

## Airport General Direction No: 1

### Parking, Speed and Traffic Restrictions

#### References:

- A. Aerodrome (Administration) (Jersey) Law 1952.
- B. Aerodrome (Jersey) Regulations 1965, Part 2, Regulation 3 (1).
- C. Aerodrome (Jersey) Regulations 1965, Part 3, Regulation 5.
- D. Aerodrome (Jersey) Regulations 1965, Part 5, Regulation 10.
- E. Motor Traffic (Taxi-cabs-General) Order 2002.

1. The following parking, speed and traffic restrictions apply within aerodrome areas administered by Ports of Jersey.

#### Parking

2. Parking is restricted as set out below,
  - a. General. General Provisions are set out in the following table.

Provision No.	Offence Description	Offence Number	Time of Restriction
	The following are prohibited		
GP – 01	Parking on a footway	(3)	Any Time
GP – 02	Parking a vehicle within a specially designated area	(5, 8, 9, 11 or 12)	Any Time
GP – 03	Parking in a position causing an obstruction	(3, 4, 6 or 7)	Any Time
GP – 04	Parking in a position likely to cause danger	(3)	Any Time
GP – 05	Parking on a hatched area	(3)	Any Time
GP – 06	Parking on a yellow line	(7)	Any Time
GP – 07	Failing to display a valid Insurance Disc	(15)	Any Time
GP – 08	Failing to display a valid disabled badge when parked in a disabled bay	(14)	Any Time

- b. Detailed parking restrictions relating to specific Aerodrome areas can be found at Annex A.

**Speed limits**

- 3. Speed limits are set as below:
  - a. **20 miles per hour** on all roads within the Aerodrome area.
  - b. **5 miles per hour** within all car park within the Aerodrome are.

**One-way traffic**

- 4. Traffic is restricted to one-way flow in the following areas:
  - a. Airport Road – One-way clockwise from opposite the 10-minute waiting area 20a (Pit Stop), westwards passed the Departures Hall, around the central taxi waiting area 40f and westwards back towards the exit junction.



Robin MacRae

Airport Director for Airport Authority

20/08/2020

**ANNEX A**
**Parking Restrictions in Specific Aerodrome Areas**

<b>Area</b>	<b>Location</b>	<b>Restriction</b>	<b>Time of Restriction</b>
<b>1) a Airport Staff Car Park</b>	East of the Airport Road, between the roundabout and the 10-minute waiting area 2) a.	Authorised staff and 3 <sup>rd</sup> parties only.	Anytime
<b>2)a Pit Stop – 10 Minute Waiting Zone</b>	Left-hand side of Airport Road, alongside wooden security fencing before the Departures Hall.	Public waiting only. Drivers must remain with their vehicles	10-minute maximum. Any time
<b>3)a Departures East Car Park</b>	East of the Departures Hall, behind the wooden security fence.	Duty Airport Vehicles, SOJP Vehicles & Authorised Contractors only.  Valid permit parking only, permits to be displayed at all times	Anytime
<b>4)a East Drop-off zone</b>	First drop-off zone between the first and second entrances to the Departures Hall	Public drop-off zone, vehicles must not remain in location once passengers have been unloaded.  Vehicles are not to be left un-attended.	Anytime
<b>4)b West Drop-off zone</b>	Second drop-off zone between the second and third entrances to the Departures Hall	Public drop-off zone, vehicles must not remain in this location once passengers have been unloaded.  Vehicles are not to be left un-attended.	Anytime
<b>4)c Taxi Queuing Lane</b>	From the third entrance to the Departures Hall up-to the 1 <sup>st</sup> yellow hatched area.	No public parking. Taxis only while waiting in line to pick-up fares.	Anytime

<b>4)d Taxi Queuing lane</b>	From the end of the 1st hatched area up to the 2 <sup>nd</sup> yellow hatched area.	A controlled taxi-cab may –  (a) Stand on a taxi rank; and (b) Pick up passengers at a taxi rank.	Anytime
<b>4)e Taxi Pick-up Area</b>	From the end of the second yellow hatched area, along the front of the Arrivals Hall up to the entrance to the “Short Stay” car park.	Use of taxi ranks – restricted taxi-cabs	Anytime
<b>4)f Taxi Overflow Parking Area</b>	Central parking area opposite Arrivals Hall	1) Except as provided by paragraph 2), a restricted taxi-cab must not –  (a) stand on a taxi rank; or (b) pick up passengers at a taxi rank  2) A restricted taxi-cab may pick up passengers at a taxi rank established at the Airport, Albert Pier or Elizabeth Harbour if no controlled taxi-cab is standing on the taxi rank.	Anytime
<b>5)a Short Stay Car Park</b>	Adjacent to the Arrivals Hall	Public Parking Area for short stay parking and arrivals pick-up.  Coach and Minibus only spaces around the left-hand perimeter of the car park  Disabled parking only spaces – disabled badge to be displayed at all times.	Anytime  -----  1 <sup>st</sup> April until 31 <sup>st</sup> October – Parking is restricted on Saturdays to coaches and minibuses only
<b>5)b Short Stay Car Park</b>	Continuation of car park between Old Hangar and Service Buildings.	Left-hand side of area for “Booked Taxis” only.  Last two spaces on left-hand reserved for valid Permit Holders only.	Anytime

		Right-hand side reserved for valid permit Holders only.	
<b>6)a Arrivals Bus Stop</b>	Outside Arrivals Hall between entrance and exit to Short Stay carpark	No public parking. Buses only	Anytime
<b>7)a Main Public Car Park</b>	Opposite Departures Hall, central area between main airport buildings	Public parking area for passengers and visitors to the airport.  Disabled parking only spaces – disabled badge to be displayed at all times.  Hire car drop-off parking for non Hertz, Avis or Europcar vehicles  No commercial vehicles or motorcycles	Anytime
<b>8)a Hertz, Avis &amp; Europcar Hire Car Area</b>	Via access slip road on first bend from main junction roundabout	No public parking. Hertz, Avis and Europcar hire cars only	Anytime
<b>9)a Motorcycle Park</b>	Via access slip road on first bend from main junction roundabout, situated on right-hand side of access road before hire car parking.	Public and staff parking for motorcycles only	Anytime
<b>9)b Approach Road to Hangar 4</b>	From junction with Airport approach road to main outer security Gate	No Parking	Anytime
<b>9)c Hangar 4 Compound</b>	The area inside the main outer security gate	Permit & Authorised Parking only	Anytime
<b>10)a La Grande Vingtaine (Le Guet) Car Park</b>	Car park north side of the Airport off La Rue De La Grande Vingtaine	Public Parking - 12 Hours in any 24	Anytime

<b>11)a Old Cargo Centre</b>	Eastern side of Airport off L’Avenue De La Reine Elizabeth	No Public parking – Authorised vehicles only	Anytime
<b>11)b Heron House</b>	South East of Airport off L’Avenue De La Reine Elizabeth	Aviation Beauport authorised parking only	Anytime
<b>11)c Heron House / Hangars</b>	South East of Airport off L’Avenue De La Reine Elizabeth	Aviation Beauport authorised parking only	Anytime
<b>12)a Cargo Centre Car Park</b>	North of access road to Cargo Centre and Fuel Farm	Cargo Centre staff and Visitors. 12 Hours in any 24	Anytime
<b>12)b Social Club Car Park</b>	North and west of the Old Airport Social Club building	<b>Numbered Bays 1 to 45 &amp; A to T : 07:00 – 19:00 Permit Holders only</b> All other times parking limited to 12 hours in any 24. ..... All other non-numbered parking areas parking limited to 12 hours in any 24.	Anytime  ..... Anytime
<b>12)c Fuel Farm Car Park</b>	West of the Fuel Farm.	All Numbered Bays – ATF &NAS & visitors during working hours: 12 hours in any 24	Anytime
<b>13) La Chasse Communications Facility</b>	In its entirety	Authorised vehicles and PoJ La Chasse permit holders only	Anytime

**Airport Parking Area Overview 1a to 9c**



**Airport Parking Area Overview 10a (Le Guet)**



**Airport Parking Area Overview 11a to 12a**



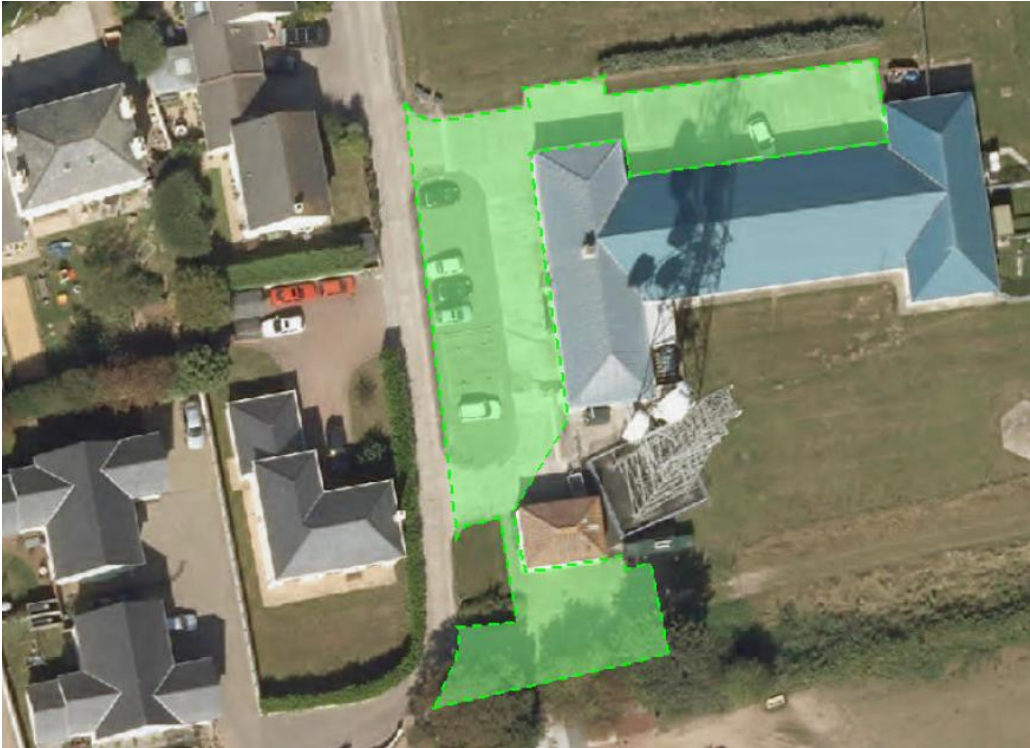


**Airport Parking Area Overview 12b & 12c**





**13) La Chasse**





**PORTS OF JERSEY**  
YOUR ISLAND GATEWAY