



CRUISE JERSEY

Cruise ships' tenders navigation guide to Albert Pier pontoons

St Helier VTS contact details:

- VHF 14
- Tel: +44 (0) 1534 447722.

Jersey Coastguards contact details:

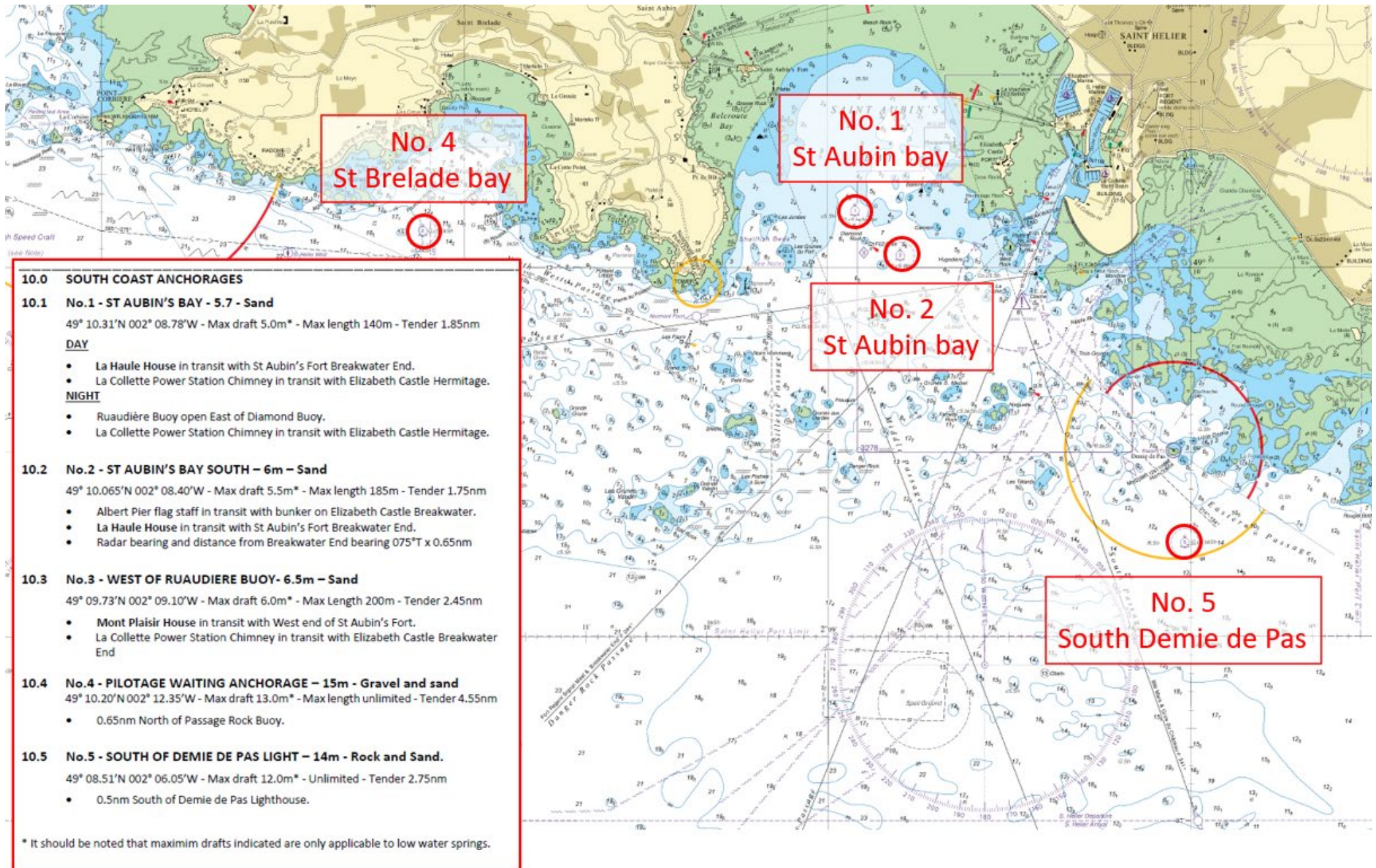
- VHF 82
- Tel: +44 (0) 1534 447705

Emergency contact details:

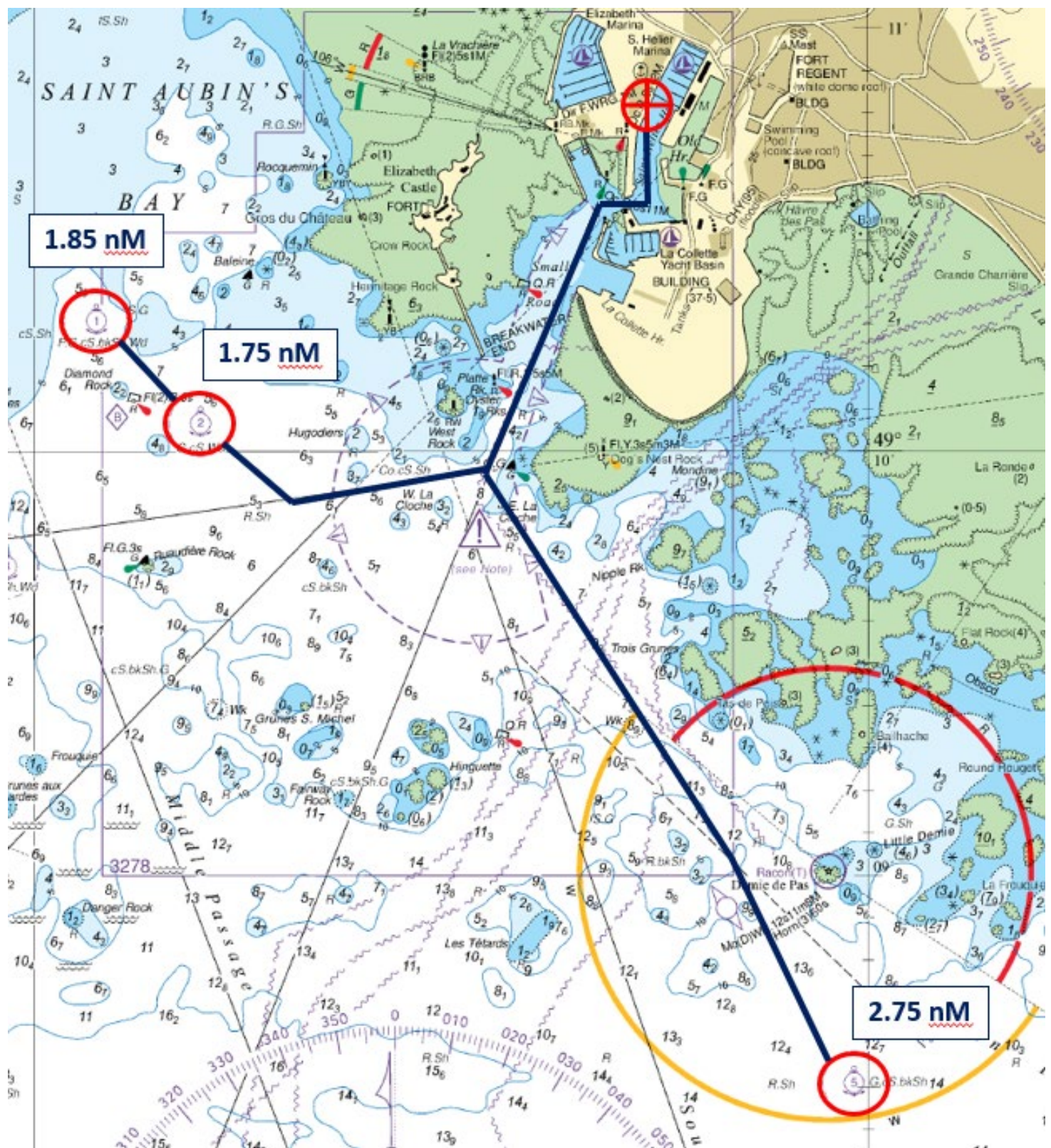
- VHF 16
- Tel: 999

Page intentionally left blank

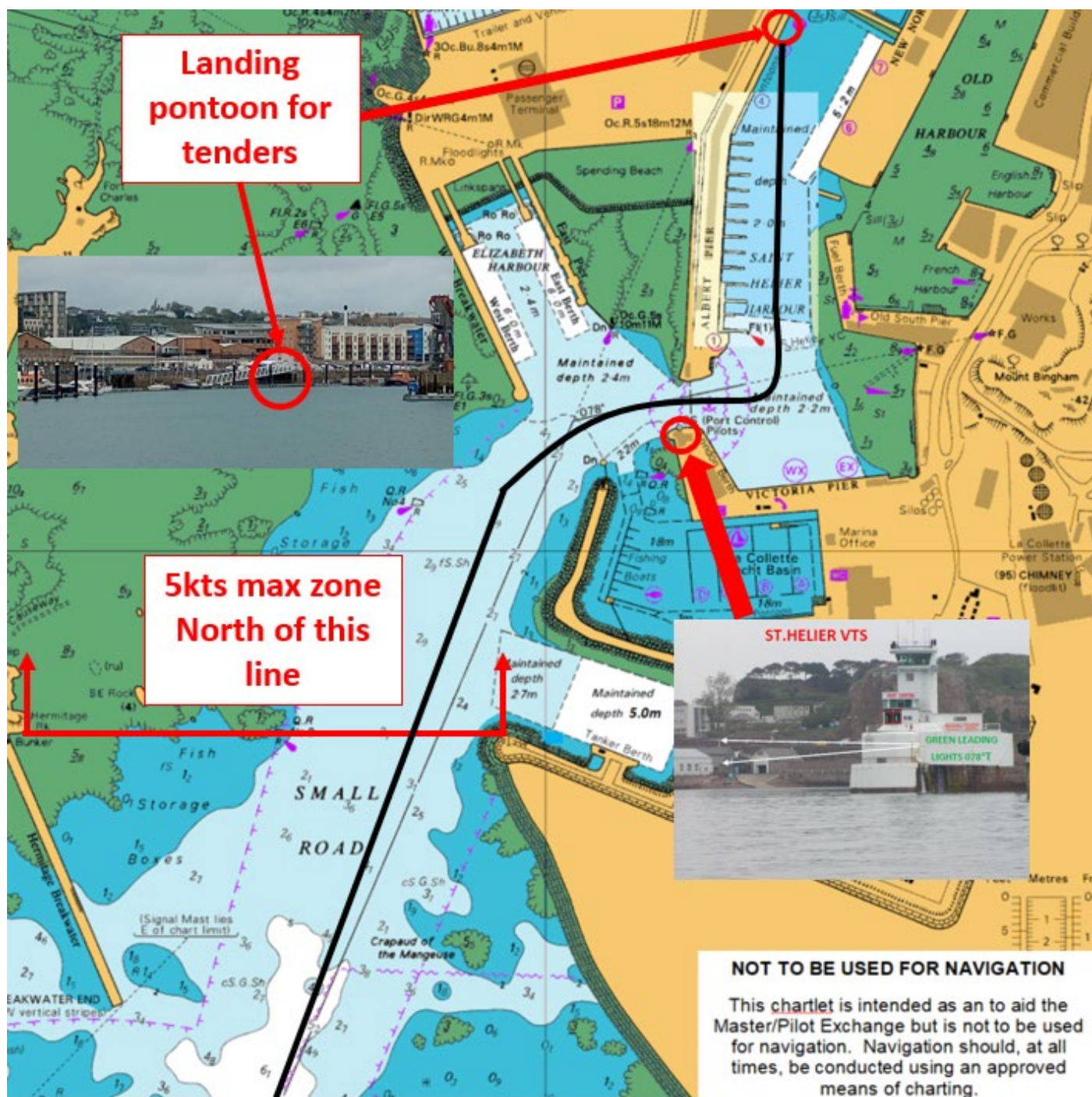
Jersey South coast anchorages

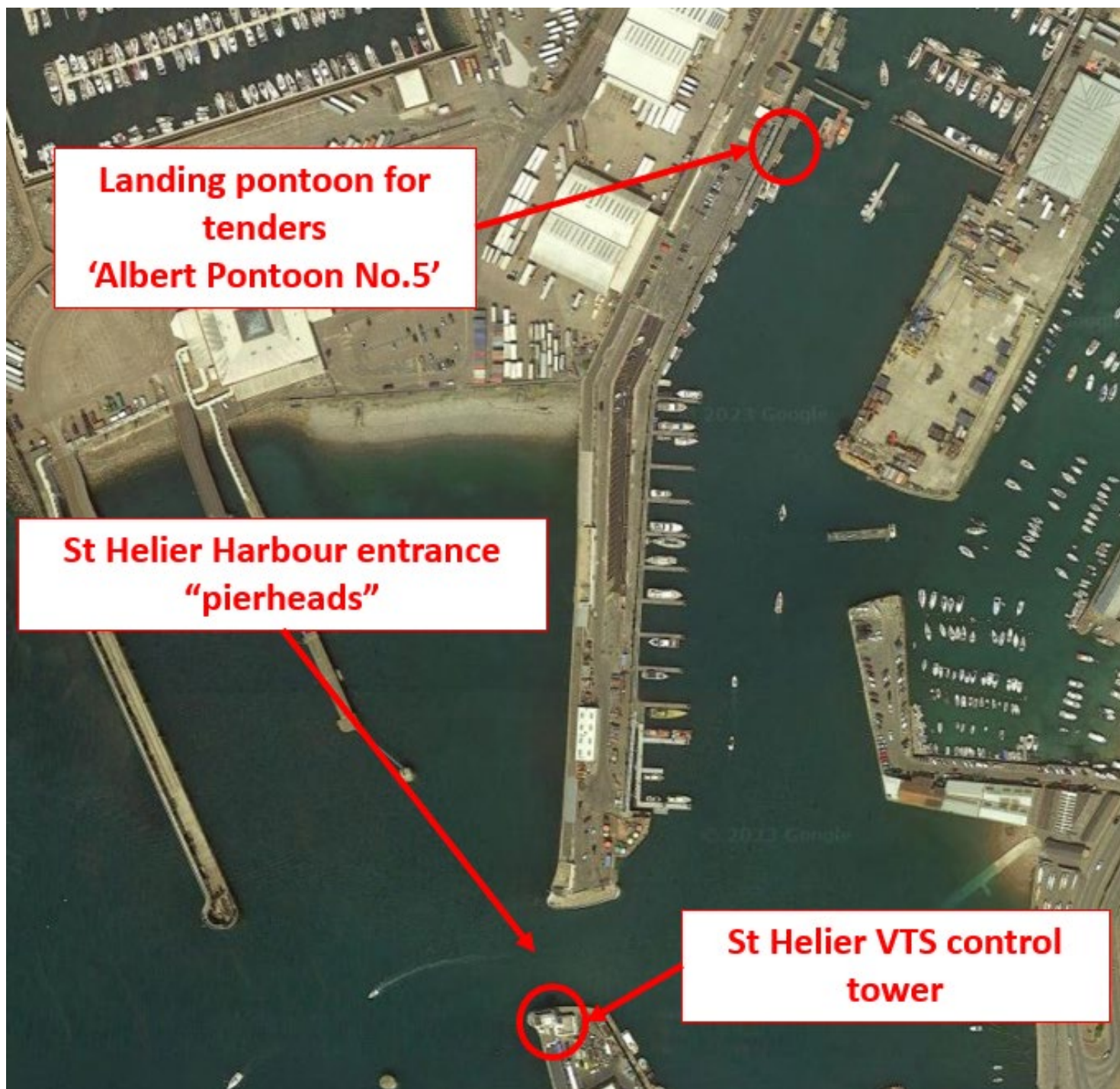


Tenders routes from anchorages No.1, No.2 & No.5 to tenders landing pontoons with associated route length



Harbour entry / exit route for cruise ships' tenders





**Landing pontoon for
tenders
'Albert Pontoon No.5'**

**St Helier Harbour entrance
"pierheads"**

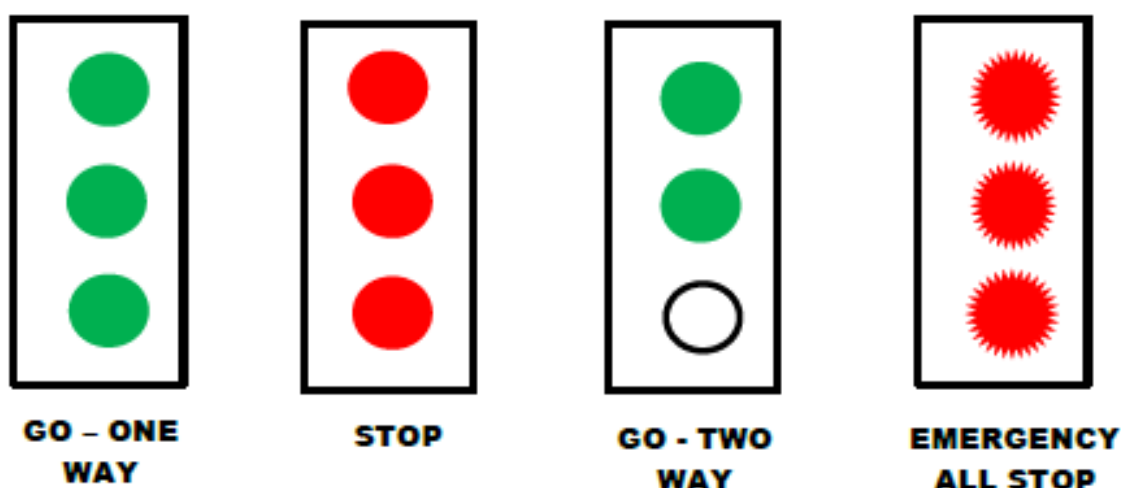
**St Helier VTS control
tower**



Harbour entry / exit IALA light signals procedure

Before entering or leaving the port, or shifting berth within the port, Masters of vessels must obtain prior permission from St. Helier VTS on VHF Channel 14.

In addition there are four sets of IALA Traffic signal lights. Three sets are mounted on VTS Tower facing Elizabeth Harbour, Small Road, and the Main Harbour to control small craft movements. There is an additional set facing into La Collette Yacht Basin. In 2016 additional repeater units were mounted facing NW and SW on the end of Elizabeth West wall. They mimic those on the VTS Tower but can be operated independently if necessary.



In addition, the Master (or Officer in charge of the watch) should inform St Helier VTS on VHF Channel 14 of the commencement and finishing of tendering operations and should keep St Helier VTS up to date, on VHF Channel 14, as to how many tenders are operating at any point in time.