



CRUISE JERSEY

Cruise ships' tenders navigation guide to La Colette marina pontoons

St Helier VTS contact details:

- VHF 14
- Tel: +44 (0) 1534 447722.

Jersey Coastguards contact details:

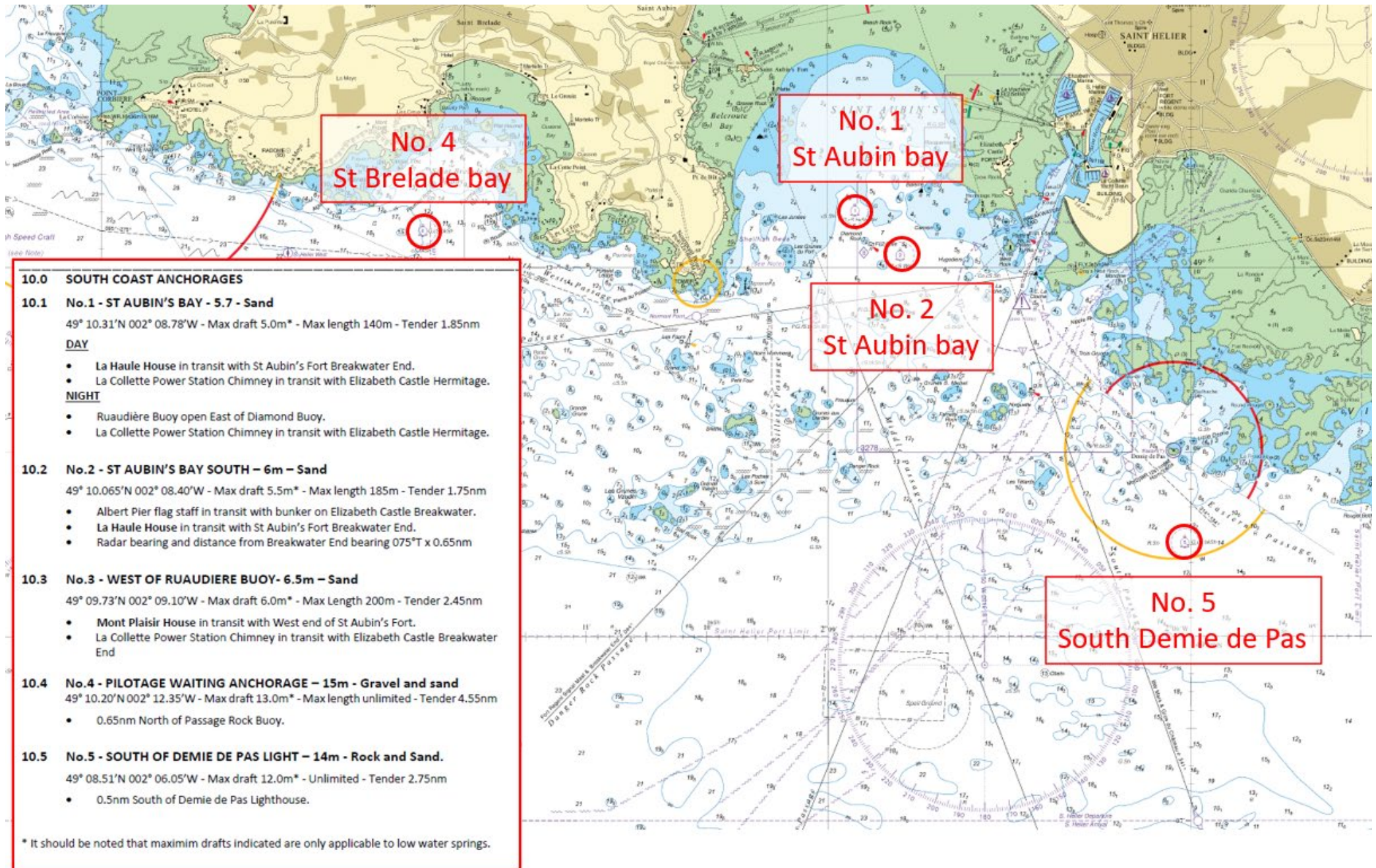
- VHF 82
- Tel: +44 (0) 1534 447705

Emergency contact details:

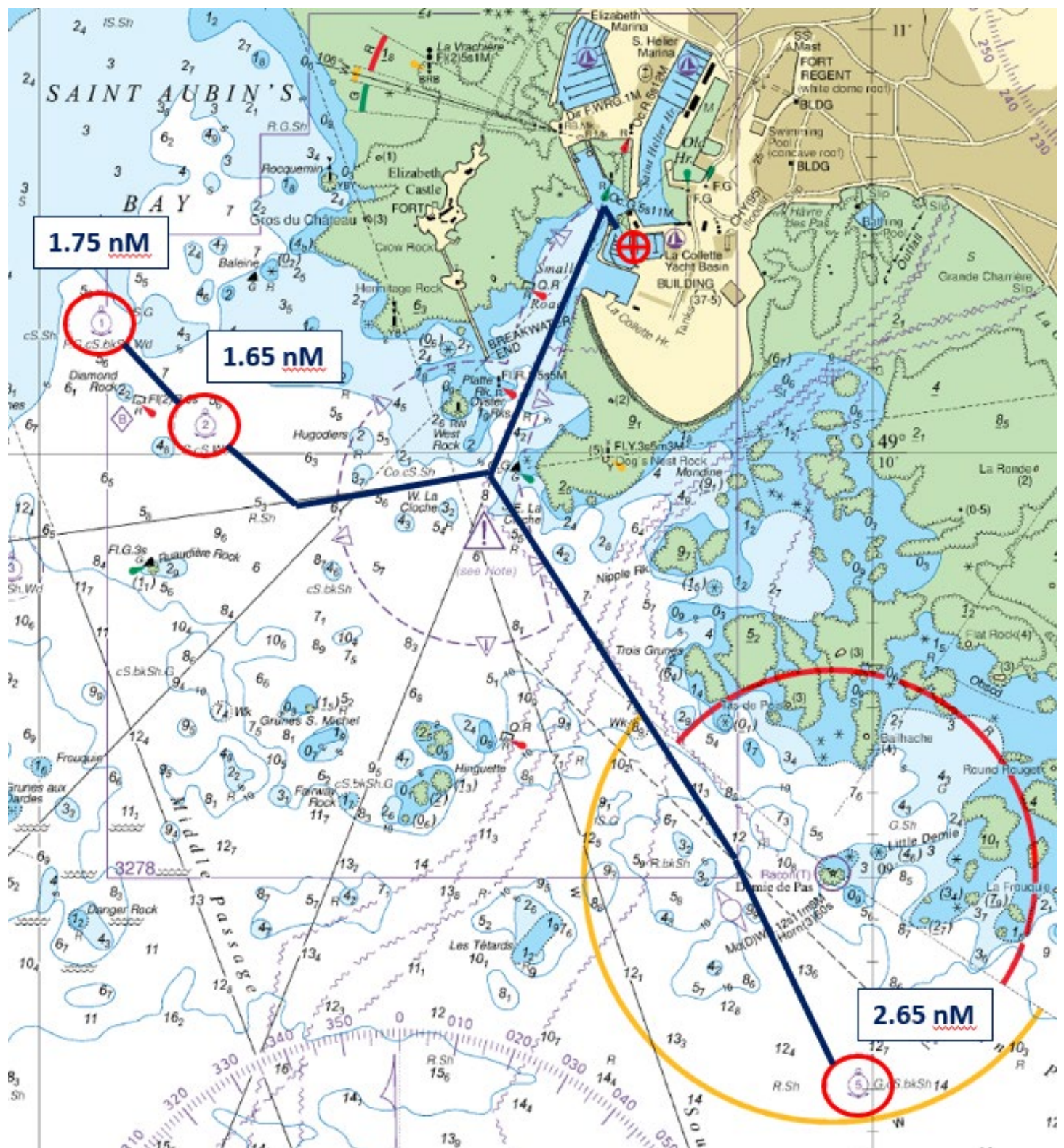
- VHF 16
- Tel: 999

Page intentionally left blank

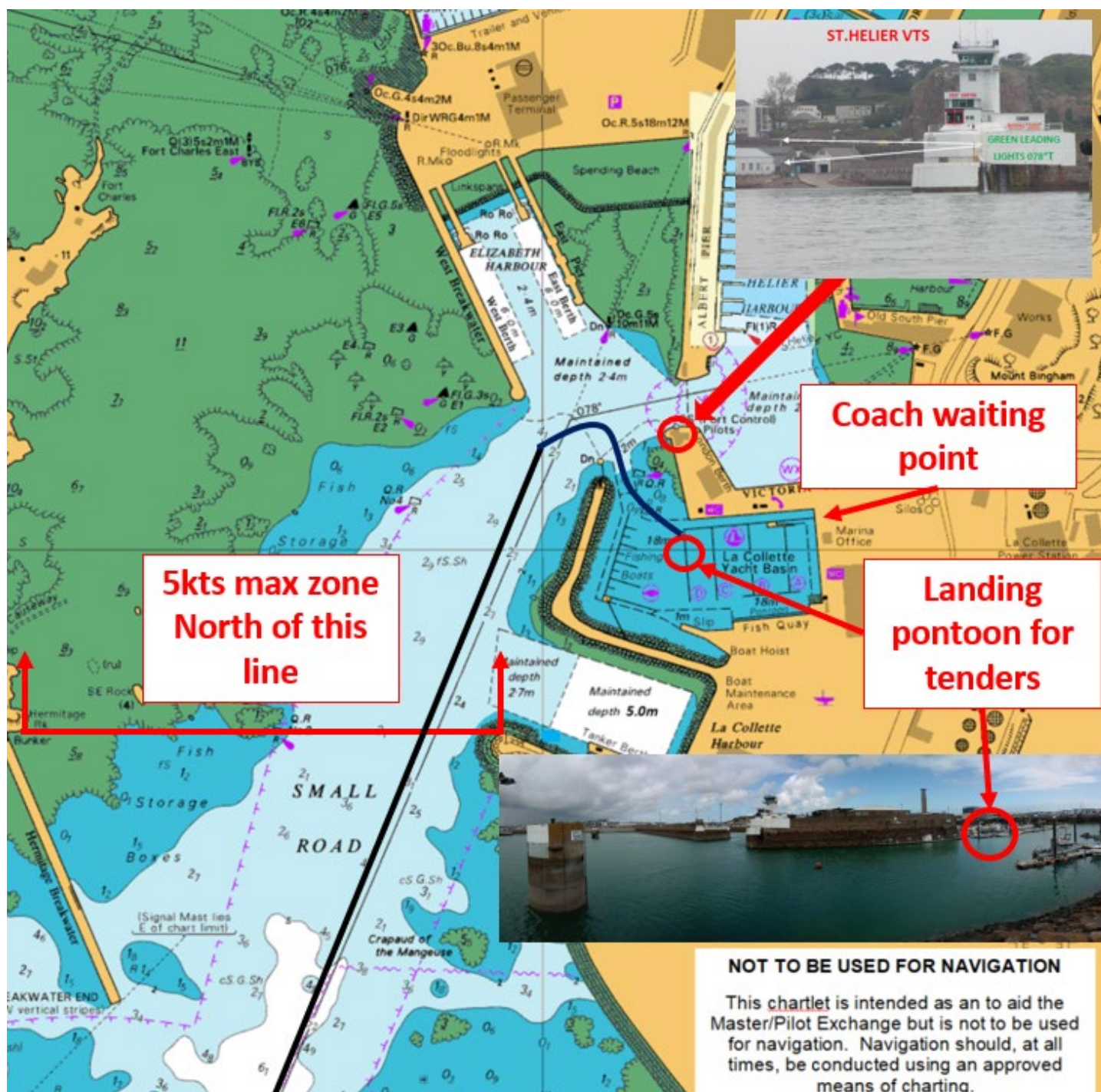
Jersey South coast anchorages



Tenders routes from anchorages No.1, No.2 & No.5 to tenders landing pontoon with associated route length



La Colette marina entry / exit route for cruise ships' tenders





St Helier VTS control tower

This is an aerial photograph of the harbor in St Helier, Jersey. The image shows various maritime infrastructure. A red line points from the label 'St Helier VTS control tower' to a small white building on a pier at the top center. Another red line points from 'La Colette Marina entrance' to a gap in the harbor wall on the left. A third red line points from 'La Colette dolphin' to a small circular structure in the water. A fourth red line points from 'Landing pontoon for tenders' to a long pier with many small boats at the bottom. A fifth red line points from 'Coach waiting point' to a spot on the quay on the right, which is also circled in red. The harbor is filled with numerous boats, mostly small tenders and yachts, moored in rows. The water is a dark blue-grey color. The sky is not visible. The image has a '© 2023 Google' watermark in several places.

La Colette Marina entrance

Coach waiting
point

La Colette dolphin

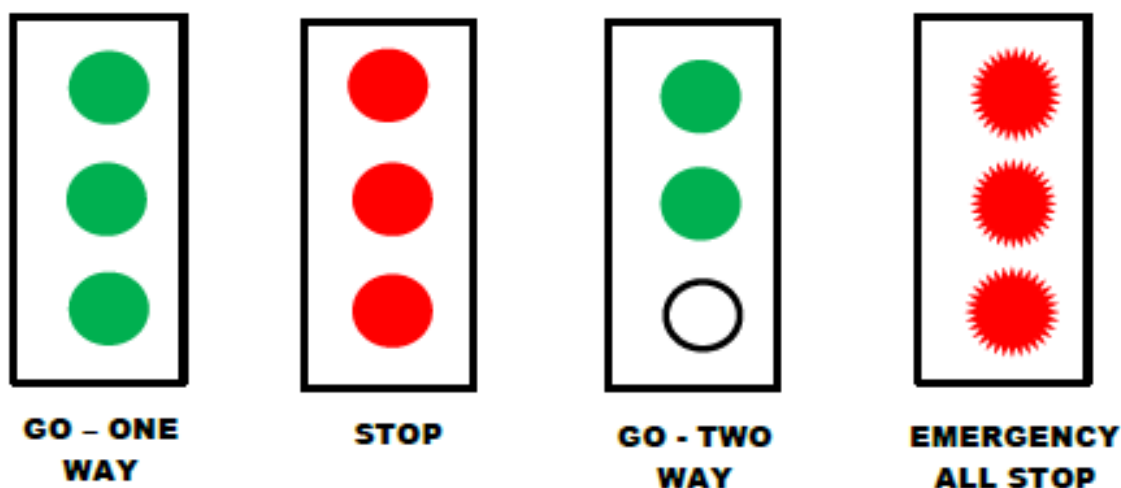
Landing pontoon
for tenders



Harbour entry / exit IALA light signals procedure

Before entering or leaving the port, or shifting berth within the port, Masters of vessels must obtain prior permission from St.Helier VTS on VHF Channel 14.

In addition there are four sets of IALA Traffic signal lights. Three sets are mounted on VTS Tower facing Elizabeth Harbour, Small Road, and the Main Harbour to control small craft movements. There is an additional set facing into La Collette Yacht Basin. In 2016 additional repeater units were mounted facing NW and SW on the end of Elizabeth West wall. They mimic those on the VTS Tower but can be operated independently if necessary.



In addition, the Master (or Officer in charge of the watch) should inform St Helier VTS on VHF Channel 14 of the commencement and finishing of tendering operations and should keep St Helier VTS up to date, on VHF Channel 14, as to how many tenders are operating at any point in time.