



CRUISE  
JERSEY

# Cruise Operators Guide to Jersey

49° 15' 25.3"N, 2° 13' 49.3" W







## JERSEY - THE PERFECT PORT OF CALL

Ports of Jersey is delighted to welcome cruise ships to its shores.

With our breadth of experience and knowledge, we can offer both ships and their passengers a range of first-class services and an unforgettable escape.

Jersey offers exceptional visitor appeal. Cruise guests will be spoilt for choice for things to do; from visiting world-famous tourist attractions,

exploring exquisite beaches and historic castles to fine dining at Michelin star restaurants or shopping in designer boutiques.

You are welcome to contact us to find out more about Jersey as a cruise destination and may I encourage you to consider Jersey as a stopover port for your cruise itineraries.



"The tiny jewel that is Jersey, with its unique blend of French and English heritage, has long proved a magnet to travellers."

Measuring just nine miles by five miles, Jersey is the perfect location for a day trip - somewhere a little way apart, a little bit different, ever so slightly exotic. A place where you can experience the unique character of land, coast, beach and sea. Small in square miles but big in places to go and things to see, it's a perfect size to explore with a few hours to spare.

Jersey is shaped by the sea where some of the most astonishing tides in the world circle the coast. The coastline is varied, with majestic cliffs and exposed bays towards the north, sloping down to wide sandy beaches and rocky coves in the south.

Jersey's unique history has been molded over time by Ice Age visitors, occupying forces, languages and local traditions. You can experience major historical sites, some dating back thousands of years, which are now open to the visiting public. From World War II bunkers to ancient burial grounds, museums, castles and caves. Jersey is there waiting to be discovered.







# DESTINATION OPPORTUNITIES

Jersey's **beaches** have won multiple awards and are some of the cleanest in Britain. For long stretches of yellow sand try St Ouen or St Brelade's Bay, which have sweeping views and a good range of activities that normally attract families.

Enjoy Jersey up close with a range of **walking** options. From hikes along the cliff paths to strolls along peaceful wooded valleys and country lanes, there's a whole network of routes across the Island.

If you prefer two wheels, Jersey's many 'green lanes' ensure motorists travel at less than 15 miles an hour, keeping you safe to **cycle** around and enjoy the spectacular scenery.

Awash with history, Jersey is proud of its unique **heritage**. There are a number of castles and forts to explore, as well as museums, keen to share stories of our past.

You can also explore the island to find evidence of German fortifications, dotted around the coast, as a reminder of the Occupation of the Island during World War II.

If time permits, a visit to the world-renowned **Jersey Zoo** is a must. A 32-acre parkland, it is home to over 130 endangered animals, founded by the late author and naturalist, Gerald Durrell.





Your taste buds are in for a real treat with an abundance of **culinary delights** just waiting for you. From Michelin-star restaurants to charming beachside food shacks, al fresco dining overlooking stunning sweeping bays, to intimate settings for romantic escapes, Jersey prides itself on its array of restaurants, cafes and bars. Seafood is particularly abundant and don't forget to try our Jersey Royals in the summer!

From bespoke boutiques to well-known high street stores, locally produced artisan crafts to designer outlets, Jersey is a **shopper's paradise**. The pedestrianised town centre in St Helier is within easy walking distance from Albert Pier. Outside of St Helier you'll discover some of Jersey's specialist shops and boutiques, including exclusive jewellers and even our own vineyard and distillery.

Cruise Jersey is able to organise **bespoke tours** of the Island for your guests, to enable them to experience the unique character of the land, coast, beach and sea.

Whether your guests would like to discover our history, tour some of our must-see places, or just sit back and enjoy our spectacular sights, we can organise this for you. There are also multi-language tours available.

### Tour providers

#### Signature Coaches

T: +44 (0) 7797 789123

E: [info@signature.je](mailto:info@signature.je)

W: [signature.je](http://signature.je)

#### Tantivy Blue Coaches

T: +44 (0) 1534 706706

E: [info@jerseycoaches.co.uk](mailto:info@jerseycoaches.co.uk)

W: [tantivybluecoach.com](http://tantivybluecoach.com)

#### Waverley Coaches

T: +44 (0) 1534 758360

E: [tours@waverleycoaches.co.uk](mailto:tours@waverleycoaches.co.uk)

W: [waverleycoaches.co.uk](http://waverleycoaches.co.uk)





# WHY JERSEY?

From beautiful beach walks and green lanes for cyclists, memorable food experiences overlooking the sea, history on your doorsteps and heritage sites to seek out, your cruise guests will be able to live Jersey's island life to the full.



**'Superman',  
Henry Cavill was  
born in Jersey**

## Five reasons why Jersey is the perfect port of call

- 1.** Jersey is the sunniest place in the British Isles, with temperatures normally a few degrees warmer than mainland Britain
- 2.** Just nine miles by five miles, Jersey's size makes it the perfect for a day trip
- 3.** With one of the largest tidal ranges in the world, the island doubles in size twice a day
- 4.** The Island is ideally placed for port-of-call visits for European and UK cruise itineraries
- 5.** Jersey is a boutique destination for small to medium sized ship cruises



**You're never  
more than ten  
minutes from  
the sea**



**Our beautiful  
cows are famous  
for their rich and  
creamy milk**



# EVENTS

Jersey has a busy calendar of events to keep locals and visitors entertained all year round. Here are just a few highlights.

The Channel Islands were the only part of the British Isles to be occupied by German forces in WW2. The five-year occupation came to an end on 9 May 1945 - **Liberation Day**, an event still celebrated in Jersey with an annual Bank Holiday.

**Barclays Jersey Boat Show** takes place over the May Day bank holiday. Over three days, Jersey's largest free event showcases our marine leisure as well as enabling the thousands who attend to enjoy delicious food and great entertainment.



The **Battle of Flowers** is one of the largest floral carnivals in Europe. The festival consists of music, funfairs, dancers, majorettes and a parade of flower floats alongside various street entertainers.

Very little can rival the variety, spectacle and energy of the **International Air Display**. One of our premier calendar dates, (all schools are shut for the day) it takes place on the second Thursday in September.

In September, dragon boats take to the water of Albert Pier in the annual **Dragon Boat Festival**. Teams in fancy dress battle it out to be crowned champions.





# SHIP SERVICES





**Jersey is located in the northern part of the Bay of St Malo, some forty miles south of the main English Channel shipping lanes and only twelve miles off the Contentin Peninsula. St Helier Harbour is situated on the Island's south coast, at the eastern end of St Aubin's Bay.**

There are deep water anchorages to the north east of the Island, off St Catherine's Breakwater and in Bouley Bay although preferred anchorages are in the Southern part of St Aubin's Bay and off the Demie de Pas Lighthouse for vessels more than 185m or 6m draught. Manoeuvring ability, size, draft of the vessel and weather conditions are considered when deciding the anchorage position.

Ports of Jersey is responsible for the Island's ports (including airport and historic harbours), coastline, navigational marks and territorial waters within a twelve mile limit.





## Port Information

St Helier Harbour, the only commercial port for Ro-Ro services and the loading and discharge of freight, is situated on the south coast of the Island. Rocks, shallows and outcrops abound in the narrow approaches to the harbour. Combined with a spring range of tides in excess of twelve metres, a mariner inexperienced in Channel Islands waters is required to navigate with extreme caution.

The approaches to St Helier are explained in the CI Pilot (NP 27) and Admiralty Charts 3677, 1137 and 3278.

## Pilotage

Pilotage is compulsory for vessels of 35m and over in length. Pilots will usually board off La Moye Point in the North West Passage or South of Demie de Pas Lighthouse for the Eastern and Southern Passages. The pilots will require 24 hours advance notice via the vessel's local ground agent and a further one hour's advance notice of the vessel's ETA via Jersey Coastguard.

Pilotage services are provided by Ports of Jersey and can be contacted on +44 (0) 1534 447705.





## Entry

Entry to the harbour is controlled by St Helier VTS. The period of entry may be restricted due to tidal limitations and the vessel's draught.

## Anchorage

Vessels visiting Jersey may anchor in St Aubin's Bay, in the approaches to St Helier Harbour off the Demie de Pas Lighthouse on the South East coast or off St Catherine's Breakwater on the North East coast of the Island. St Aubin's bay anchorage is limited to vessels of maximum length 185m, subject to draught. Tenders will land passengers arriving into St Helier on the Albert Pier Pontoon. Larger vessels with a draught in excess of 5.5m can anchor off the Demie de Pas Lighthouse.

For vessels anchoring in St Catherine's Bay, tenders will land passengers, subject to weather conditions, on the South side at the root of the Breakwater. This is suitable for RIB type tenders only.

## Communication

Jersey Coastguard, the local coast radio station, maintains a continuous listening watch on VHF Channels 16 and 82.

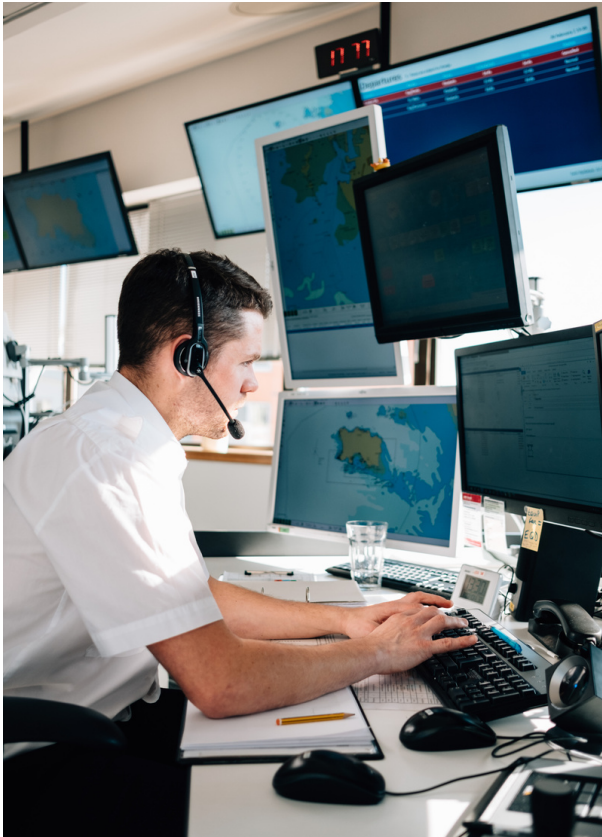
Vessels arriving into St Helier must advise Jersey Coastguard (MMSI 002320060) of its ETA at the pilot station and confirm again when one hour off.

Local navigation warnings and weather conditions for the Channel Islands are broadcast regularly. St Helier VTS maintains a continuous watch on VHF Channel 14 only.





# AT YOUR SERVICE



## **Banking**

Most leading banks have branches in St Helier.

## **Communication**

Pilots will require 24 hours advance notice via the vessel's local port agent and a further one hour's advance notice of the vessel's ETA at the pilot station via Jersey Coastguard. One hour's advance notice is also required for vessels needing the assistance of the tug.

## **Customs and Immigration**

Maritime House  
La Route du Port Elizabeth  
St Helier JE1 1JD

T: +44 (0) 1534 448000

E: [customs@gov.je](mailto:customs@gov.je)

E: [immigration@gov.je](mailto:immigration@gov.je)

## **Docking facilities and minor repairs**

There are no dry-docking facilities available for ships. However, minor repairs can be undertaken, arranged by the vessel's local port agent.

## **Documentation**

ISPS declaration, two copies of the crew list, passenger list, cargo manifest, crew declarations, bills of landing/consignment notes and stores list.





## Flags

The courtesy flag is the Red Ensign or the Jersey Ensign. St Helier Harbour is open 24 hours a day and normal working hours for vessels are 06:00 to 23:00.

## General Hospital

Gloucester Street

St Helier JE1 3QS

T: +44 (0) 1534 442000 (all departments)

For emergencies, dial 999

## Health regulations

Rabies prevention regulations prohibit the landing of any animal, except when landed by an authorised carrier.

## Jersey Airport

Located approximately four miles from St Helier Harbour on the western side of the Island, Jersey Airport provides a comprehensive year-round network of air routes in and out of the Island.

T: +44 (0) 1534 446000

E: [customerrelations@ports.je](mailto:customerrelations@ports.je)

W: [jerseyairport.com](http://jerseyairport.com)

## Licensed line handlers

The licensed line handlers will attend all commercial vessels on request and can be booked via the local port agent. Ports of Jersey has an 8.25m 90hp 1 tonne bollard pull work boat available to assist the manoeuvring of vessels in St Helier Harbour.

## Medical facilities

Jersey has a reciprocal health agreement with the UK, which means that British visitors will be entitled to emergency care and hospital treatment. There are many private medical practices in the Island for which a fee must be paid. Anyone visiting Jersey is recommended to have adequate travel and health insurance.

## Pilotage

Contact Jersey Coastguard

T: +44 (0) 1534 447705

E: [jerseycoastguard@orts.je](mailto:jerseycoastguard@orts.je)

R: VHF Chanel 82

## Port Bunkering Services

Gas oil is available by road tanker only. All lube oils are available by prior arrangement, with the vessel's local port agent.

Channel Islands Fuel Services

T: +44 (0) 1534 725927

Fuel Supplies (Rubis)

T: +44 (0) 1534 709800

## Public Holidays

Jersey marks annual Public Holidays in line with England and Wales with an additional day on 9 May to celebrate Liberation Day.

## Port agents

Allied Coasters Ltd

T: +44 (0) 1481 713723

E: [agency@alliedcoastersltd.com](mailto:agency@alliedcoastersltd.com)

W: [alderneyshipping.com](http://alderneyshipping.com)



### **St Helier Port Services**

T: +44 (0) 1534 870300

E [admin@sthelierportservices.com](mailto:admin@sthelierportservices.com)

### **Solent Stevedores**

T: +44 (0) 2380 725 790

W: [solentstevedores.com](http://solentstevedores.com)

### **Sustainability**

Ports of Jersey recognise we have an important role in promoting a positive environmental culture and protecting the ecosystem.

### **Tourist Information**

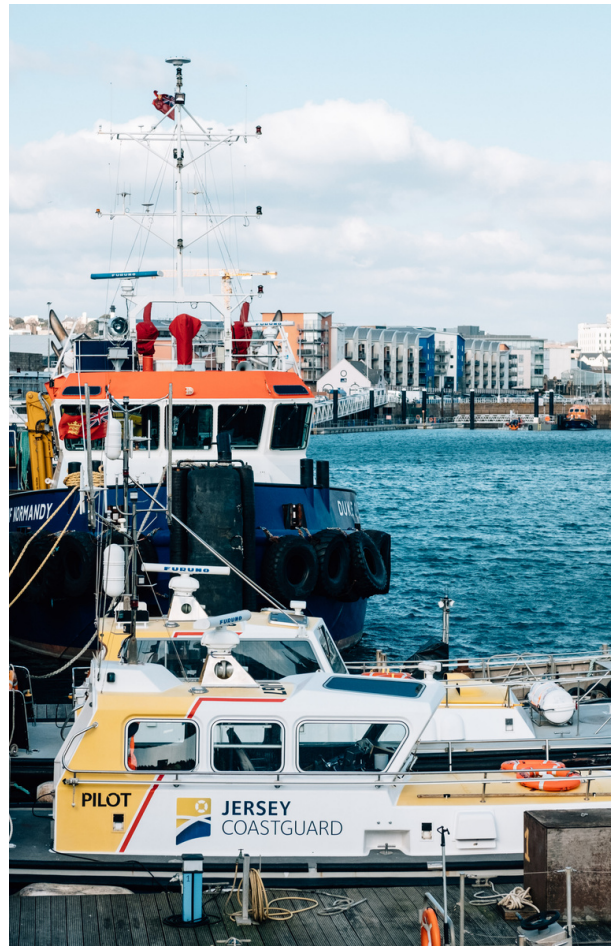
W: [jersey.com](http://jersey.com)

T: +44 (0) 1534 859000

E: [info@jersey.com](mailto:info@jersey.com)

### **Water**

Water is available at all working berths at a rate of approx. 20 tonnes/hour. Supply is by Jersey Water and this can be arranged by the vessel's local port agent.

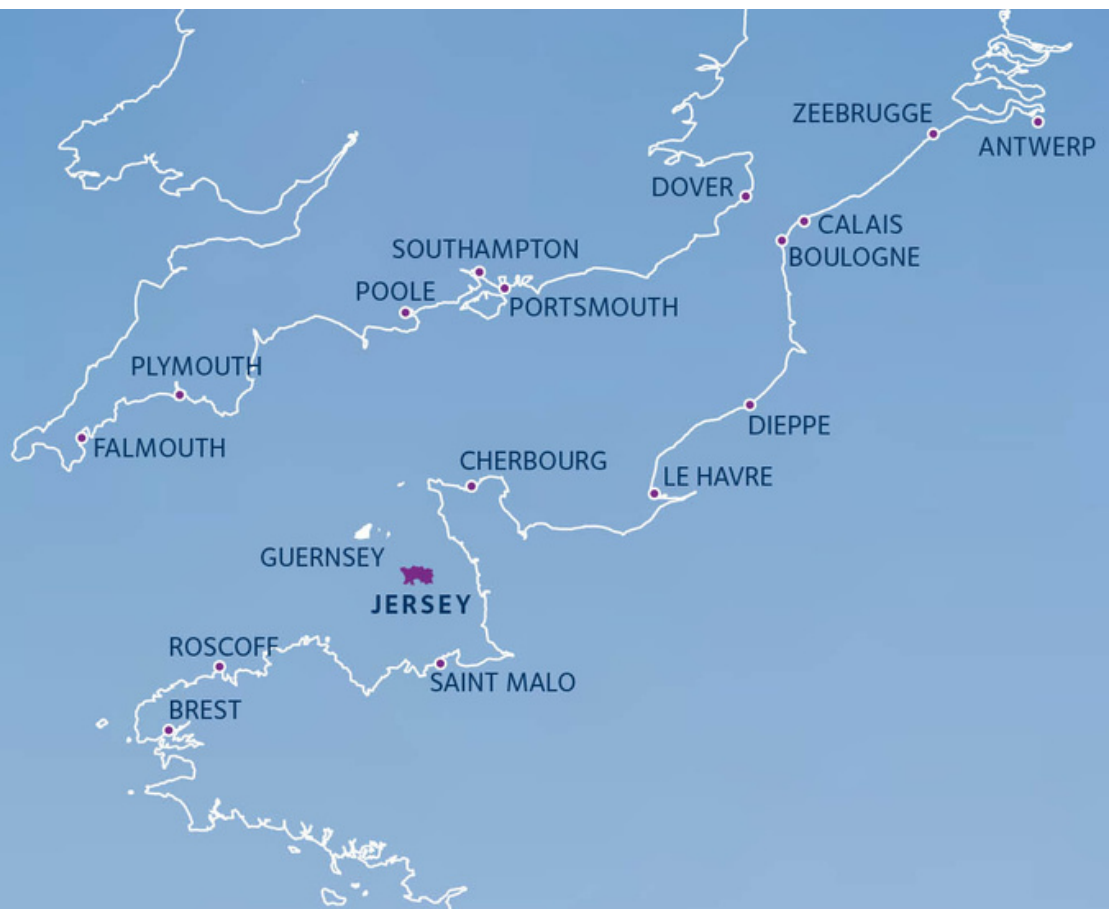




# Jersey - en route

## DISTANCES FROM JERSEY NAUTICAL MILES

325	Antwerp
195	Boulogne
210	Brest via Ouessant TSS
219	Calais
60	Cherbourg
166	Dieppe
203	Dover
129	Falmouth
132	Le Havre
108	Plymouth
101	Poole
121	Portsmouth
80	Roscoff
124	Southampton via Needles
37	St Malo via NE Minquiers
274	Zeebrugge



**To arrange a stopover at Jersey  
please contact**

**Cruise Jersey, Maritime House,  
St Helier, Jersey  
JE1 1HB**

**[jerseyharbours@ports.je](mailto:jerseyharbours@ports.je)**





## **Cruise Jersey**

Maritime House  
St Helier, Jersey  
JE1 1HB



**CRUISE  
JERSEY**