

## General Direction No: 14<sup>1</sup>

### Navigation within St Helier Harbour approaches

References:

- A. GD 8 – Harbour Limits 2018 revision
- B. International Regulations for Preventing Collisions at Sea 1972 (as amended) (COLREGs)
- C. Charts British Admiralty (BA) 1137 and 3278

#### **PART A – GENERAL PROVISIONS**

1. Leisure vessels should, as far as is reasonable and practicable, keep clear of commercial vessels approaching or departing St Helier on the recognised approach channels and in the precautionary area as marked on the BA Charts.
2. For the purposes of the COLREGS (Reference B) Rule 9, the channel marked on Chart 3278 inshore of the East Rock Buoy including the Small Road is designated as a “Narrow Channel”. Larger vessels navigating within Saint Helier Port Limits should be similarly considered to be navigating in narrow channels. Attention is specifically drawn to Rule 9 (a) requiring a vessel to keep as near to the outer limit of the channel or fairway which lies on her starboard side as is safe and practicable and Rule 9 (b) requiring a vessel of less than 20m or a sailing vessel not to impede<sup>2</sup> the passage of a vessel which can safely navigate only within a narrow channel.
3. Vessels under sail navigating inshore of the East Rock Buoy fitted with a working engine are, if unable to otherwise comply with the requirements of Rules 9 (a) and (b) as identified above, to use motor power to navigate through this channel.
4. Vessels under sail navigating inshore of the East Rock Buoy **not** fitted with a working engine are, if unable to otherwise comply with the requirements of Rules 9 (a) and (b) as identified above, to call St Helier VTS on VHF channel 14 before entering the Precautionary Area to advise VTS of their limitations and to seek guidance and/or assistance as required.
5. Sailing events are not exempt from the requirements above. Race organisers are to ensure that, during the course of a race, sailing vessels impeding the passage of any vessel considered navigating in a “narrow channel fairway” as per the above points obtains no advantage in doing so. Race organisers are to be aware that Saint Helier VTS may require a race start to be rescheduled or delayed due to commercial vessels movements. Participants in yacht races are to be advised that such participation grant them no special consideration in respect of the application of the COLREGs and breach of COLREGs is an offence under the Shipping (Distress Signals and Prevention of Collisions) (Jersey) Order 2004 and the Harbours (Inshore Safety) (Jersey) Regulations 2012.

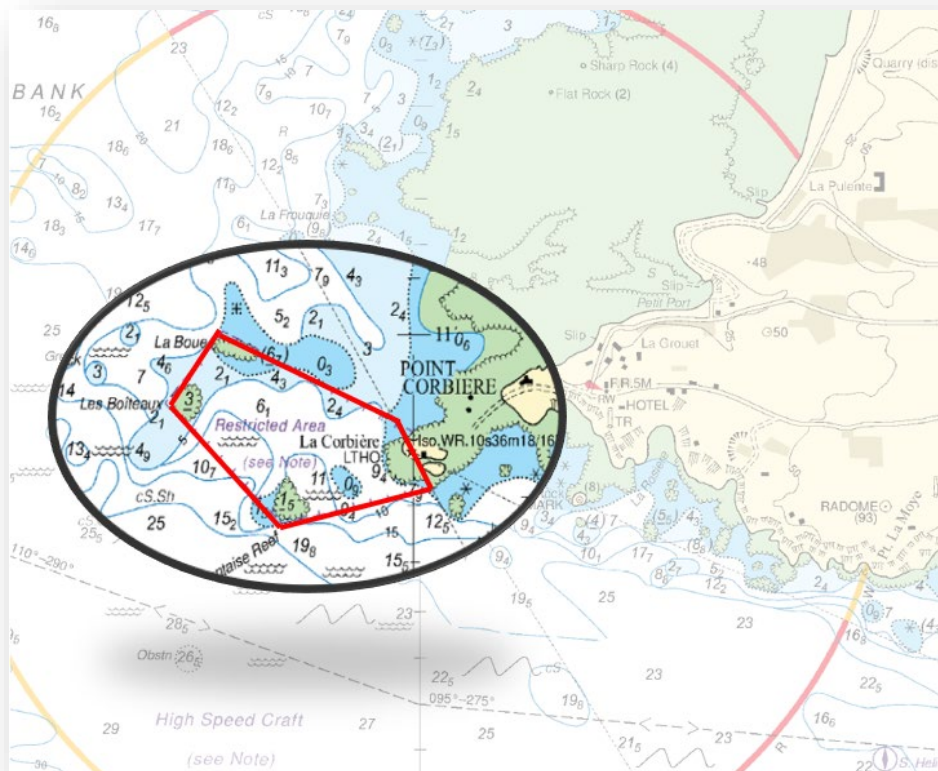
---

<sup>1</sup> This General Direction is issued under the authority of the Harbours (Jersey) Regulations 1962 – Regulations 3.

<sup>2</sup> Impeding safe passage means, the conduct by the vessel ‘required not to impede’ causes the vessel ‘not to be impeded’ to take action that it would otherwise not have taken or preventing it from taking any action that it would otherwise have taken.

## PART B – CORBIÈRE, BRETT AND ELIZABETH BREAKWATER PASSAGES

- ❖ **Corbière passage:** between La Corbière lighthouse and the outlying reefs consisting of La Boue, Les Boîteaux and Noirmontaise Reef



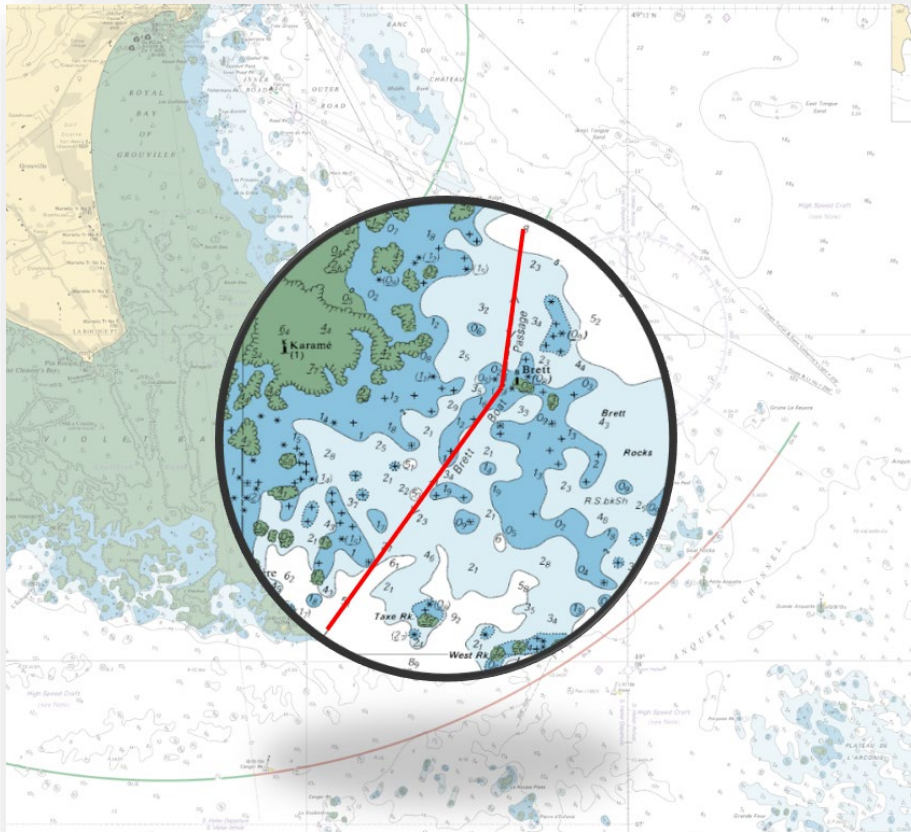
Pleasure and commercial vessels over 25m load line length (LLL) are prohibited from entering the charted restricted area at the Corbière passage.

Commercial vessels under 25m LLL which are passenger vessels (i.e. carrying more than 12 passengers) or certified to operate under the HS-OSC code are prohibited from entering the charted restricted area at the Corbière passage.

Commercial vessels under 25m LLL, other than those as specified in the paragraph above, are permitted to enter the charted restricted area at the Corbière passage providing that they have carried out a full navigational risk assessment in relation to transiting through the passage.

Pleasure vessels under 25m LLL are permitted to enter the charted restricted area at the Corbière passage however, extreme caution must be observed whilst transiting through the passage.

❖ **Brett passage: between Karamé beacon and Brett beacon**



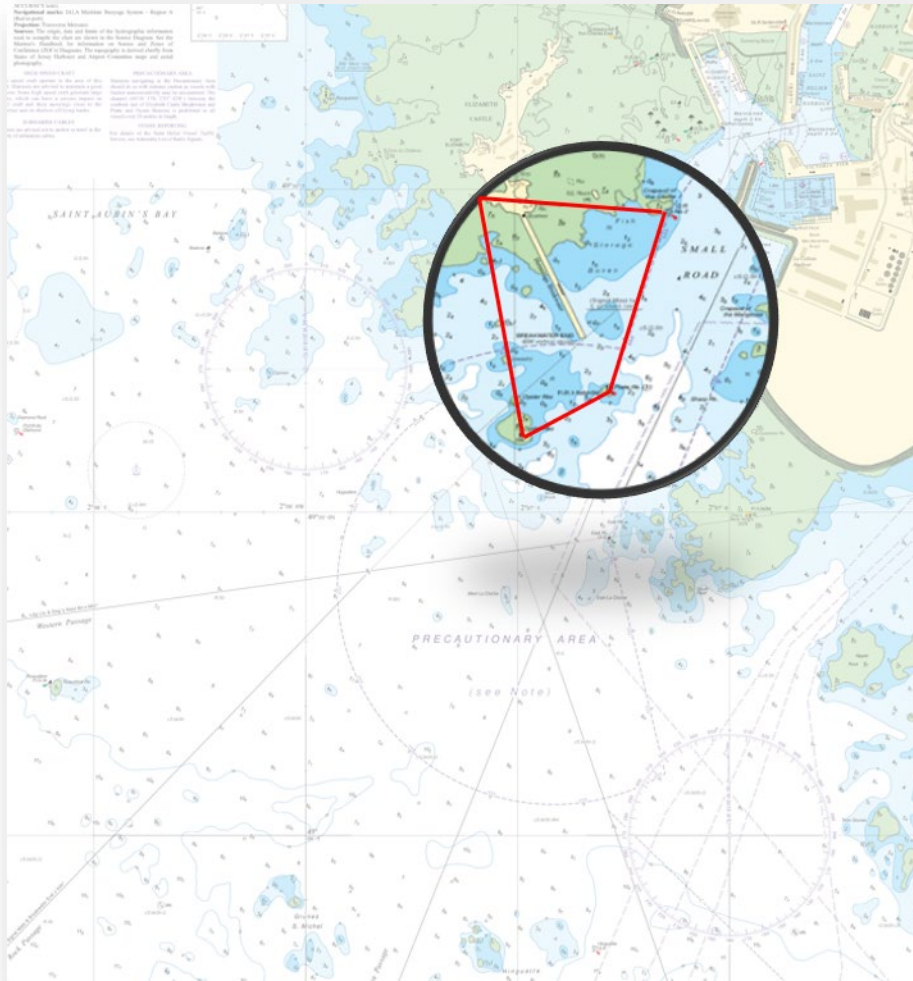
Pleasure and commercial vessels over 25m load line length (LLL) are prohibited from using the Brett passage unless specifically authorised by the Harbour Master.

Commercial vessels under 25m LLL which are passenger vessels (i.e. carrying more than 12 passengers) or certified to operate under the HS-OSC code are prohibited from using this passage.

Commercial vessels under 25m LLL, other than those as specified in the paragraph above, are permitted to use the Brett passage providing that they have carried out a full navigational risk assessment in relation to transiting through the passage.

Pleasure vessels under 25m LLL are permitted to use the Brett passage however, extreme caution must be observed whilst transiting through the passage.

- ❖ **Elizabeth breakwater passage:** An area bounded by L'Hermitage Rock, the Crapaud of the Castle (No.2 Buoy), the Platte Rock Beacon, the Oyster Rocks beacon and the charted western edge of L'Hermitage Rock



Pleasure and commercial vessels over 25m load line length (LLL) are prohibited from using the Elizabeth breakwater passage.

Commercial vessels under 25m LLL are permitted to use the Elizabeth breakwater passage providing that:

- They have carried out a full navigational risk assessment in relation to transiting through the passage; and
- Transit through this passage should be undertaken as slowly as reasonably practicable.

Pleasure vessels under 25m LLL are permitted to use the Elizabeth breakwater passage however, extreme caution must be observed whilst transiting through the passage, maintaining a speed as slow as reasonably practicable.

**ALL VESSELS PERMITTED TO USE THE PASSAGES AS DESCRIBED IN PART B ARE REQUIRED TO NAVIGATE WITH EXTREME CAUTION WHEN TRANSITING THROUGH THE ABOVE AREAS.**

**Capt. W Sadler**  
HARBOUR MASTER - JERSEY HARBOURS

04 October 2024