

PORT USERS GROUP (COMMERCIAL)

MONDAY 03 NOVEMBER 2014 – 1730hrs

GATE 2, ALBERT TERMINAL

A meeting for Commercial Port Users was held on Monday 03 November 2014, attended by approximately 20 people including Ports of Jersey staff. The following notes are a record of the meeting.

AGENDA	NOTES OF THE MEETING	ACTION
1. Introduction	The Harbour Master (HM) introduced the Ports of Jersey team in attendance, identifying the Port Users Group as an outcome of the MARICO 2012 Audit.	
2. SMS / PMSC	<p>HM gave an overview of the SMS adopted by Ports of Jersey (Gael Risk / Q-Pulse), identifying the basic principles behind it and how it will be used to inform decisions on Port and Harbour safety.</p> <p>Emphasis was put on users to report any incidents around the Harbours that may be witnessed.</p>	
3. Berth by Berth Overview	<p>Elizabeth Terminal – Traffic Management Group Commercial Director (GCD) is chairing a working group, which includes Ports of Jersey, Condor, Customs, TTS and Solent Stevedores, to consider the introduction into service of the new Austral high speed ferry.</p> <p>Temporary solutions identified for 2015. Work to commence Autumn '15, with the vessel expected on 28 March 2015.</p> <p>Albert Terminal Policy for the next 5 years is to keep the terminal wind and water tight.</p> <p>Victoria Infrastructure Dept. provided an update indicating it is planned to upgrade one crane to full working use, and to review the status of the other two. This will be subject to a business case.</p> <p>It was discussed that the working area may need to be segregated from other traffic and parking, and fencing may be required.</p> <p>Fisherman’s equipment needs to be tidied up with unwanted equipment being removed.</p> <p>JFA requested more CCTV for the Fisherman’s area.</p>	

	<p>PoJ advised that secure access levels were being looked into.</p> <p>NNQ Upgrade of the cranes complete. No.13 crane to be removed.</p> <p>New traffic arrangements have been introduced and further measures will be put in place once Ferryspeed have vacated the Northern end of the warehouse.</p> <p>La Collette It was identified that the Fisherman refurbishment for the pontoon area will take place in 2017. JFA advised that sufficient space should exist to meet demand if the new arrangements with pontoons and piles are implemented.</p> <p>Electrical work on the fuel pontoon has been carried out. Final phase to be carried out in Spring 2015.</p>	
<p>4. Regulation & Guidance</p>	<p>Ports of Jersey Website It was discussed that the website is the authority in law for all Directions, Notice to Mariners etc.</p> <p>Harbour Limits Formalised Harbour Limits for St Helier & all Outlying Harbours (General Direction 8) have been promulgated.</p> <p>VTS VTS limits have now been established. All Jersey Coastguard Officers have also successfully completed their VTSO training; which is both locally endorsed and internationally recognised.</p> <p>IALA Lights It was identified that education around traffic control for small boats and yachts is required for the safe control of vessel traffic in the Small Road.</p>	
<p>5. Commercial Dept. Overview</p>	<p>Condor GCD advised that PoJ have recently signed a 10 year operating agreement with Condor, with their new vessel due into St. Helier Port on 28 March 2015.</p> <p>Incorporation 15 meetings have been held and all relevant papers lodged. Consultation documents will be released by the Minister this week; inclusive of all correspondence.</p> <p>Timeline currently working towards a March 2015 debate, then to the UK Privy Council, back to PoJ in June, for a 01 July 2015 completion.</p> <p>GCD advised that there will be an RPI increase in commercial prices, which has been discussed with</p>	

	those affected. No rates can be confirmed until the appointment of the new EDD Minister this month.	
6. Infrastructure Dept. Overview	<p>West RoRo The new Linkspan is in place and fully operational. Minor snags remain which should be completed by Christmas.</p> <p>4/5 Berths Phase 1 for the seaward of the wind wall currently in progress. Phase 2 & 3 to enhance the area inside the marina will require a separate business case.</p> <p>Marine Ops Centre Upgrade and refurbishment to commence from December with a completion date of September 2015.</p> <p>Harbours are looking to integrate VTS & Coastguard into one building, thus increasing productivity and progression for VTSO's.</p> <p>Gorey Phase 1 emergency works in progress. Phase 2 will follow on from Phase 1 with immediate effect. Phase 3 will take place in Winter 2015, focusing on the structure of the buildings.</p> <p>Dredging It was identified that both commercial and marina dredging will be required; however this is still in the study stage at present.</p> <p>Marina Gates Marina gates upgrade is in the pipeline for future projects.</p> <p>NAV Aids Corbiere lighthouse fog horn – a review into the use of the foghorn is required to take place.</p> <p>It was identified that the Demi des pas has an extremely weak light when viewed from the South-East. This will be reviewed.</p> <p>The light on the end of Gorey Pier will be reviewed with a view to replacing it with an LED light into the leading white sector incorporated in it.</p> <p>Racon was also identified as very weak.</p> <p>Outlying Harbours Cranes 3 cranes to be replaced; Rozel, Bonne Nuit & South Pier. £330,000 budget identified for 3 electric crane replacements.</p>	<p>MOM</p> <p>HM/ MOM</p>

7. Any Other Business	<p>Harbours Exercises It was discussed that a review will be held to look into the communications circulated to external business partners when internal exercises are taking place around the Port.</p> <p>Port Users Group Hand-outs It was identified that a hand-out or short bulleted list would be useful for attendees sent prior to the meeting, for reference purposes.</p> <p>Future Meetings It was agreed that the PUG meeting will be held every 6 months (pre & post-season), at 1730hrs.</p>	<p>HM</p> <p>HM</p>
8. Date & Time of Next Meeting	<p>To be confirmed</p> <p>Monday 06 April 2015, 1730hrs – Albert Terminal?</p>	<p>HM</p>

A copy of the slides used at the meeting is attached and a copy of this document will be posted on the internet at <http://www.portofjersey.je/Pages/ReportsDocuments.aspx>

AGENDA

1. Introduction

2. SMS / PSMC

- Audit
- Incident Review
-

3. Berth by Berth overview

- Elizabeth Terminal

- Albert 1
 - 1
 - 2 & 3 + Terminal
 - 4 & 5 Progress

- NNQ

- Victoria
 - E-X W-X
 - London

- La Collette (Fisherman)

4. Regulation & Guidance

- Website
- Harbour Limits
- VTS
- IALA Lights

5. Commercial Dept. Overview

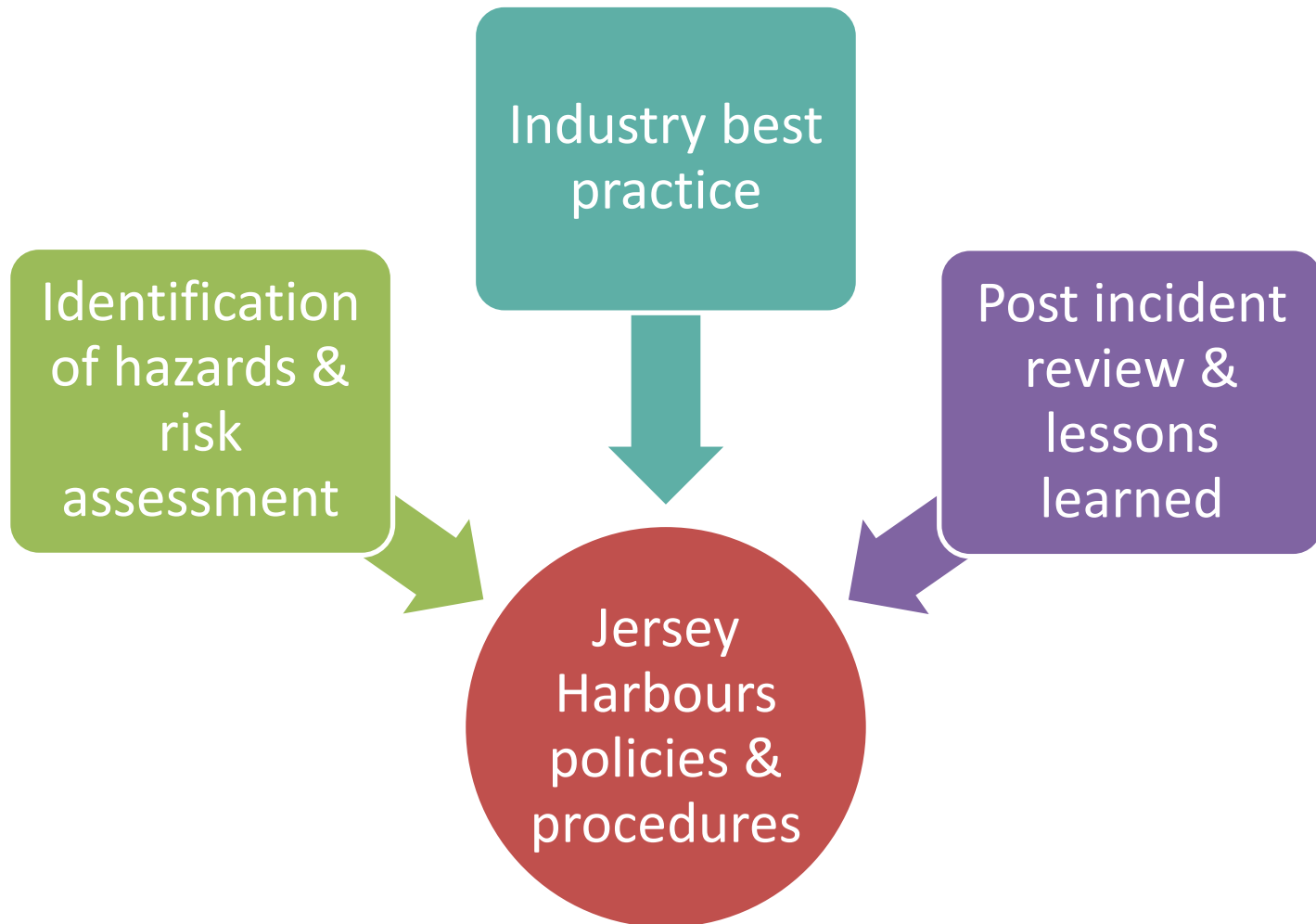
6. Infrastructure Dept. Overview

7. Future Meetings

Marine Safety Management

- Port operates in full compliance with the Port Marine Safety Code – the national standard for port safety in the UK
- Compliance verified every 3 years by an external agency

Development of policies & procedures



Hazard ID & risk assessment

- Bow tie methodology using Gael Risk software application

Threats

Hazardous event

Consequences



Barriers

Post incident review

- Accident, incident and near miss reports submitted online by staff
- Reviewed immediately by duty staff – where necessary, passed to management for analysis & action
- Actions tracked to completion – including revision of procedure if required



JH Management Review



Search Criteria: Status = Closed

Key:
CLOSED = Completed Stage Action

STRICTLY CONFIDENTIAL

Printed on: Thursday, 25 September 2014 17:43

Number	Coordinator	Target Date	Type	Brief Title	Status	Event Date / Time
POJ-IR-5608	Lawrence, Peter	29/08/2014	Other - Please specify below	Ship/ Tug Comms	Closed	16/08/2014 21:14
Concise Description:	On two occasions while the tug has been working with the Arrow, separate vessels have made communications with VTS, This has either been overspoken by Tug/Arrow traffic, or vice versa.					
Immediate Actions:	1) 2) 3)					
Action:	Owner	Target Date	Completed Date	Description & Response		
POJ-IR-5608-1-1	Lawrence, Peter	29/08/2014 00:00:00	18/08/2014	As per JH SMS manual, towage ops should be conducted on a working intership channel, and needs to be publicised to stakeholders accordingly. Shipping companies, tug skippers and pilots reminded by e-mail to undertake initial communications on VHF14 then switch to a working inter ship channel monitoring VHF 14 through out whilst within port area.		

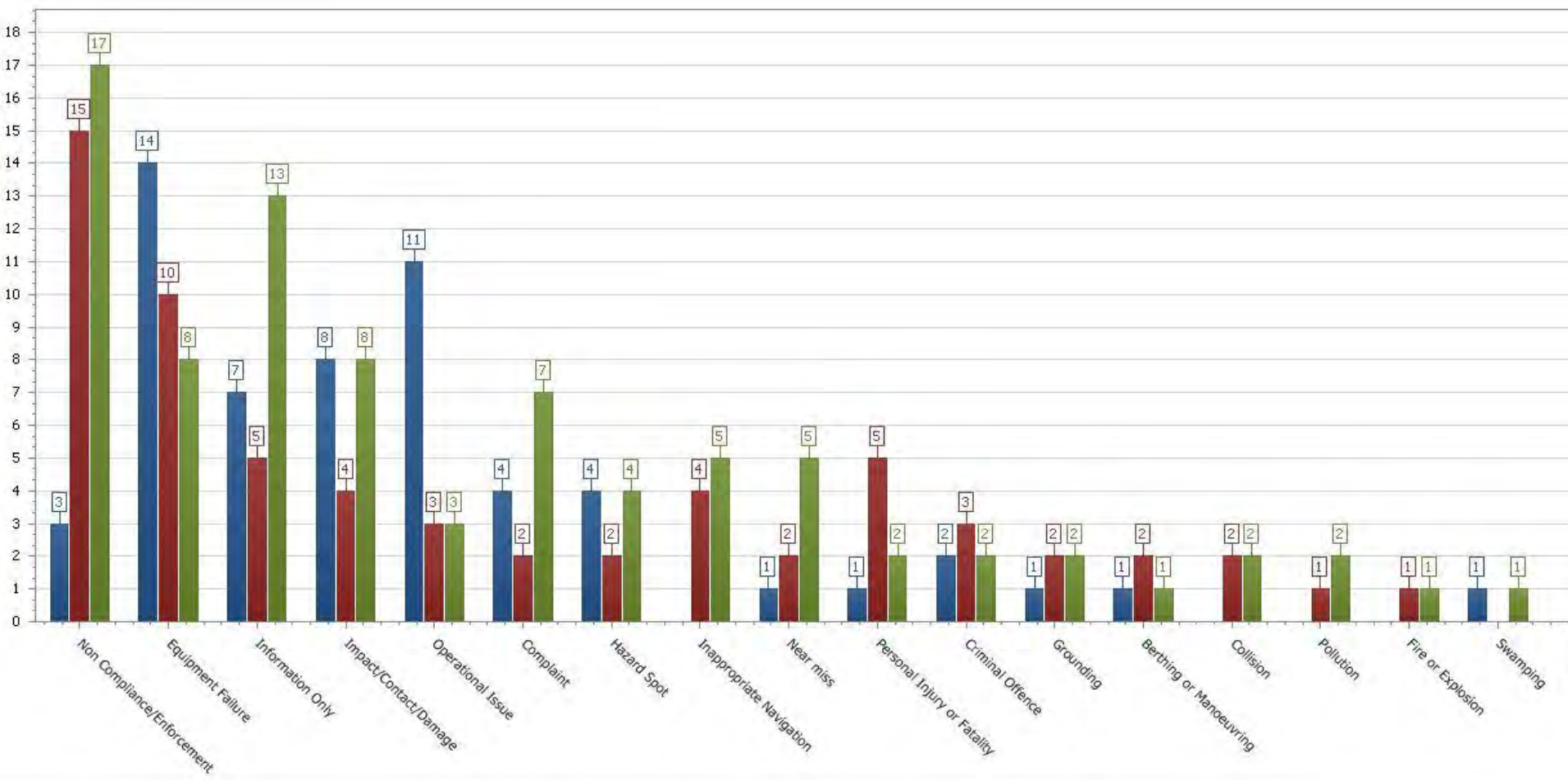
End

Example – Pier Heads & IALA Lights

Risk assessment identified this area as one of high risk of collision between commercial & leisure traffic
Analysis of incidents showed a trend of near misses & IALA light violations

Jersey Harbours established a Navigation Advisory Panel to investigate the underlying causes & consult with stakeholders

Actions identified – changes to light sequences & additional lights on end of Elizabeth West Berth
Installation in progress

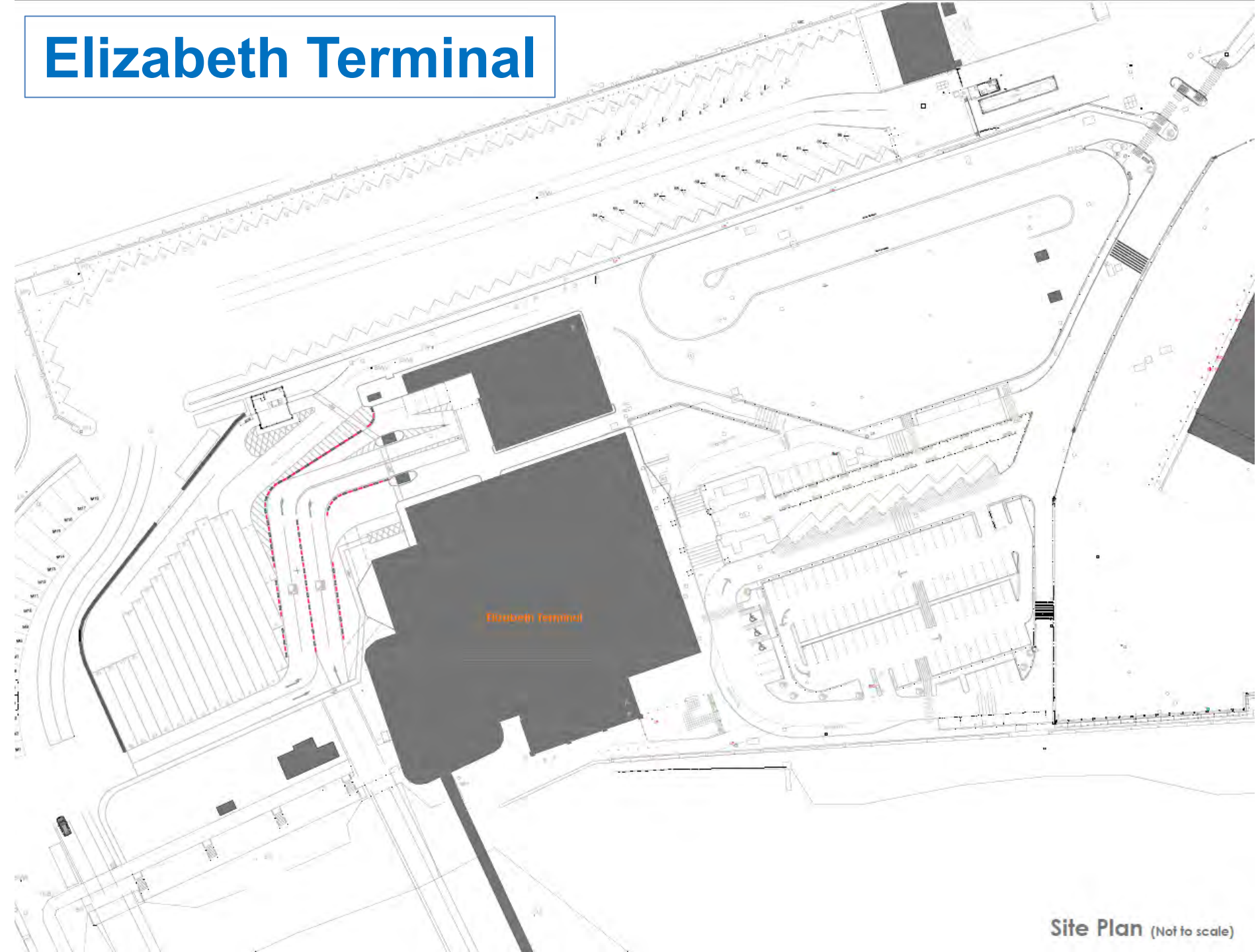


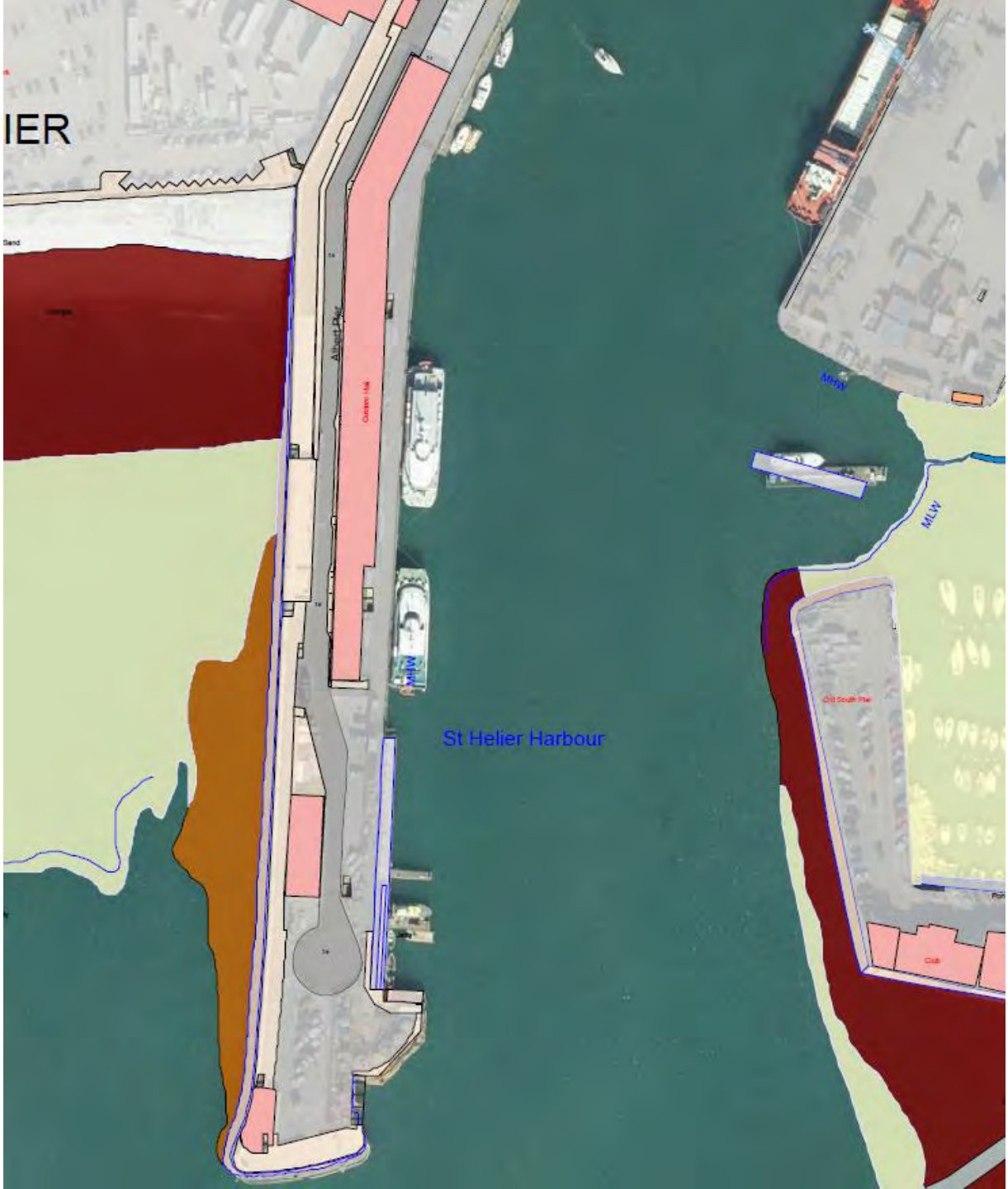
Quarterly comparison of 2014 Harbour incidents (205 total) by type

Elizabeth Terminal

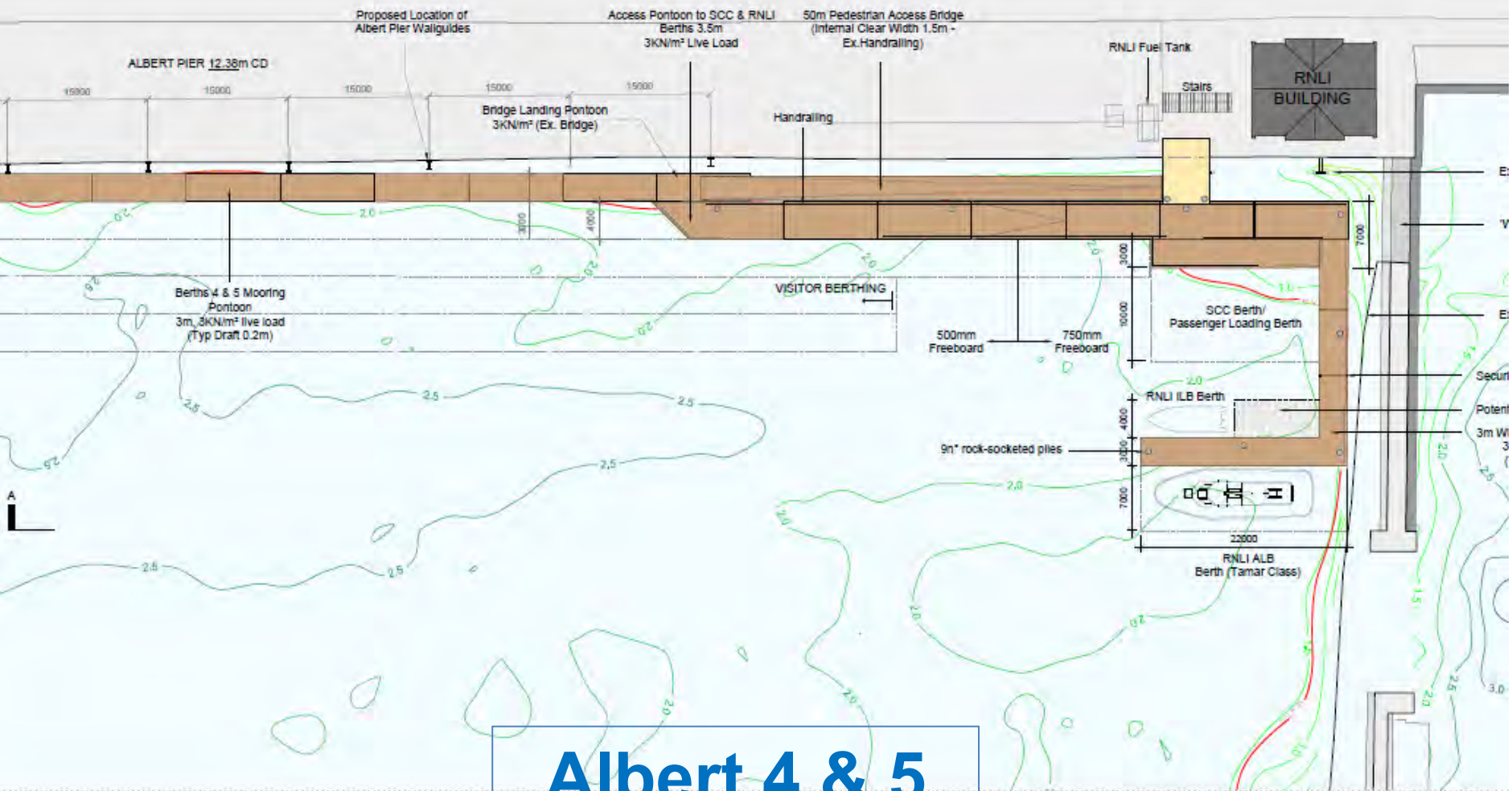


Elizabeth Terminal

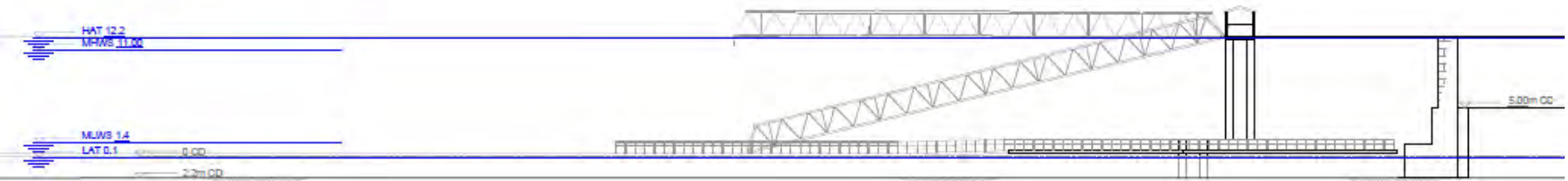




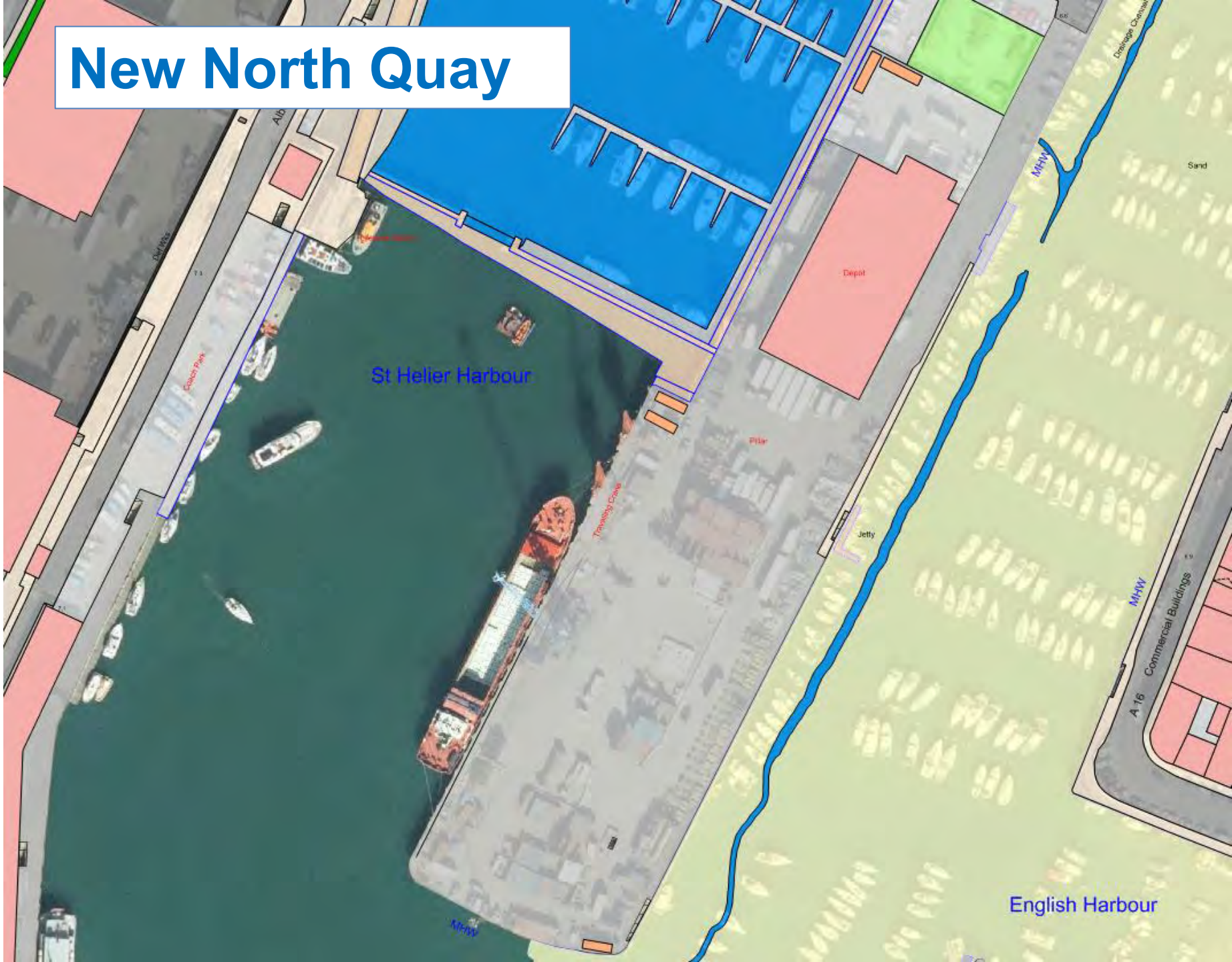
Albert 1, 2 & 3



Albert 4 & 5



New North Quay

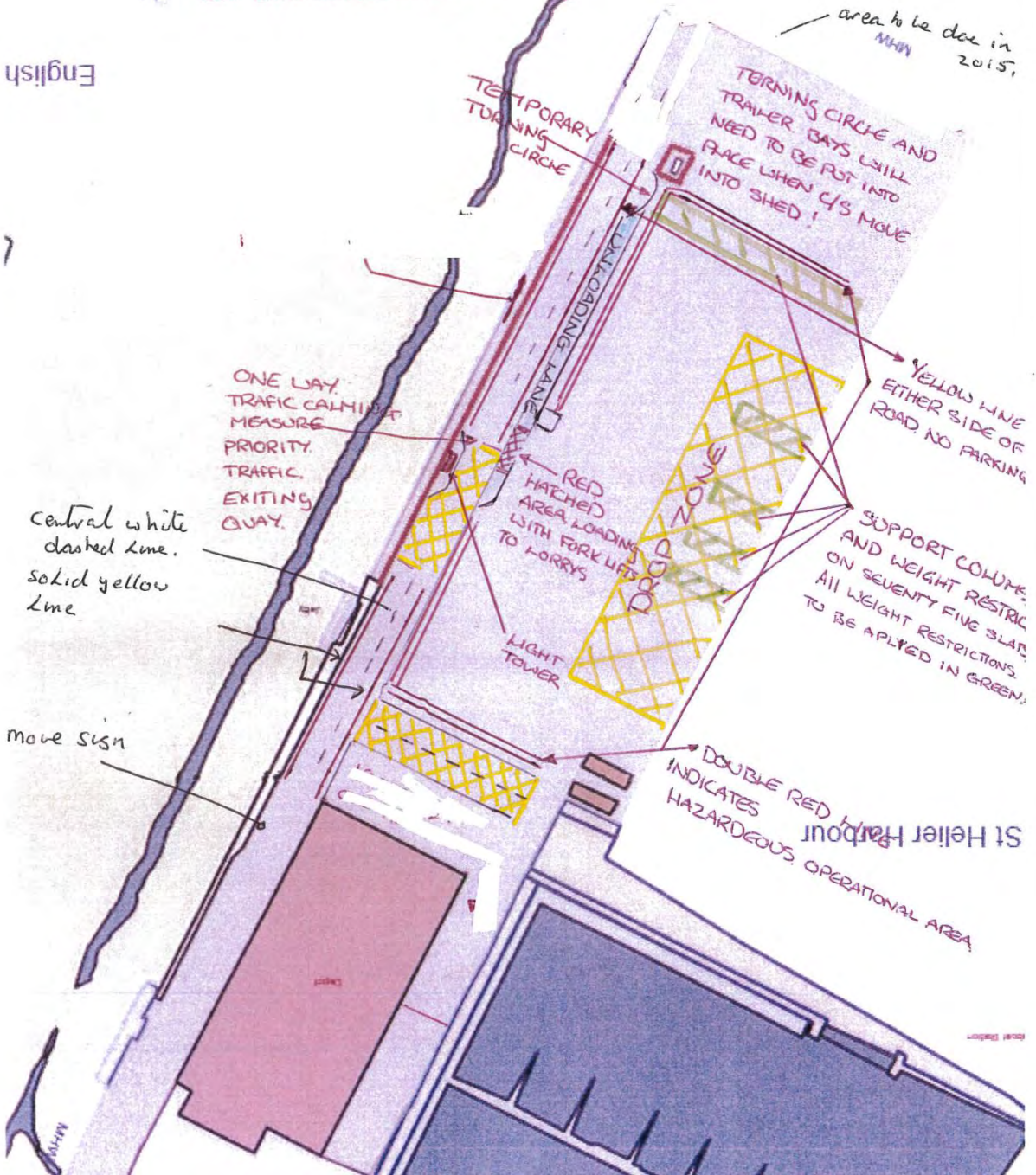


EXISTING ROAD MARKINGS AND FOOT PATHS TO BE REMOVED OUT SIDE OF HAZARDOUS ZONE

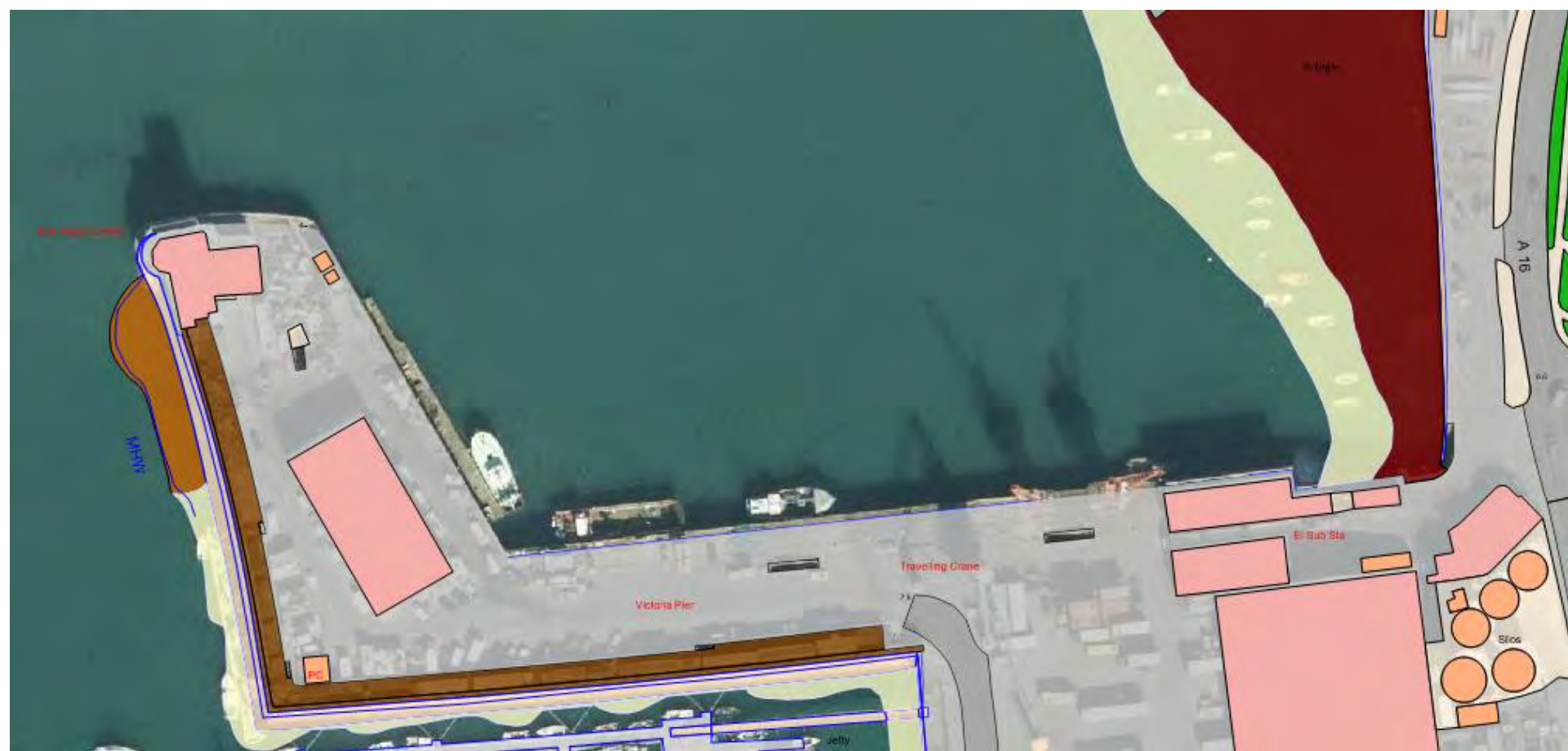
area to be done in MHN 2015

English

New North Quay



Victoria E-X, W-X & London



La Collette



**PORT OF
JERSEY**

98.6% of all goods enter Jersey via the port. The Port of Jersey is Jersey's lifeline port, providing modern commercial services to the island with guaranteed long-term viability.



Regulations and guidance

The guidance and regulations in this section provide essential reading for all commercial and leisure mariners in Jersey Territorial Waters and Jersey Harbours. Visit [Regulations and guidance](#)



Passenger information

Information for passengers travelling through the port, including the passenger terminals, passports and immigration, customs and duty-free, and pets and animals. Visit [Passenger information](#)



Commercial port

Learn about the commercial port, including opening times, services and facilities, VTS, charter vessel licences and States vessels. Visit [Commercial port](#)



Cruise ships

Find out why Jersey makes such a fantastic destination for cruise ships, including port information and passenger facilities. Visit [Cruise ships](#)

PORT NEWS

13/10/2014 - Over 1.8 million passengers through the ports in 2014

15/09/2014 - Elizabeth Terminal caterer announced

19/08/2014 - Proposed redevelopment of Albert Pier berths

14/08/2014 - New ten year operating permit with ferry operator signed

ADVERTISEMENT

**COMMERCIAL PORT USERS**

Incident Report Form

For Pilots, PEC Holders and Masters

SEARCH THIS SITE

ARRIVALS & DEPARTURES

Arrived Valiant Poole/Gsy 13:56 **Departed**
Condor Vit Gsy/Weymouth 14:35

TIDES AT ST HELIER

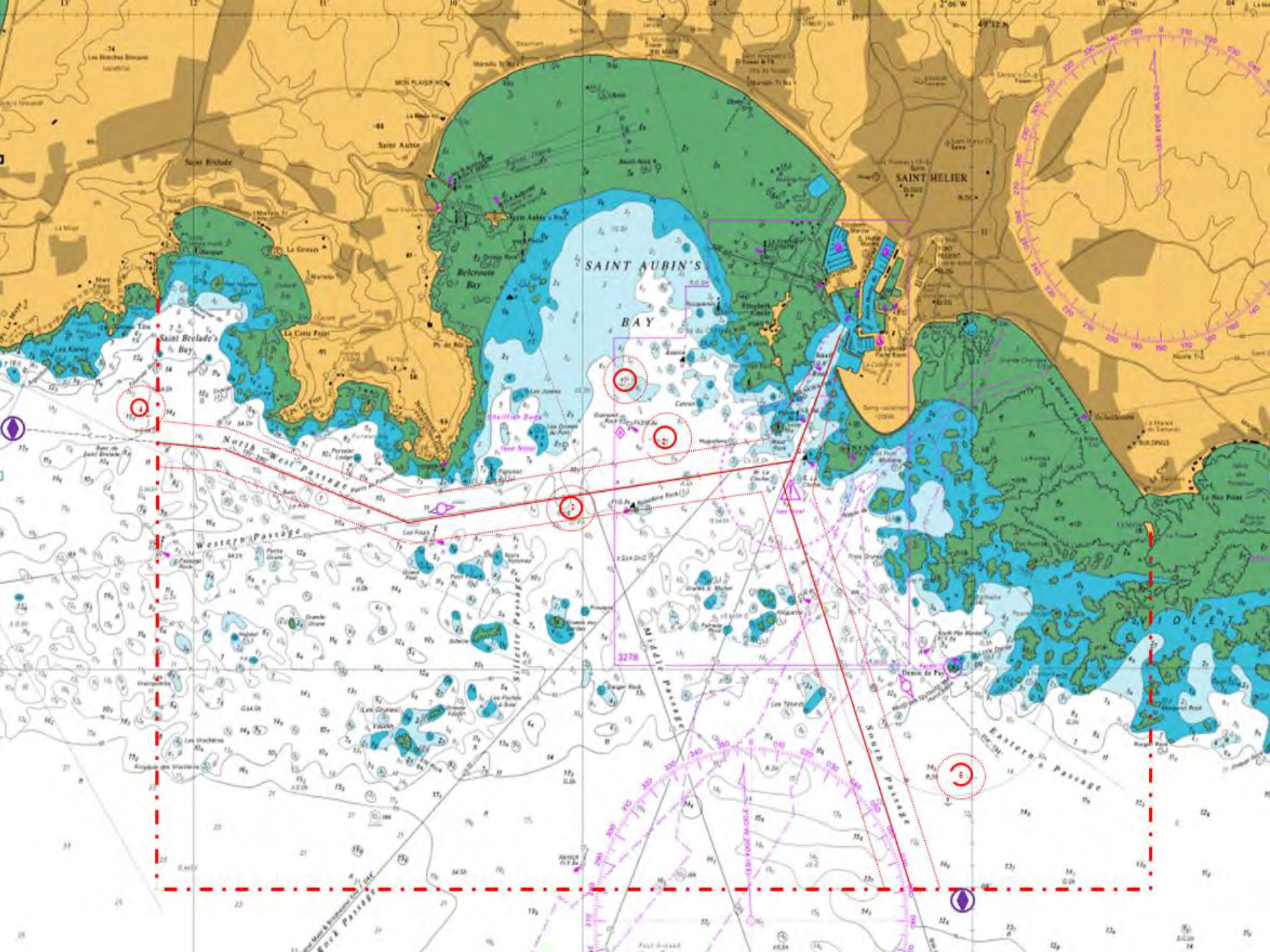
Low on 31 Oct, 18:05, 3.5M**High** on 31 Oct, 23:59, 8.5M **Marina gates closed**
(opening 20:32)

WEATHER AND FORECASTS

Summary for
Friday October, 31 2014max
20°C

MAIL2U / MAIL2Us

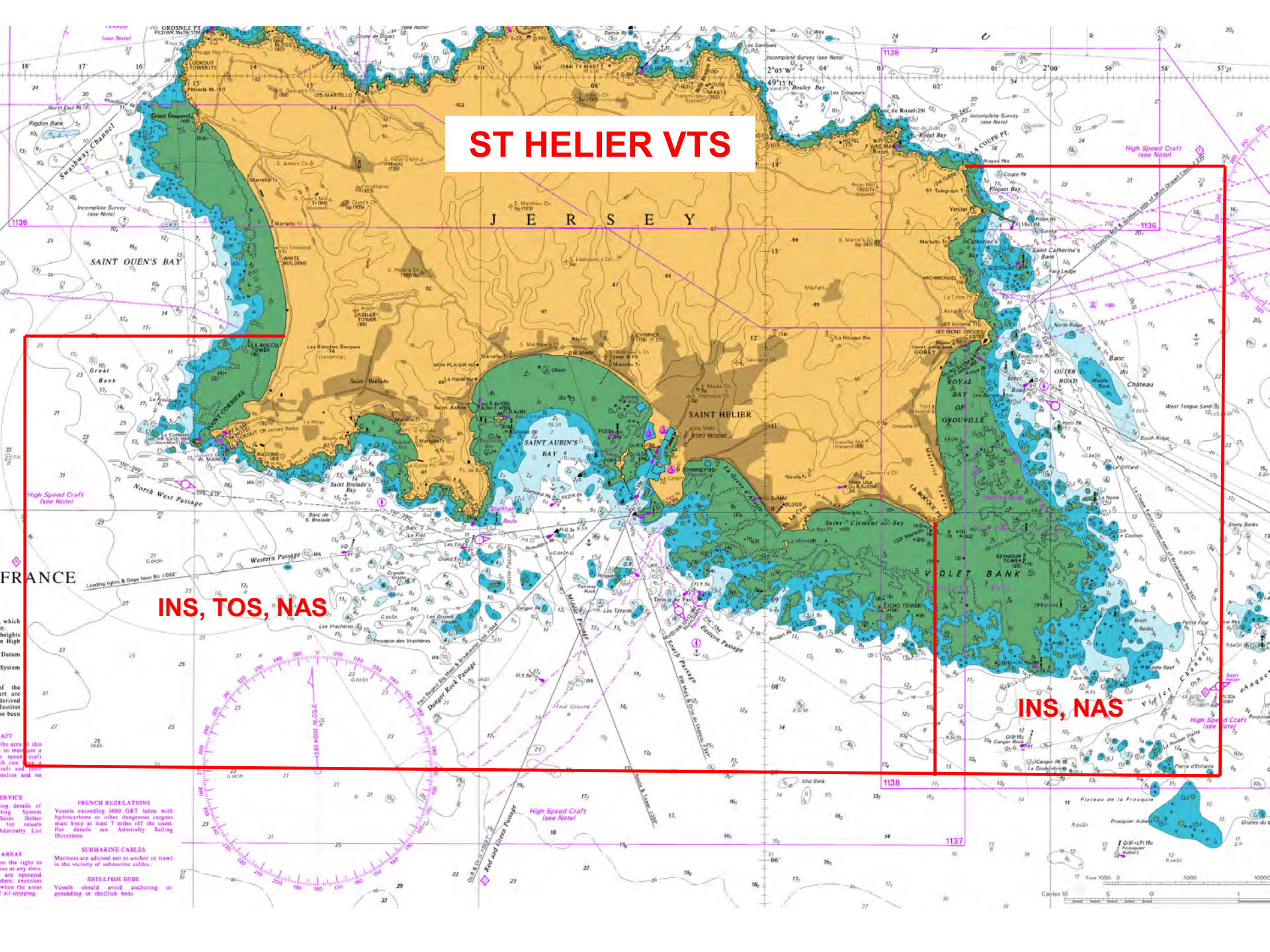
Subscribe to Port of Jersey notices, report an accident or incident, give us your feedback.



ST HELIER VTS

INS, TOS, NAS

INS, NAS



FRANCE

J E R S E Y

Saint Ouen's Bay

Saint Aubin's Bay

Saint Helier

Royal Bay

Groville

Voilet Bank

High Speed Craft (see Note)

High Speed Craft (see Note)

High Speed Craft (see Note)

FRENCH REGULATIONS
Vessels exceeding 1600 GRT laden with hydrocarbons or other dangerous cargoes must keep at least 7 miles off the coast. For details see Admiralty Sailing Directions.

SUBMARINE CABLES
Mariners are advised not to anchor or trawl in the vicinity of submarine cables.

SHELLFISH BEDS
Vessels should avoid anchoring or grounding in shellfish beds.

which heights in High Datum System of the chart are derived from the area in which the area is marked with a speed craft can be used for reference and on

SERVICE
ing details of the System. See Admiralty List of Lights and Fog Signals.

AREAS
on the right of the chart are marked with a speed craft can be used for reference and on

IALA Traffic Signal Lights

