



Notice to Mariners No 34 of 2019

Jersey North Coast - BA 1136 2669 and 3655

NKT High Voltage cables AB (NKT)

Submarine Electricity Cable Trenching Services Works - October/November 2019

Guernsey (Havelet Bay) – Jersey (Greve de Lecq)

Mariners are advised that the cable trenching works are now complete on all sections of the replacement cable and the related vessels have left the area.

The navigational precaution measures with respect to the operational vessels have been cancelled on all sections of the cable route.

Additional Navigation Safety Information

Owing to the nature and mobility of the sediments on much of the route it may be some time until full protection of the cable is achieved. **Fishing vessels that tow gear are, as a matter of course, requested not to tow over the HVAC and Fibre Optic cables serving Guernsey and Jersey.** Refer to the trenching services route below for the position of the route.

At this time there is a particular risk of snagging on exposed cable whilst the seabed reinstates and fishing vessels should operate with additional caution in proximity to the new cable.

Fixed gear fishermen should exercise caution in vicinity of the new cable to avoid unnecessary snagging and potential loss of gear.



Trenching Services Route

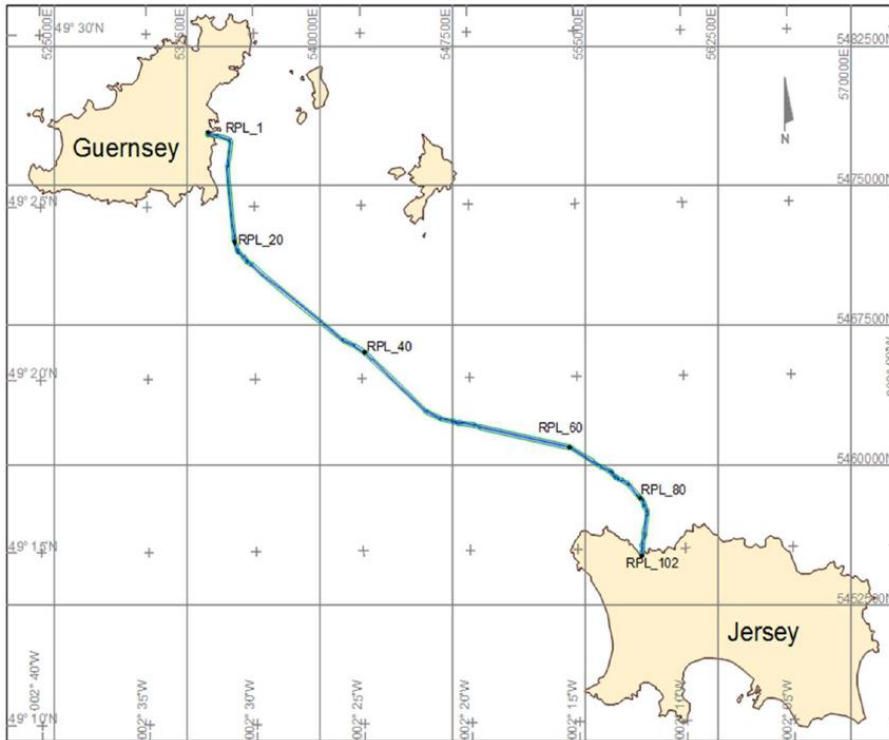


Figure 1: GJ10 HV power cable Route

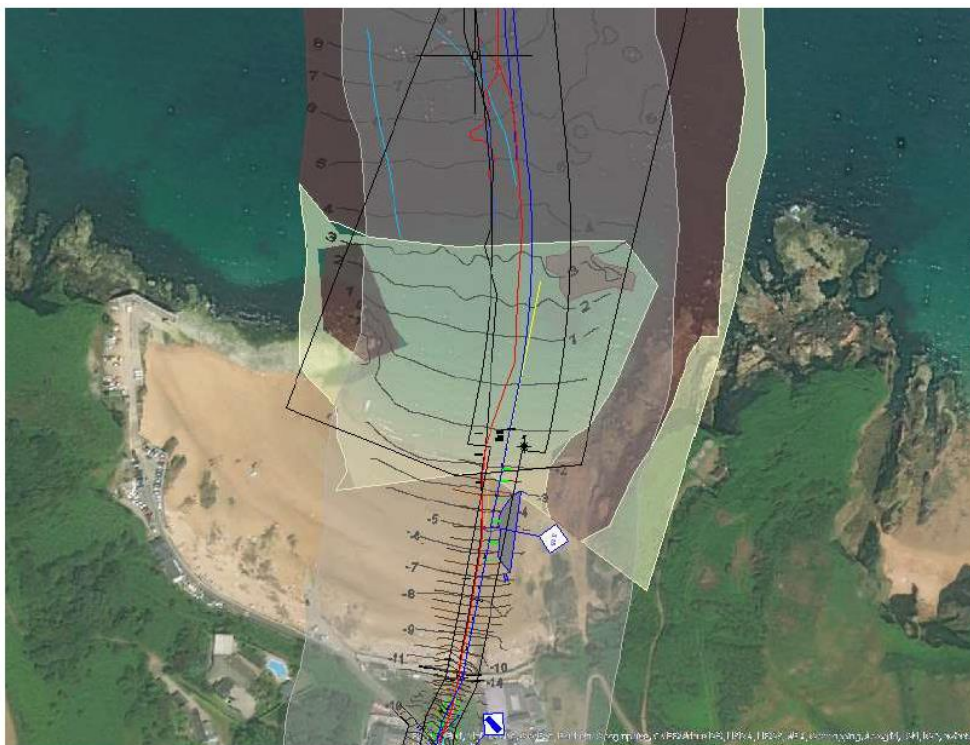


Figure 2: Nearshore Works - Jersey (Greve de Lecq)



No.	WGS84-UTM30N			
	Easting	Northing	Latitude	Longitude
1	533654.58	5477883.36	49° 27.161'N	002° 32.139'W
2	533656.49	5477791.98	49° 27.111'N	002° 32.138'W
3	533665.03	5477770.48	49° 27.100'N	002° 32.131'W
4	534229.01	5477680.39	49° 27.049'N	002° 31.665'W
5	534883.56	5477442.30	49° 26.918'N	002° 31.124'W
6	534947.47	5477266.76	49° 26.823'N	002° 31.072'W
7	534774.56	5476085.44	49° 26.187'N	002° 31.222'W
8	534825.07	5475221.45	49° 25.720'N	002° 31.184'W
9	535294.87	5471605.47	49° 23.767'N	002° 30.815'W
10	541951.48	5466412.88	49° 20.939'N	002° 25.344'W
11	545934.37	5462940.51	49° 19.048'N	002° 22.078'W
12	546746.85	5462543.19	49° 18.830'N	002° 21.410'W
13	554173.39	5460946.45	49° 17.932'N	002° 15.292'W
14	556604.08	5459459.20	49° 17.116'N	002° 13.299'W
15	557359.43	5459025.65	49° 16.878'N	002° 12.680'W
16	558203.18	5458141.26	49° 16.395'N	002° 11.992'W
17	558296.41	5457902.69	49° 16.266'N	002° 11.917'W
18	558460.56	5457574.28	49° 16.088'N	002° 11.784'W
19	558475.59	5457338.93	49° 15.961'N	002° 11.774'W
20	558320.23	5456294.73	49° 15.398'N	002° 11.911'W
21	558233.00	5455903.91	49° 15.188'N	002° 11.987'W
22	558220.66	5455529.15	49° 14.986'N	002° 12.000'W
23	558177.51	5455204.12	49° 14.811'N	002° 12.038'W
24	558164.51	5455177.46	49° 14.796'N	002° 12.049'W
25	558160.99	5455159.35	49° 14.786'N	002° 12.052'W
26	558161.41	5455156.18	49° 14.785'N	002° 12.052'W
27	558171.02	5455146.93	49° 14.780'N	002° 12.044'W

Ports of Jersey

St Peter, Jersey, JE1 1BY

T +44 (0)1534 447788 E enquiries@ports.je



PORTS OF JERSEY

YOUR ISLAND GATEWAY

With immediate effect Notice to Mariners No.33 of 2019 is cancelled.

This notice will remain in force until a cancellation notice is issued.

A handwritten signature in black ink, appearing to read 'Bill Sadler'.

Captain Bill Sadler

Harbour Master, Jersey Harbours

19 November 2019