

Notice to Mariners No 07 of 2022

Jersey South Coast – BA Chart 3278

Reduced depths, St Helier Turning Basin

1. Following a recent survey, mariners are advised depths in the general area of the turning basin, outside La Collette and the Pier Heads has reduce to 2.1m below chart datum (CD).

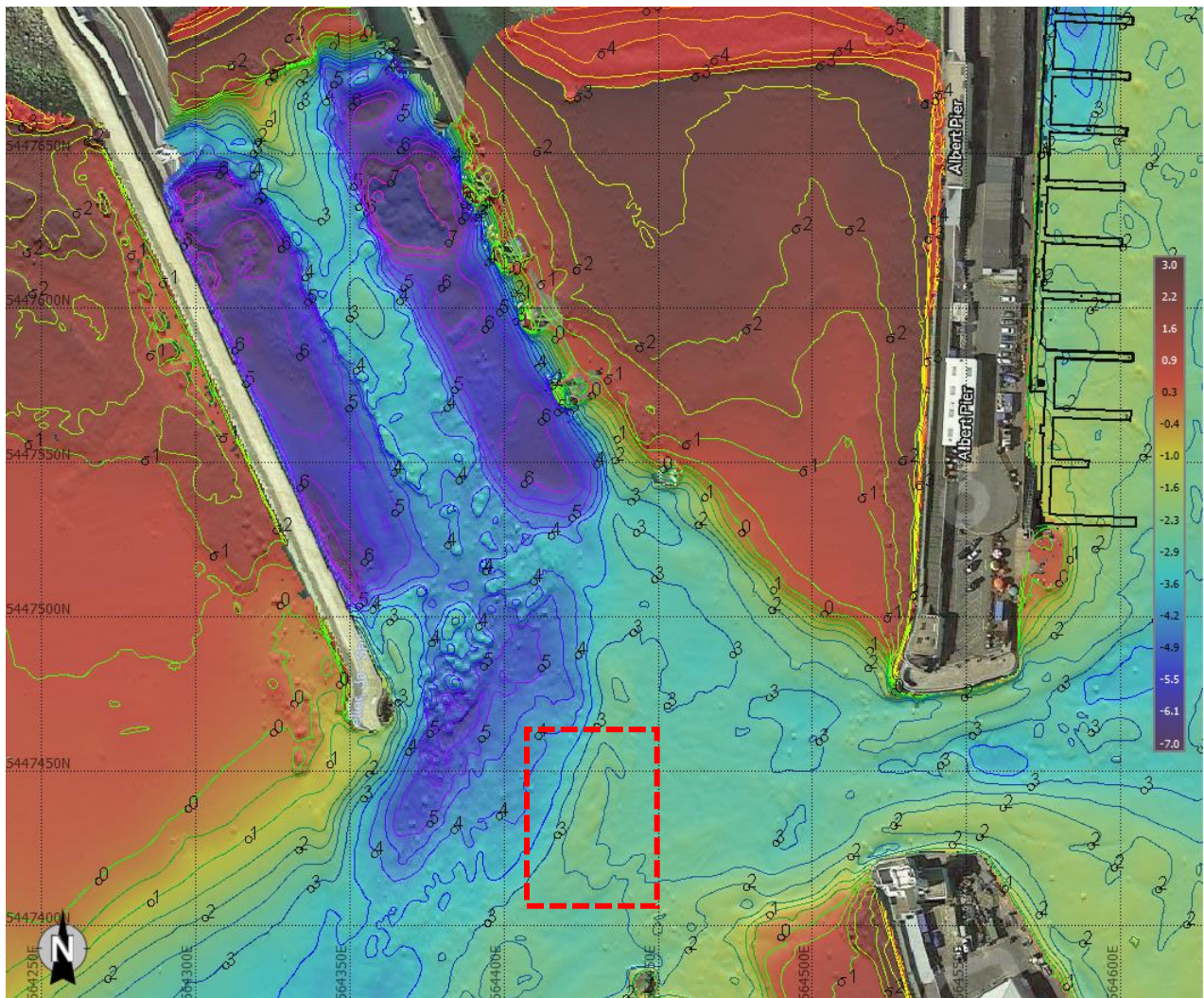


Figure 1 Shoal of 2.1m highlighted.



Captain Bill Sadler
Harbour Master, Jersey Harbours

02 February 2022