



Notice to Mariners № 12 of 2022

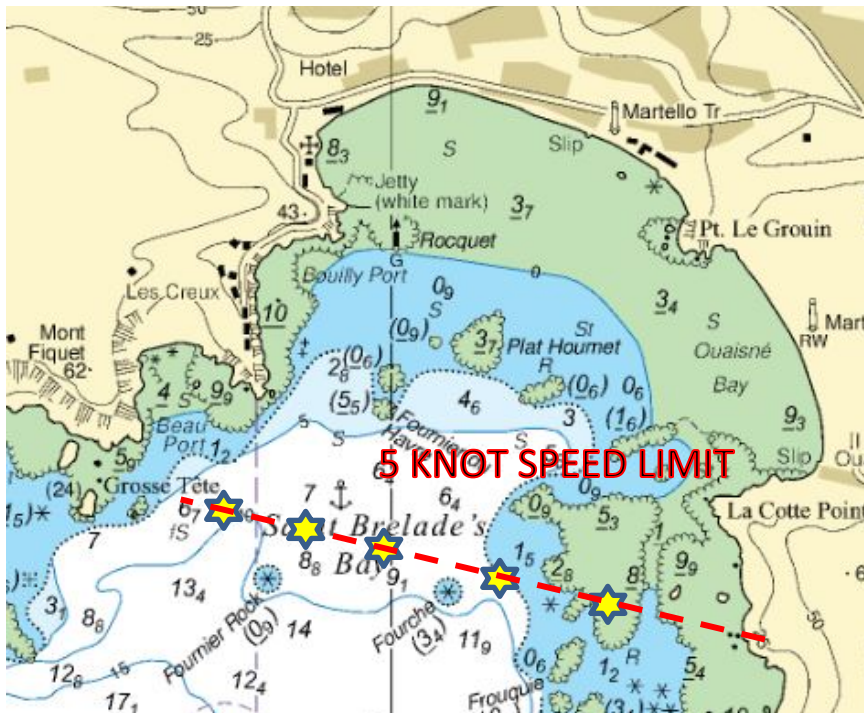
Jersey South Coast – St Brelade’s Bay | Chart BA 1137

Special Mark Buoys

Mariners are advised that a series of five special mark yellow buoys have been deployed in a line between Les Jeteuse Point and La Cotte Point, as shown on the chartlet below.

Each large buoy is marked with 5 knots speed limit.

This speed limit will come into force on the **28th May 2022** and will remain in force until **19th September 2022**.



© Crown Copyright and/or database rights. Reproduced by permission of the Controller of Her Majesty's Stationery Office and the UK Hydrographic Office (www.ukho.gov.uk).

The above illustration shows the approximate positions.

Captain Bill Sadler
Harbour Master, Jersey Harbours

5th May 2022