



Notice to Mariners No 15 of 2021

Acoustic Wave and Current meter deployed

Acoustic Wave and Current (AWAC) – Deployment

1. Mariners are advised that an Acoustic Wave and Current meter has been deployed offshore of Anne Port / Archirondel at the position
049° 12.47' N 002° 00.54' W
2. The AWAC is a seabed frame that sits 0.5m above the bed level. The sensor is marked with a surface buoy.
3. The sensor will be in position for at least one month.

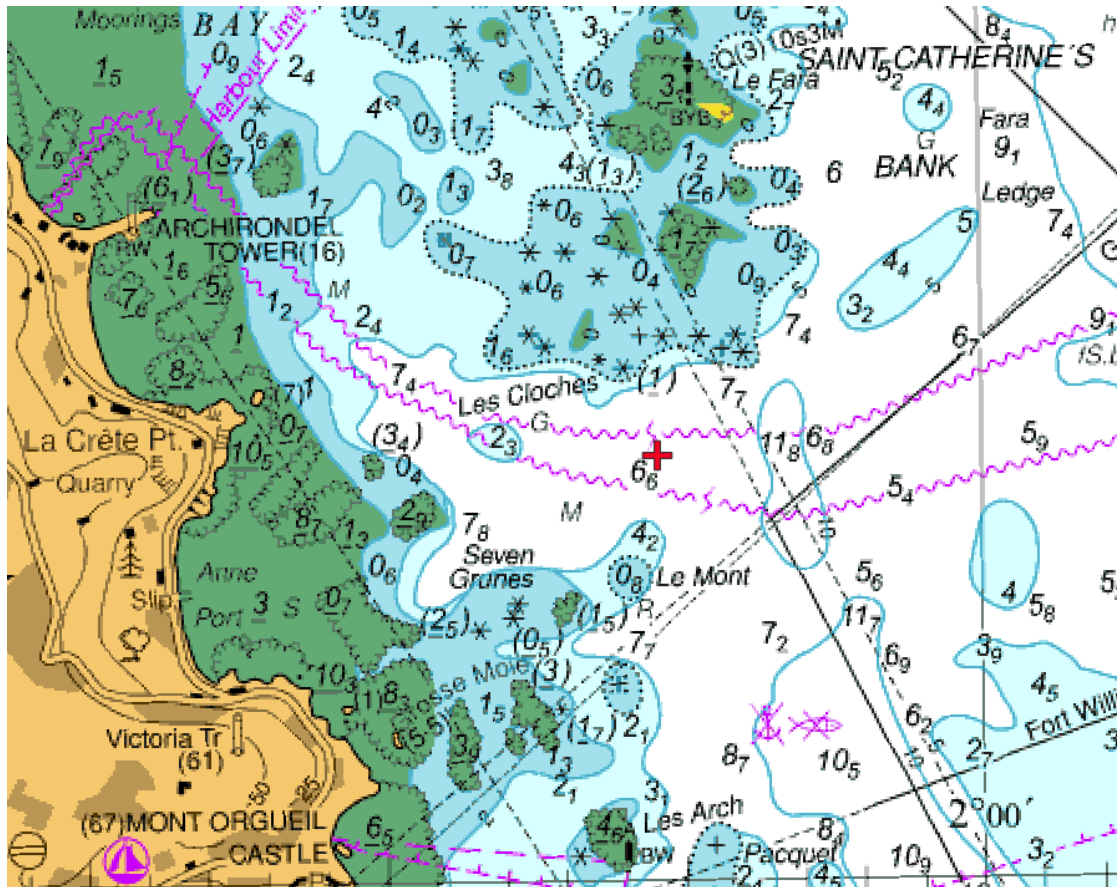


Figure 1 A chartlet from Chart 1138 showing the deployment location of the AWAC, marked with a red cross.

Captain Bill Sadler
Harbour Master, Jersey Harbours
20th May 2021