



Notice to Mariners No 19 of 2020

Jersey East Coast – Saint Catherine’s Bay | Chart BA 1138

Mariners are advised that the following seasonal buoyage will be deployed in Saint Catherine’s bay and will come into force on or about **1st July 2020**;

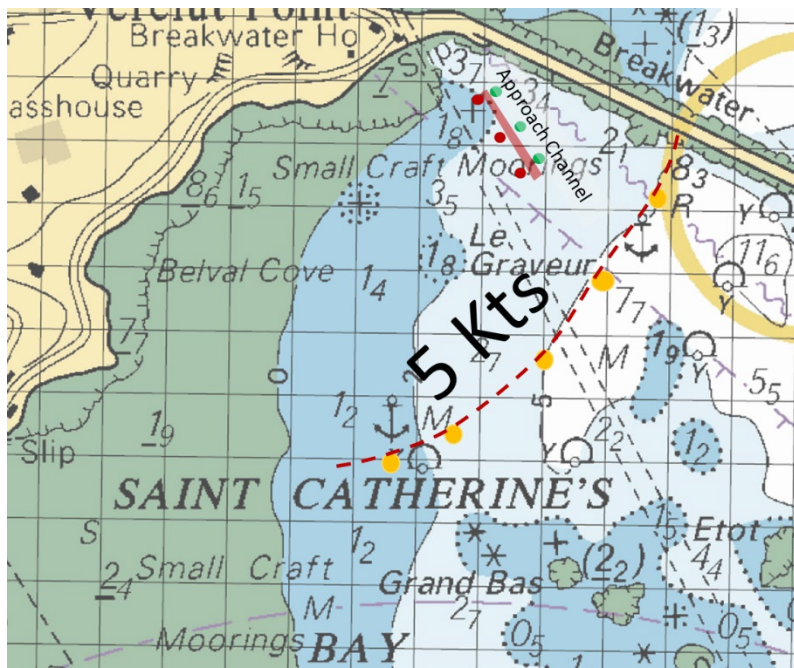
Special Mark Buoys – 5 knot speed limit

The yellow buoys depicted on chart BA 1138 will be re-positioned. Vessels operating inside this line of buoys must observe the 5-knot speed limit.

Slipway approach channel

A new approach channel will be introduced to manage safe access for vessels to and from the slipway through the moorings. The channel will be marked by red and green lateral buoys.

The chartlet below shows the approximate positions of the buoyage for the 5-knot limit and the approach channel.



Captain William Sadler
Harbour Master, Jersey Harbours

19 June 2020