

Notice to Mariners No 22 of 2023

Jersey South Coast | BA1137 & 3655

JERSEY INTERNATIONAL AIR DISPLAY ST AUBIN'S BAY EXCLUSION ZONE

Established and in force on the following dates and times:

Wednesday 13 September 2023 : 1245 – 1700 (Validation exercise)

Thursday 14 September 2023 : 1245 – 1700 (Main event)

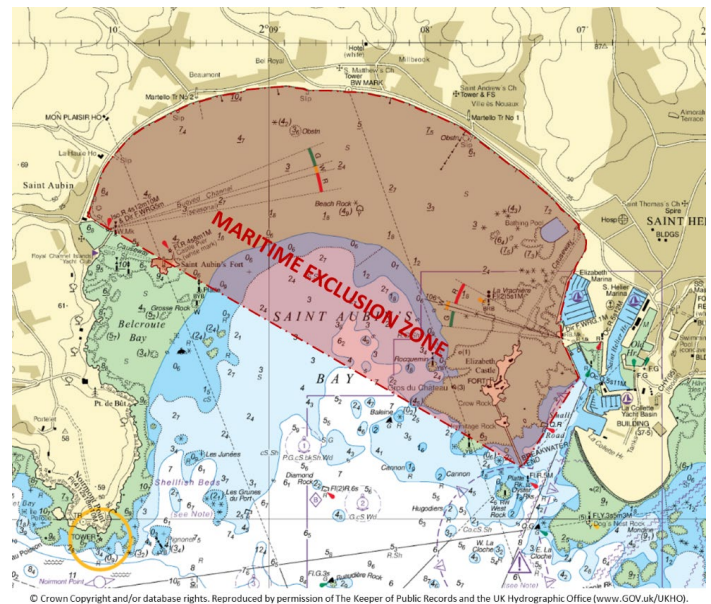
Maritime Exclusion Zone: From north of a line between the end of Elizabeth harbour west wall, to the south end of Elizabeth castle breakwater, thence through St Aubin's fort to the outer end of St Aubin's harbour south arm.

Mariners are advised that during these times the following applies:

- Navigation and anchoring in the exclusion zone is prohibited (a prohibition which applies to all watercraft of any description including Personal Watercraft PWC/Jet Skis).
- Sea access to and from Elizabeth Marina including the approach channel is prohibited.
- Sea access to and from St Aubin's harbour and the outer moorings at St Aubin's is prohibited.

It should also be noted:

- Elizabeth marina western and southern promenades will be closed to the public during these times.
- The beach between Elizabeth Marina and St Aubin's harbour will also be closed to the public.
- St Aubin's fort is closed to the public.



This exclusion zone is issued as a Notice to Mariners and a Harbour Master's Special Direction under Regulation 3 (1) a) of Harbours (Jersey) Regulations 1962. Failure to comply with a Harbour Master's Direction is an offence, which carries a fine of up to £10,000 (Level 3).

This notice will self cancel on the 14 September 2023 at 2359.



Captain Bill Sadler
Harbour Master, Jersey Harbours

7 September 2023