

Notice to Mariners No 22 of 2022
Jersey and adjacent coast of France - BA 3655
Jersey West Coast – Maritime Exclusion Zone

Maritime Exclusion Zone

A maritime exclusion zone has been declared 250m radius around the location of a wreck at
49° 13.105'N 002°20.024'W

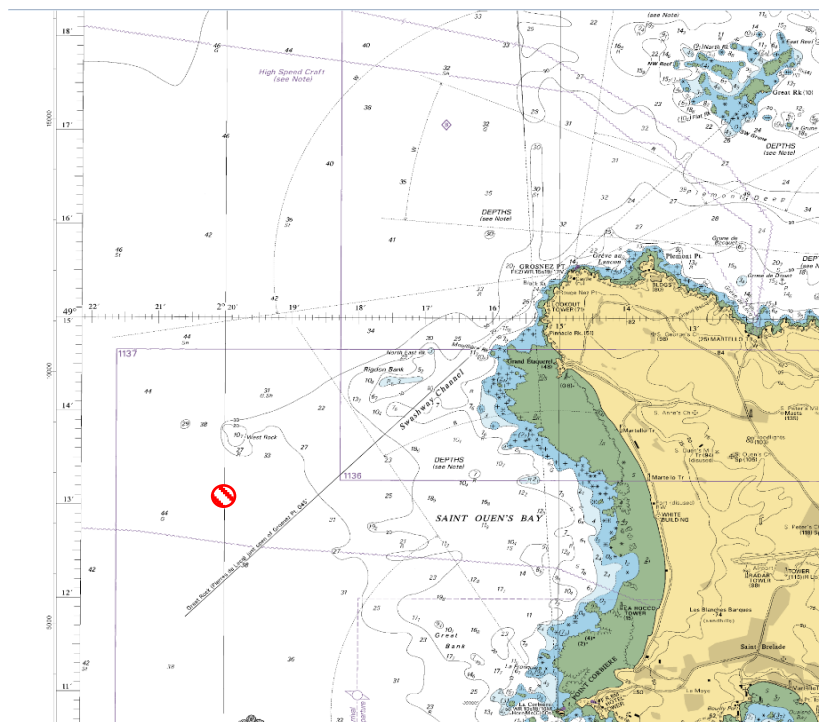


Figure 1 Excerpt from BA Chart 3655 showing exclusion zone in Red

The location is now marked by a virtual aid to navigation

“A Virtual Aid to Navigation (AtoN) does not physically exist, but is a digital information object (symbol and text information) promulgated by an authorized service provider that may be presented on navigational systems. This is used to mark an object other than an existing AtoN or a non-object, such as a reference point in the water or on land.”

(IALA G1081 Provision of Virtual Aids to Navigation ed2.0)



Captain Bill Sadler
 Harbour Master, Jersey Harbours

18 January 2023

Revised – 06/01/2023 – Exclusion zone reduced to a 250m radius. | Revised – 18/01/2023 – Virtual Aid to navigation added.