

Notice to Mariners No 02 of 2024
Chart BA 3278 Saint Helier

Vrachiere Passage – Rear Mark

Mariners are advised that the Vrachiere Passage Rear Mark has changed. The lattice tower and Day-Glo board have been removed and replaced with a single post. Temporary Day-Glo patches have been applied.

Rear mark position

49° 10.745' N 002° 07.050' W

BOUR/MARINA	RADIO CHANNELS	DIALLING CODE	TELEPHONE NUMBER	WEB ADDRESS
Helier Marina	–	+44(0)1534	447708	www.ports.je
Elizabeth Marina	–	+44(0)1534	447708	www.ports.je
Collette Yacht Basin	–	+44(0)1534	447708/447773	www.ports.je

Tidal Levels referred to Datum of Soundings

Place	Heights in metres above datum				Datum and Remarks
	MHWS	MHWN	MLWN	MLWS	
Helier	11.0	8.1	4.0	1.4	5.88m below Ordnance Datum (local)

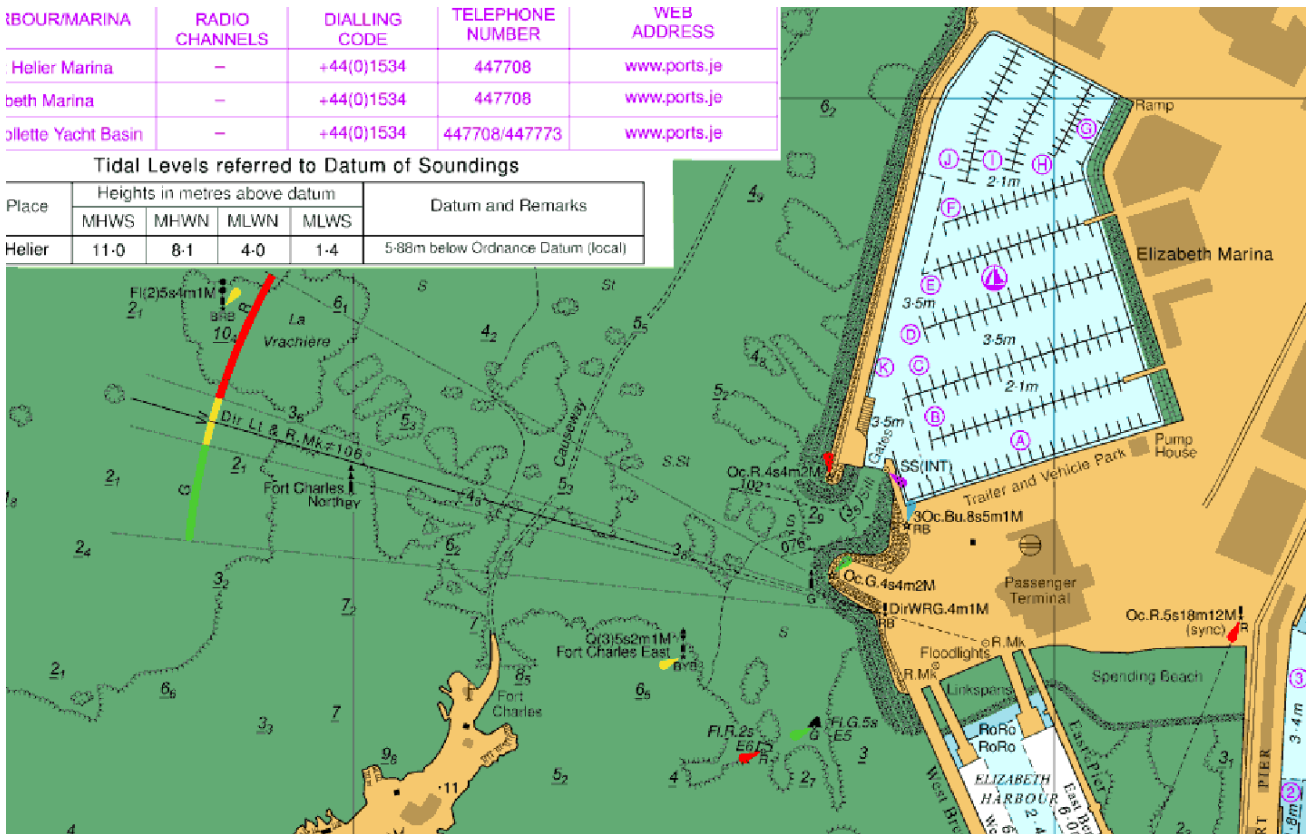


Figure 1 Section of BA Chart 3278 showing Vrachiere Passage



Captain Bill Sadler
 Harbour Master, Jersey Harbours

11 January 2024