

## Notice to Mariners № 31 of 2021

### St Helier Harbour | BA3278

#### Elizabeth Marina Storm Gate Reinstatement | Part B – Lift from NNQ and transfer to Elizabeth marina

With reference to NtoM 28 of 2021

The Elizabeth Marina storm gate will be lifted from the New North Quay (NNQ) and transported by a heavy lift barge to Elizabeth marina entrance, where it will be re-instated.

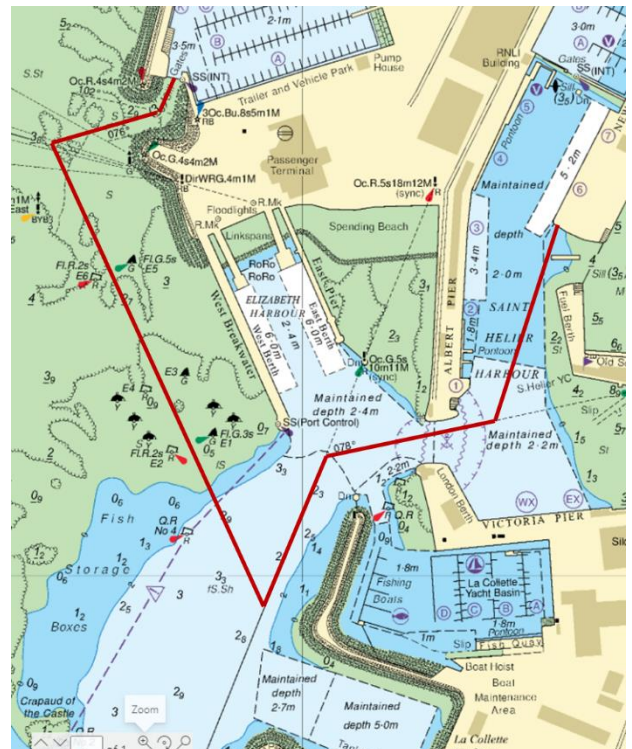
- This part of the works will be undertaken between the **14<sup>th</sup> and 18<sup>th</sup> November 2021**.
  - Last accessible tidal window will be on the evening of the 14<sup>th</sup> November (HW 1500)
- The marina will **be closed** for this period, there will be **no access** in or out.
- The lift off the NNQ and transfer to the marina will take place over a one day period with the tide on the **15<sup>th</sup> November**.

When the barge transits from the Elizabeth marina to the NNQ, access to St Helier Harbour, St Helier Marina, Old Harbour, La Collette yacht basin, Elizabeth harbour, northern area of the Small Roads and the Elizabeth marina and it's approach channel will be restricted.

- The harbour will be closed to traffic during specific legs of the transit, IALA lights and instruction from St helier VTS must be observed at all times.
- St Helier VTS will broadcast a navigational warning on VHF ch 14.
- The transit is expected to take approximately 1hr.
- It is planned around the HW period

This notice will self-cancel on the 18<sup>th</sup> November 2021.

Dates updated 08/11/2021



Chartlet depicting the planned route

Captain Bill Sadler | Harbour Master, Jersey Harbours

02 November 2021

