

Notice to Mariners № 32 of 2021

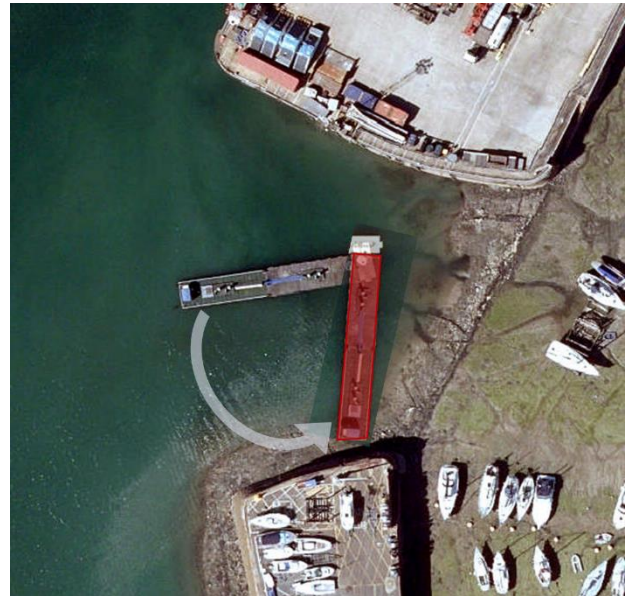
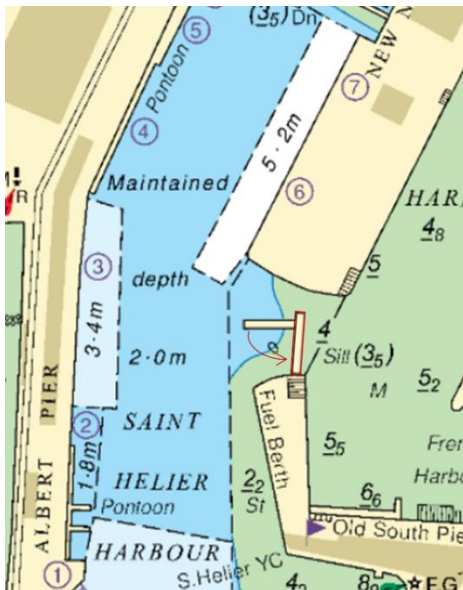
St Helier Harbour | BA3278

Elizabeth Marina Storm Gate Reinstatement | Part B – Isolated Fuel Pontoon

With reference to NtoM 28 of 2021

To enable safe access to the New North Quay (NNQ) for the barge to lift the Elizabeth Marina storm gate; the 24/7 isolated fuel pontoon located between the NNQ and South Pier will temporarily be aligned in a North to South orientation (as shown in images below).

- a) This will be on **Monday 15th November 2021**
- b) There will be no access to transit between the pontoon and south pier.
- c) Access will be possible to/from the drying harbour between the fuel pontoon and NNQ. Mariners should proceed with caution when transiting through this area – subject to part d) below.
- d) There will be no access to/from the drying harbour whilst the barge is manoeuvring and operating within St Helier Harbour.
- e) The pontoon will be unserviceable during this time.



This notice will self-cancel on the 16th November 2021.



Captain Bill Sadler
Harbour Master, Jersey Harbours

02 November 2021

Dates updated 08/11/2021