



## Notice to Mariners No 03 of 2022

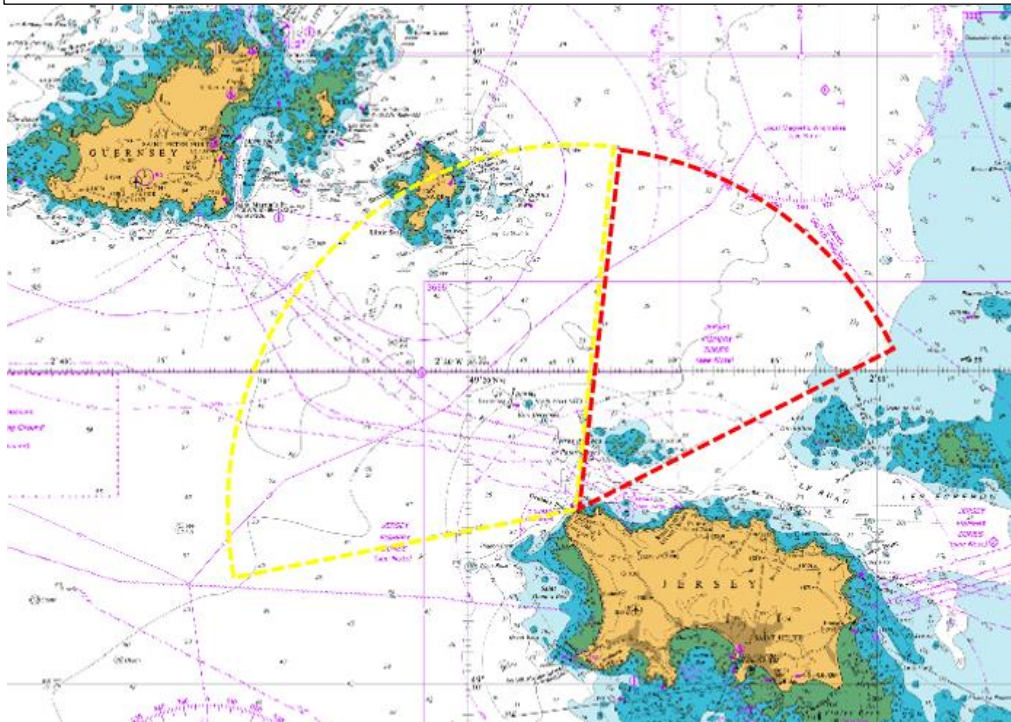
Jersey North Coast – BA Chart No: 2669, 3655 and 1136

### Gronsez Lighthouse

Mariners are advised that, following works that took place on Gronsez Lighthouse, the characteristics of the lighthouse have changed as follows:

- Existing Charted Characteristics: Fl(2)WR.15s50m19/17M
- **New Characteristics: Fl(2)WR.15s50m10M**

Chart indicating the nominal coverage of a 10-mile Grosnez Point Lighthouse



The only change is the range of the light of Gronsez Lighthouse being reduced from 19/ 17 nautical miles down to 10 nautical miles.

This notice will be cancelled once a formal chart correction has been issued by the United Kingdom Hydrographic Office.

Captain Bill Sadler  
Harbour Master, Jersey Harbours

31 January 2022