

## Notice to Mariners No 05 of 2024

Jersey East Coast – Saint Catherine’s Bay | Chart BA 1138

### St Catherine’s Slipway Approach Channel – Lateral Buoys

Mariners are reminded that an approach channel is deployed to manage safe access for vessels to and from the slipway through the moorings. The channel is marked by red and green lateral buoys.

The outer most lateral buoys display the following light sequences:

Starboard Lateral Buoy

Position: **49° 13.347’ N 002° 00.934’ W**

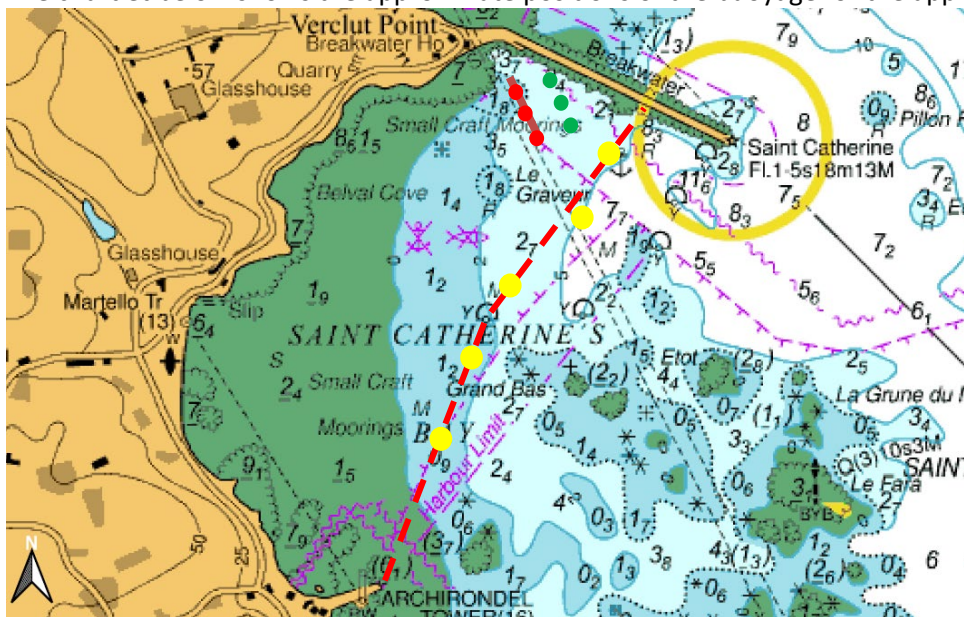
Light Sequence: Fl.G.4s

Port Lateral Buoy

Position: **49° 13.344’ N 002° 00.957’ W**

Light Sequence: Fl.R.4s

The chartlet below shows the approximate positions of the buoyage for the approach channel.



© Crown Copyright and/or database rights. Reproduced by permission of the Controller of Her Majesty's Stationery Office and the UK Hydrographic Office ([www.ukho.gov.uk](http://www.ukho.gov.uk)).



Captain Bill Sadler  
Harbour Master, Jersey Harbours

13 March 2024