

Notice to Mariners No 12 of 2024
Chart BA 1138 - Jersey's East Coast

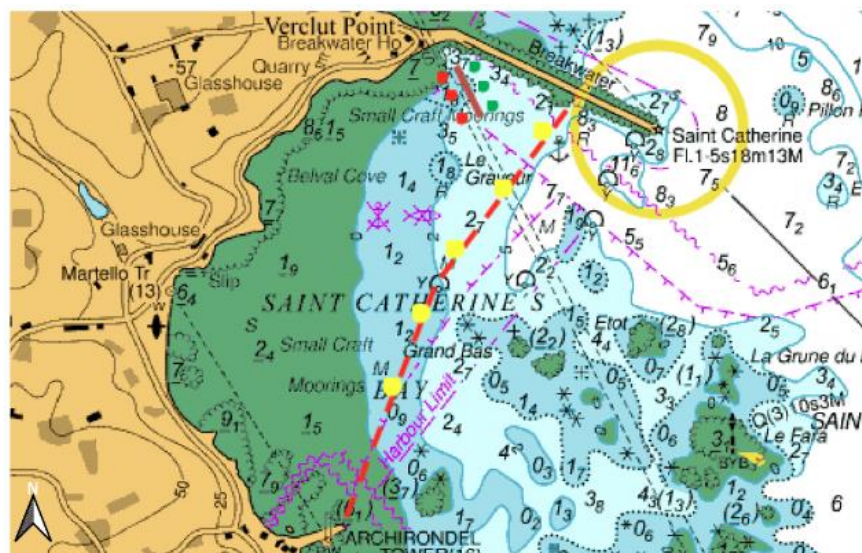
Special Mark Buoys deployed – East Coast
St Catherine's bay

Mariners are advised that the following seasonal buoyage has been deployed in St Catherine's Bay. A line of yellow buoys between St Catherine's Breakwater and Archirondel Breakwater (as depicted on the below chartlet). Vessels operating west of the line marked by these buoys must observe the 5-knot speed limit.

This speed limit will come into force on the 1st May 2024 and will remain in force until 30th September 2024.

Slipway approach channel

Mariners are reminded that an approach channel has been deployed to manage safe access for vessels to and from the slipway through the moorings. The channel is marked by red and green lateral buoys. The chartlet below shows the approximate positions of the buoyage for the approach channel.



The above illustration shows the approximate positions.



Captain Bill Sadler
 Harbour Master, Jersey Harbours
 10th May 2024