

Notice to Mariners № 15 of 2024

Chart BA 3655 - Jersey's South and East Coast

Seabed sampling

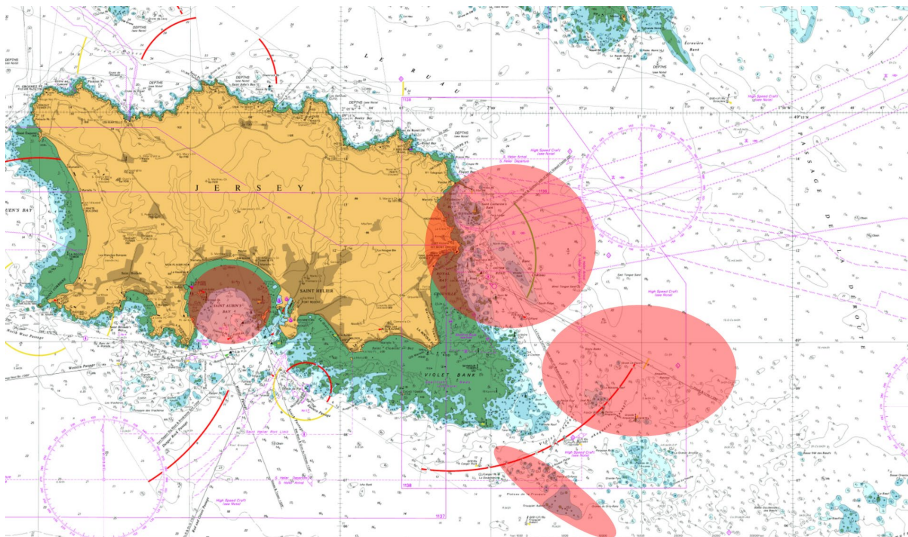
Mariners are advised that the MV Obervargh will be undertaking seabed sampling operations around the south and east coasts of Jersey. Mariners are requested to pass the vessel at a safe speed and distance.

Commencing 12 June for 10 days



MV Obervargh

The chart illustrates the approximate areas where the sampling will be undertaken.



Captain Bill Sadler
Harbour Master, Jersey Harbours
06 June 2024