

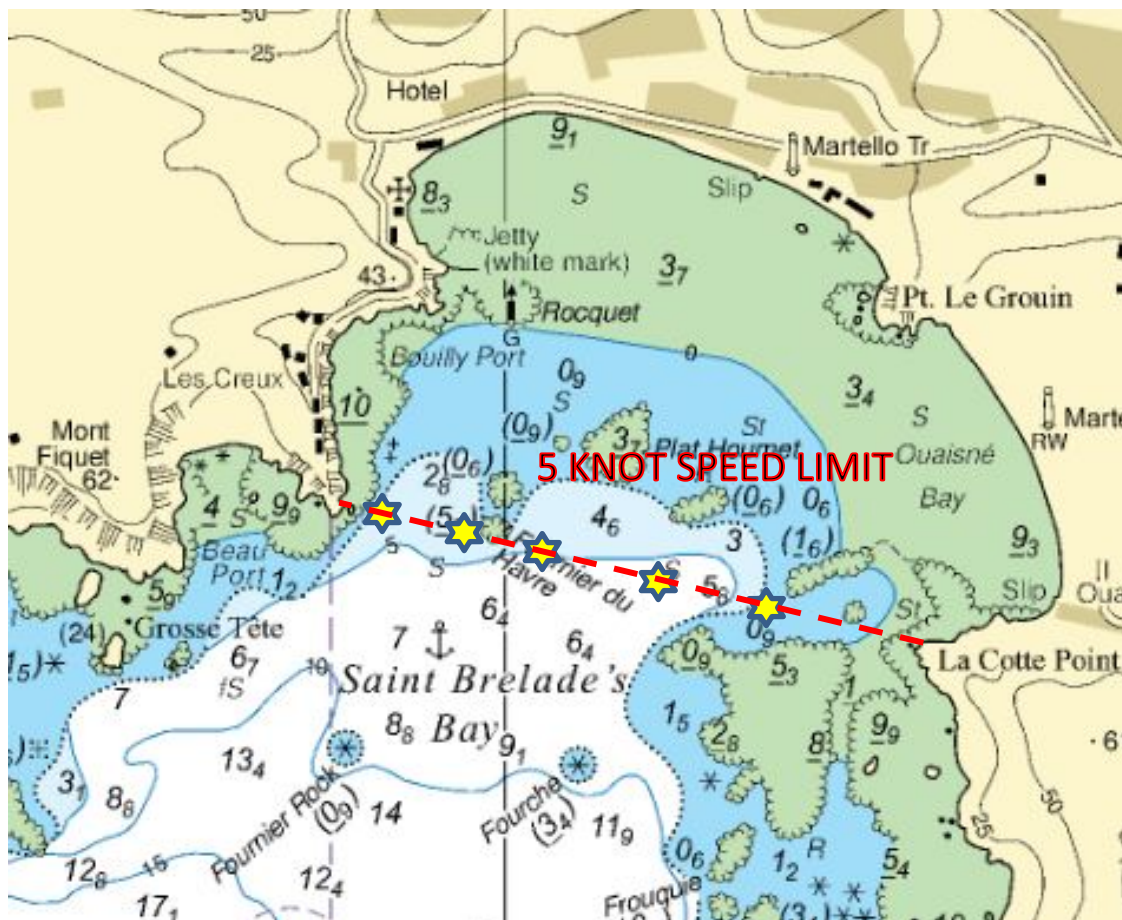
Notice to Mariners № 16 of 2021

Jersey South Coast – St Brelade’s Bay | Chart BA 1137

Special Mark Buoys – 5 knot speed limit

Mariners are advised that a series of five special mark yellow buoys have been laid in the approximate positions in a line between Les Jeteuse Point and La Cotte Point, as shown on the chartlet below. Each large buoy is marked with 5 knots speed limit.

This speed limit comes into force from Friday 2nd July 2021 until Monday 13th September 2021. Vessels operating to the north of the line marked by these buoys must observe the 5 knot speed limit. Failure to do so is a breach of Harbour Master’s General Direction No.1.



© Crown Copyright and/or database rights. Reproduced by permission of the Controller of Her Majesty's Stationery Office and the UK Hydrographic Office (www.ukho.gov.uk).

The above illustration shows the approximate positions and the area to which the 5 knot speed limit will apply.

Ports of Jersey

St Peter, Jersey, JE1 1BY

T +44 (0)1534 447788 E enquiries@ports.je



PORTS OF JERSEY

YOUR ISLAND GATEWAY

A handwritten signature in black ink, appearing to read 'Bill Sadler'.

Captain Bill Sadler
Harbour Master, Jersey Harbours

24th June 2021