

## Notice to Mariners № 16 of 2025

### Jersey – East Coast – BA Chart 1138 & 3655

## Acoustic equipment deployment

Mariners are advised that four subsea acoustic monitoring devices will be deployed off Jersey's east coast from the vessel *Ceres* on 18–19 August.

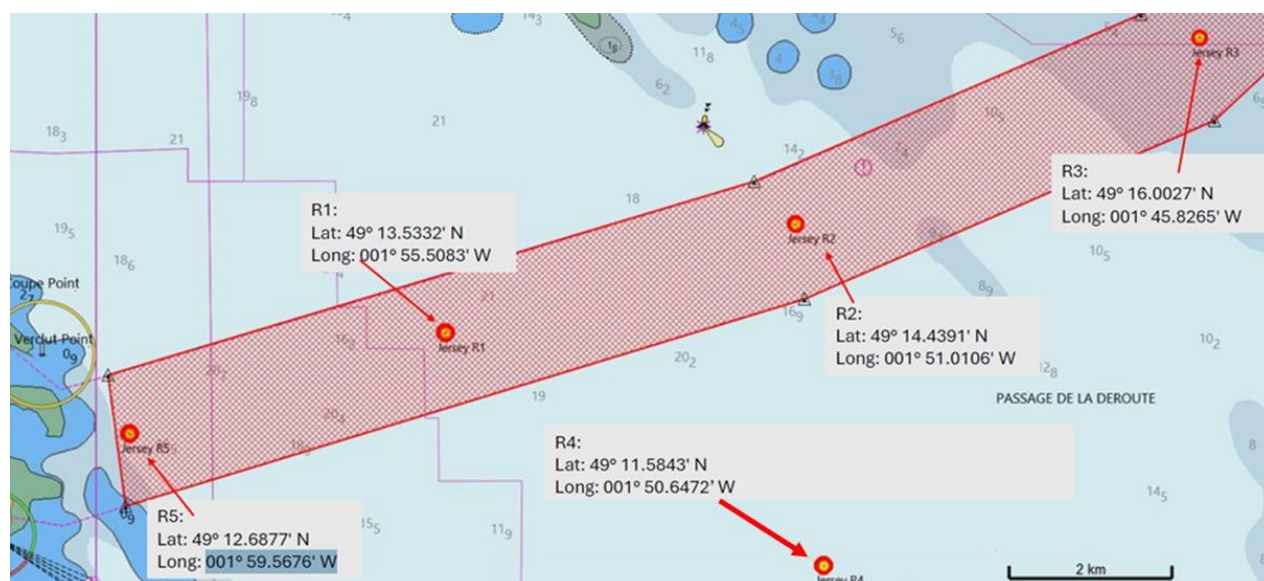
The devices are static on the seabed and have no surface markers. Units will be on station between August 2025 and April 2026.

Deployment positions within Jersey territorial waters are listed below.

Station	Latitude	Longitude
<b>R1</b>	49° 13.5332' N	001° 55.5083' W
<b>R2</b>	49° 14.4391' N	001° 51.0106' W
<b>R4</b>	49° 11.5843' N	001° 50.6472' W
<b>R5</b>	49° 12.6877' N	001° 59.5676' W

Please be advised that R1, R2, and R5 devices will be deployed within a limit of restricted area where anchoring and fishing are prohibited.

Mariners, particularly those operating mobile fishing gear, are strongly advised to maintain a safe distance. The operator recommends a minimum passing clearance of **250 metres** from the deployed devices.





Captain Bill Sadler  
Harbour Master, Jersey Harbours

15th August 2025