



Notice to Mariners № 17 of 2021

Jersey East Coast – Saint Catherine’s Bay | Chart BA 1138

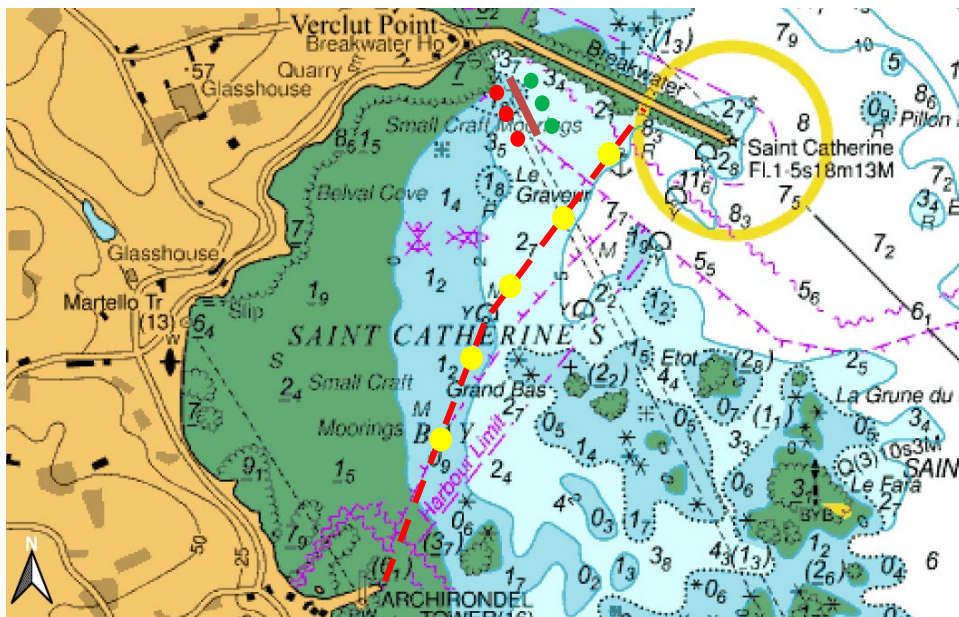
Special Mark Buoys – 5 knot speed limit

Mariners are advised that the following trial seasonal buoyage will be deployed in Saint Catherine’s bay and will come into force Friday 2nd July 2021.

The yellow buoys depicted on the below chartlet are representative positions to be trialled for a second year. Vessels operating west of this line marked by these buoys must observe the 5-knot speed limit.

Slipway approach channel

Mariners are reminded that an approach channel has been deployed to manage safe access for vessels to and from the slipway through the moorings. The channel is marked by red and green lateral buoys. The chartlet below shows the approximate positions of the buoyage for the approach channel.



© Crown Copyright and/or database rights. Reproduced by permission of the Controller of Her Majesty's Stationery Office and the UK Hydrographic Office (www.ukho.gov.uk)

Captain William Sadler
Harbour Master, Jersey Harbours

29th June 2021