

Notice to Mariners Nº 17 of 2025

Jersey South Coast | BA Chart 1138 & 3655

Jersey International Air Display

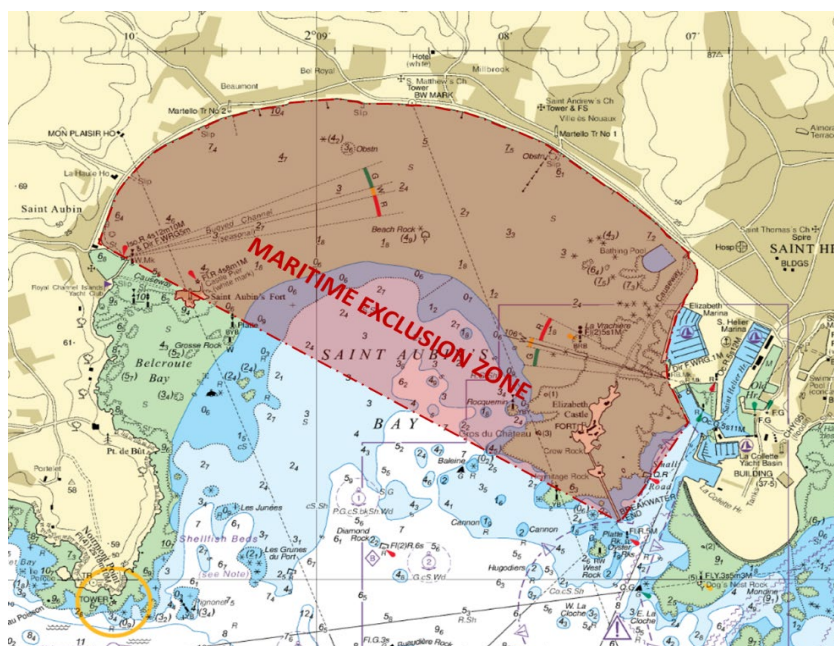
St Aubin's Bay exclusion zone

Established and in force on the following dates and times:

Wednesday 10 September: 12:45 - 17:00

Thursday 11 September: 12:45 - 17:00

Maritime Exclusion Zone: From north of a line between the end of Elizabeth harbour west wall, to the south end of Elizabeth Castle breakwater, thence through St Aubin's Fort to the outer end of St Aubin's harbour south arm.



Mariners are advised that during these times, the following applies:

- Navigation and anchoring are strictly prohibited for all types of watercraft, including Personal Watercraft (PWC) and Jet Skis.
- Sea access to and from Elizabeth Marina, including its approach channel, is prohibited.
- Sea access to and from St Aubin's Harbour, including the outer moorings, is prohibited.

Additional public access restrictions

- Elizabeth Marina western promenade closed to public south of the bronze tree.
- Elizabeth Marina south promenade (Golden Ball) closed to public.
- The beach area between Elizabeth Marina and St Aubin's Harbour will be closed to the public.
- Elizabeth Castle and St Aubin's Fort closed to public during these times.

This exclusion zone is issued as a Notice to Mariners and a Harbour Master's Special Direction under Regulation 3(1)(a) of the Harbours (Jersey) Regulations 1962. Failure to comply with a Harbour Master's Direction is an offence, which carries a fine of up to £10,000 (Level 3)



Captain Bill Sadler
Harbour Master, Jersey Harbours

26 August 2025