



Notice to Mariners No 18 of 2022 Jersey South Coast - BA 1137 Castle to Harbour Swimming Challenge

Castle to Harbour Swim

Mariners are advised that the annual Castle to Harbour swimming challenge is due to take place on:

Sunday 18th September 2022

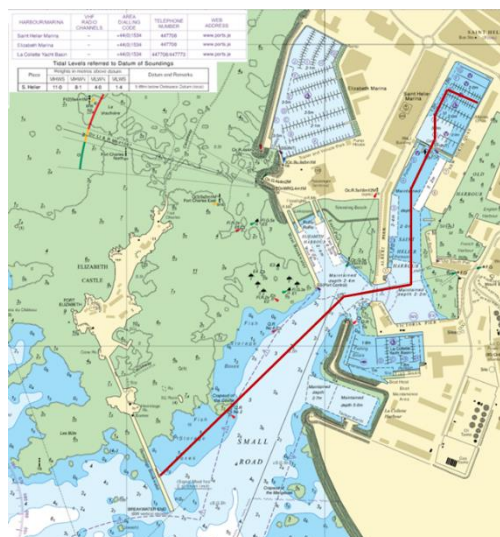
The swim begins at **0945 LT** and is expected to finish by **1115LT**

The course starts at Elizabeth Castle breakwater and routes down the small roads, through the harbour pier heads and finishes in St Helier marina.

The harbour and St Helier Marina will be temporarily **closed** for the event.

St Helier VTS will broadcast a navigational warning.

Swimmers will be supported by guard vessels at all times.



Mariners are requested to transit the small roads with caution between 0940 – 1015, observe the IALA lights at all times and should request any updates on the swim and harbour opening times from St Helier VTS on VHF Ch14.

This notice remains in force until 2359 on Sunday 18th September 2022

Captain Bill Sadler
Harbour Master, Jersey Harbours

15 September 2022