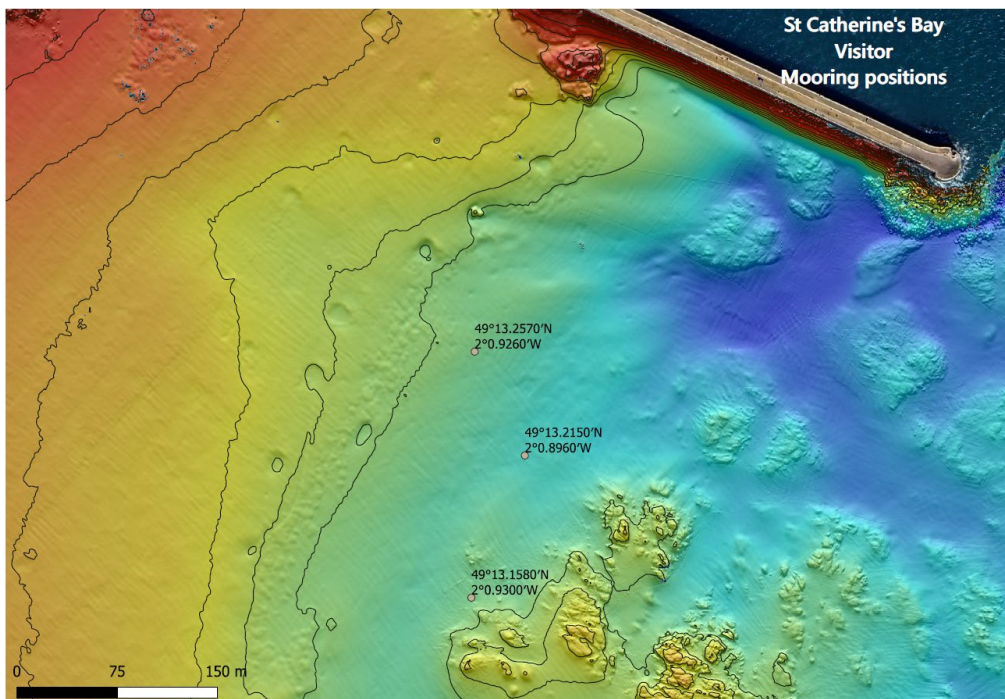


Notice to Mariners № 20 of 2024
Chart BA 1138 Jersey's East Coast

Visitor moorings deployed in St Catherine's Bay

Mariners are advised of three new seasonal visitor moorings which have been deployed in St Catherine's Bay.

The buoys are white in colour, two of the three buoys (most Northerly and most Southerly) are lit internally to be visible in times of darkness.



Positions of the buoys are:

049° 13.257' N 002° 00.926' W

049° 13.215' N 002° 00.896' W

049° 13.158' N 002° 00.930' W



Captain Bill Sadler
Harbour Master, Jersey Harbours

22 July 2024