

Notice to Mariners N° 21 of 2025

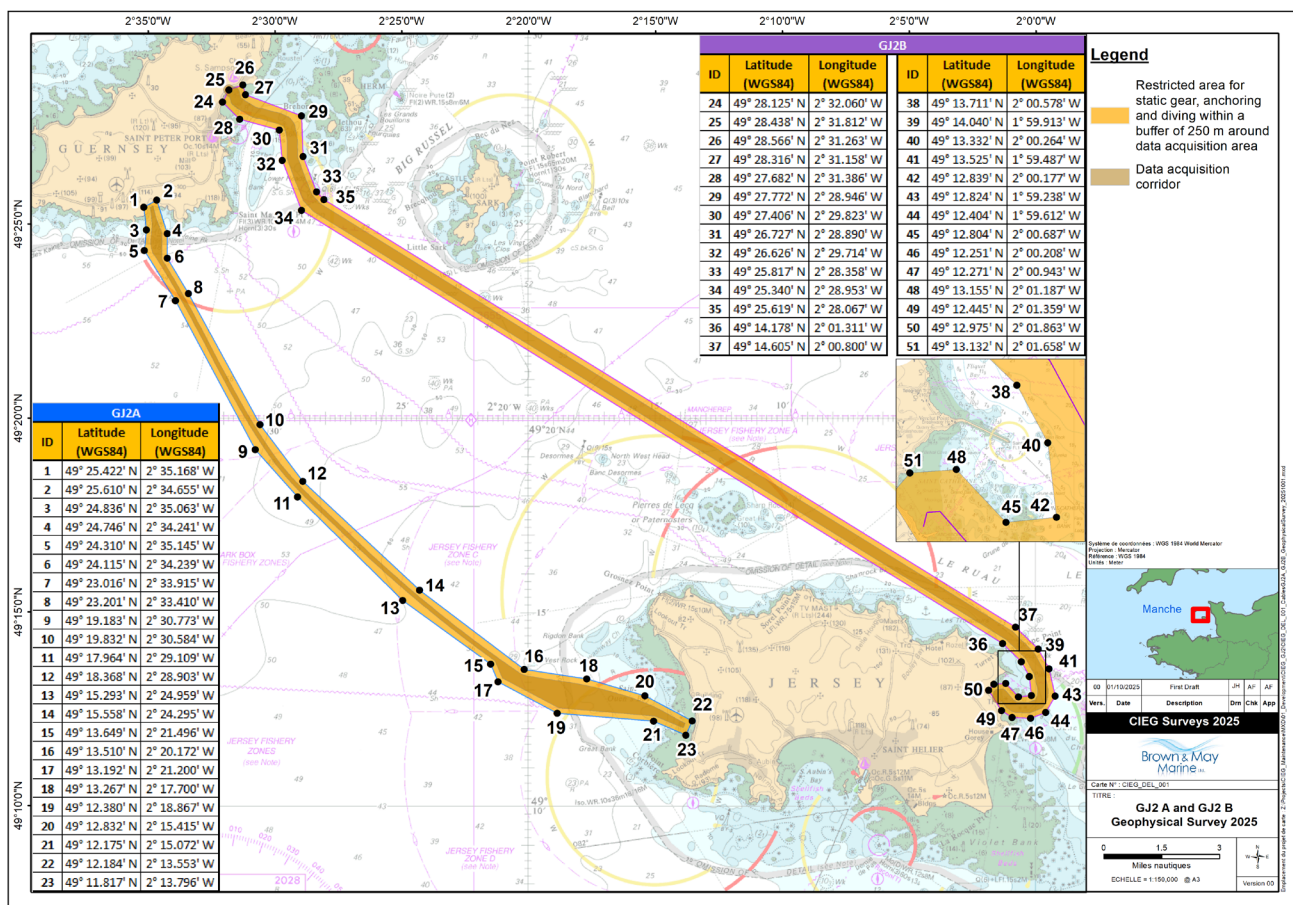
Channel Islands and adjacent coast of France – BA Chart 2669

Geophysical and Archaeological Survey

The vessel CERES 3 will be conducting a geological and archaeological survey on behalf of the Channel Island Electricity Grid Ltd. The vessel will be using towed equipment along two proposed cable routes from Thursday 2 October 2025 for approximately two weeks.

Mariners are advised:

- not to deploy static fishing gear, anchor or conduct diving within 250 metres from routes GJ2a and GJ2b
- respect a 500 metre safety zone around Survey Vessel CERES 3 when conducting operation.



Bill Sadler

Captain Bill Sadler

Harbour Master, Jersey Harbours

2 October 2025

Ports of Jersey, St Peter, Jersey, JE1 1BY +44 (0)1534 446100

Charts | © Crown Copyright and/or database rights. Reproduced by permission of The Keeper of Public Records and the UK Hydrographic Office (www.GOV.uk/UKHO).

ports.je