

**Notice to Mariners № 25 of 2023**  
**Jersey South Coast - BA 1137**

## Data Buoys

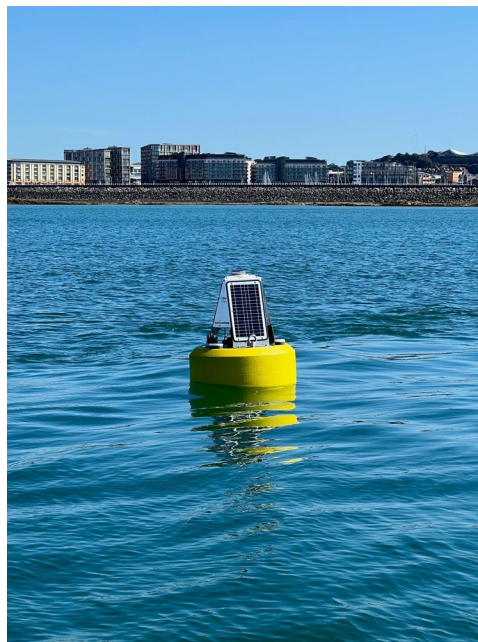
Mariners are advised that two yellow data buoys have been deployed in positions:

49° 10.799' N    002° 07.960' W  
NW of Elizabeth Castle

49° 09.92' N    002° 06.596' W  
SE of Dog's Nest Beacon

The buoys are equipped with yellow flashing lights that activate during hours of darkness.

They serve the purpose of collecting data and are fitted with specialised equipment therefore it is prohibited to moor up to these buoys at any time.



Captain Bill Sadler  
Harbour Master, Jersey Harbours

15.09.2023