



Notice to Mariners No 27 of 2021
Jersey North Coast - BA 3278
Castle to Harbour Swimming Challenge

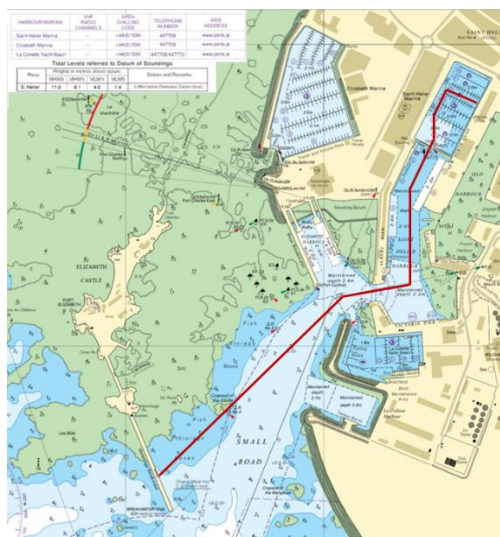
Castle to Harbour Swim

Mariners are advised that the annual Castle to Harbour swimming challenge is due to take place on:

Sunday 26th September

The swim begins at **0915 LT** and is expected to finish by **1030 LT**

The course starts at Elizabeth Castle breakwater and routes down the small roads, through the harbour pier heads and finishes in St Helier marina north of D pontoon.



Not to be used for navigation

The harbour and St Helier Marina will be temporarily closed for the event. St Helier VTS will broadcast a navigational warning.

Swimmers will be supported by guard vessels at all times.

Mariners are requested to transit the small roads with caution between 0915 – 0945, observe the IALA lights at all times and should request any updates on the swim and harbour opening times from St Helier VTS on VHF Ch14.

This notice remains in force until 2359 on Sunday 26th September 2021

Captain Bill Sadler
Harbour Master, Jersey Harbours

24 September 2021