

## Notice to Mariners № 6 of 2025

### Chart BA 1138 - Jersey's East Coast

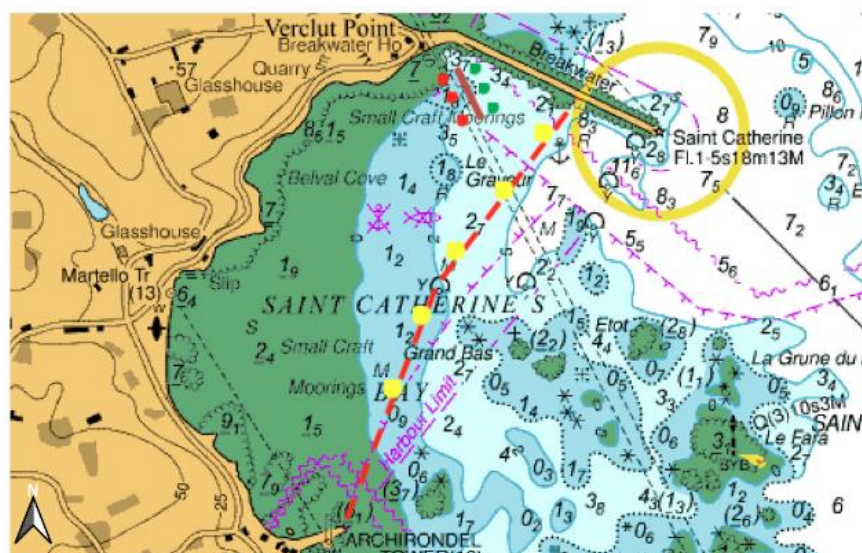
#### Special Mark Buoys deployed – East Coast St Catherine's bay

Mariners are advised that the following seasonal buoyage has been deployed in St Catherine's Bay. A line of yellow buoys between St Catherine's Breakwater and Archirondel Breakwater (as depicted on the below chartlet). Vessels operating west of the line marked by these buoys must observe the 5-knot speed limit.

This speed limit will come into force on the 1<sup>st</sup> May 2025 and will remain in force until 30<sup>th</sup> September 2025.

#### Slipway approach channel

Mariners are reminded that an approach channel has been deployed to manage safe access for vessels to and from the slipway through the moorings. The channel is marked by red and green lateral buoys. The chartlet below shows the approximate positions of the buoyage for the approach channel.



The above illustration shows the approximate positions.



Captain Bill Sadler  
Harbour Master, Jersey Harbours  
14<sup>th</sup> May 2025

Ports of Jersey, St Peter, Jersey, JE1 1BY +44 (0)1534 446100

[ports.je](https://ports.je)

Charts | © Crown Copyright and/or database rights. Reproduced by permission of The Keeper of Public Records and the UK Hydrographic Office ([www.GOV.uk/UKHO](http://www.GOV.uk/UKHO)).