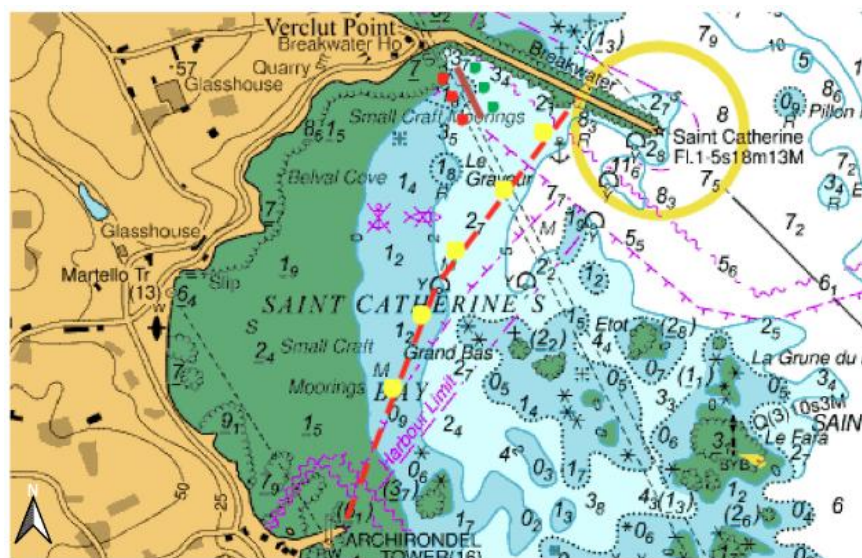


Notice to Mariners No 7 of 2026
Chart BA 1138 - Jersey's East Coast

Special Mark Buoys deployed – East Coast
St Catherine's bay

Mariners are advised that the following seasonal buoyage has been deployed in St Catherine's Bay. A line of yellow buoys between St Catherine's Breakwater and Archirondel Breakwater (as depicted on the below chartlet). Vessels operating west of the line marked by these buoys must observe the 5-knot speed limit.

This speed limit will come into force on the 3rd June 2026 and will remain in force until 30th September 2026.



The above illustration shows the approximate positions.



Captain Bill Sadler
 Harbour Master, Jersey Harbours
 2nd June 2026