

Notice to Mariners № 8 of 2025

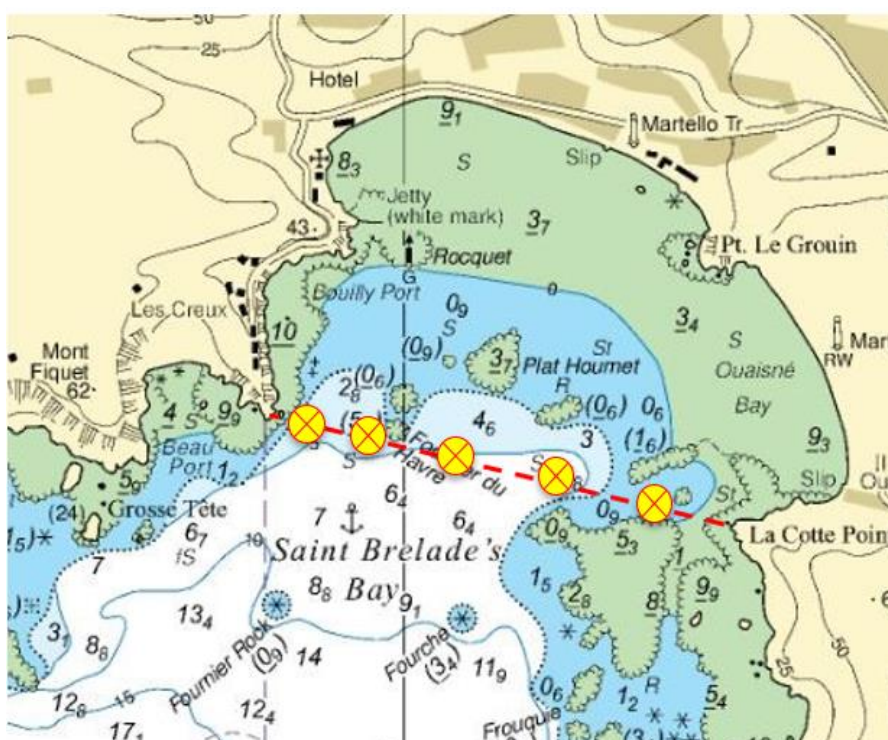
Chart BA 1137 – Approaches to St Helier

Special Mark Buoys deployed – South Coast St Brelade's Bay

Mariners are advised that a series of Special Mark Buoys have been deployed in a line between Les Jeteuse Point and La Cotte Point, as shown on the chartlet below.

Vessels operating north of the line marked by these buoys must observe the 5-knot speed limit.

This speed limit will come into force on the 01st June 2025 and will remain in force until 30th September 2025.



The above illustration shows the approximate positions



Captain Bill Sadler
Harbour Master, Jersey Harbours
29th May 2025