



## PERMANENT NOTICE TO MARINERS N°14 Plateau Des Minquiers Sandbanks

- Mariners are advised that the sandbanks located to the west of the Jetée des Fontaines are very mobile, constantly building and shifting.
- They are known to encroach from time to time on the recognised transit into the reef from the north.
- It is not possible to accurately survey and chart these constantly mobile banks, therefore mariners are advised to navigate this area with caution.

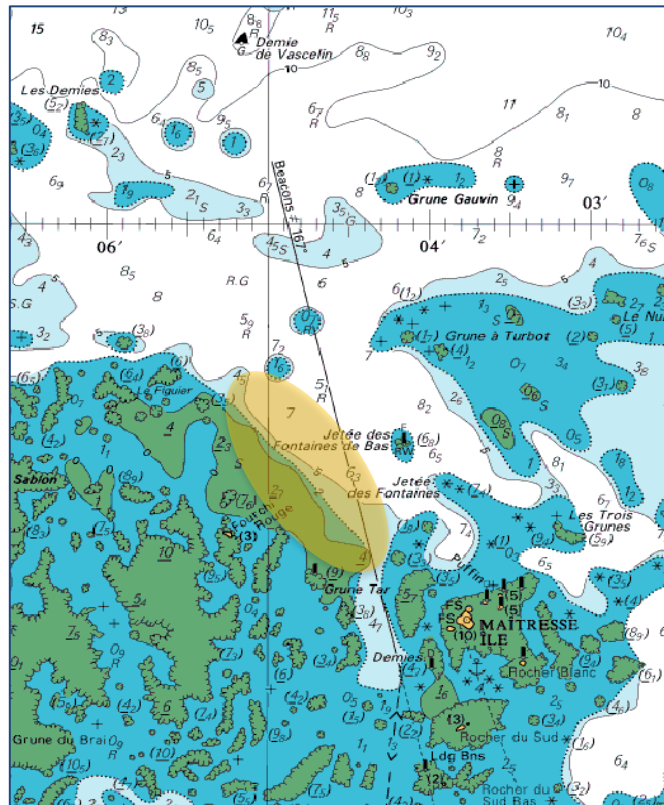


Fig.1 | Chartlet depicting location of sandbanks concerned which have been highlighted by a yellow circle

**Captain William Sadler**  
**Harbour Master**  
16 December 2020