

St Helier Harbour

2019 Q2 Survey Summary Report



Maritime House,
St Helier, Jersey, JE1 1HB
Tel: +44 (0)1534 447747
Email: marineservices@ports.je
Website: www.marineservices.je

Contents

Introduction:	2
Results.....	5
The Main harbour	5
East and West Berth.....	9
Southern Harbour Extent.....	11
Elizabeth Marina	14

List of Figures

Figure 1: January 2019 harbour survey bathymetric data set.....	4
Figure 2 Main Harbour Overview	
Figure 3 Northern end of the Main Harbour	6
Figure 4 Southern end of the Main Harbour	7
Figure 5 Cloud image of Albert Number 3 Berth pocket	8
Figure 6 Survey of the Small Roads South of the East and West Berths during ploughing operations..	9
Figure 7 East and West Berth Basins	10
Figure 8 Cloud image of the southern end of the West Berth.....	10
Figure 9 Small Roads approaching the harbour including the Tanker Berth	11
Figure 10 Tanker Berth and La Collette Yacht Basin	12
Figure 11 Overview of the Tanker Berth.....	13
Figure 12 Tanker Berth, compressed colour scale.....	13
Figure 13 Approaches to the Elizabeth Marina	14
Figure 14 The west wall of Elizabeth Marina	15

Disclaimer: The acquired data, information and any interpretation contained in this report has been compiled with due care and diligence. However, Ports of Jersey Limited gives no guarantee that the information provided is without error.

Introduction:

St Helier Harbour is routinely surveyed as part of Ports of Jersey's conservancy policy and in adherence to the recommendations of the Port Marine Safety Code. Monitoring surveys are completed regularly as part of routine maintenance. The following report gives a summary the works completed throughout the year so far.

The survey works were completed by the Marine Services team utilising the Ports of Jersey pilot vessel 'Rival'. Equipped with an Multibeam Echosounder capable of achieving swath widths of up to eight times water depth, this allows for detailed surveys with full coverage of the seabed.

An Inertial Navigation System provides motion compensation and accurate positioning, supported by a Realtime Kinematic DGPS correction. This allows positioning to be achieved to centimetre precision.

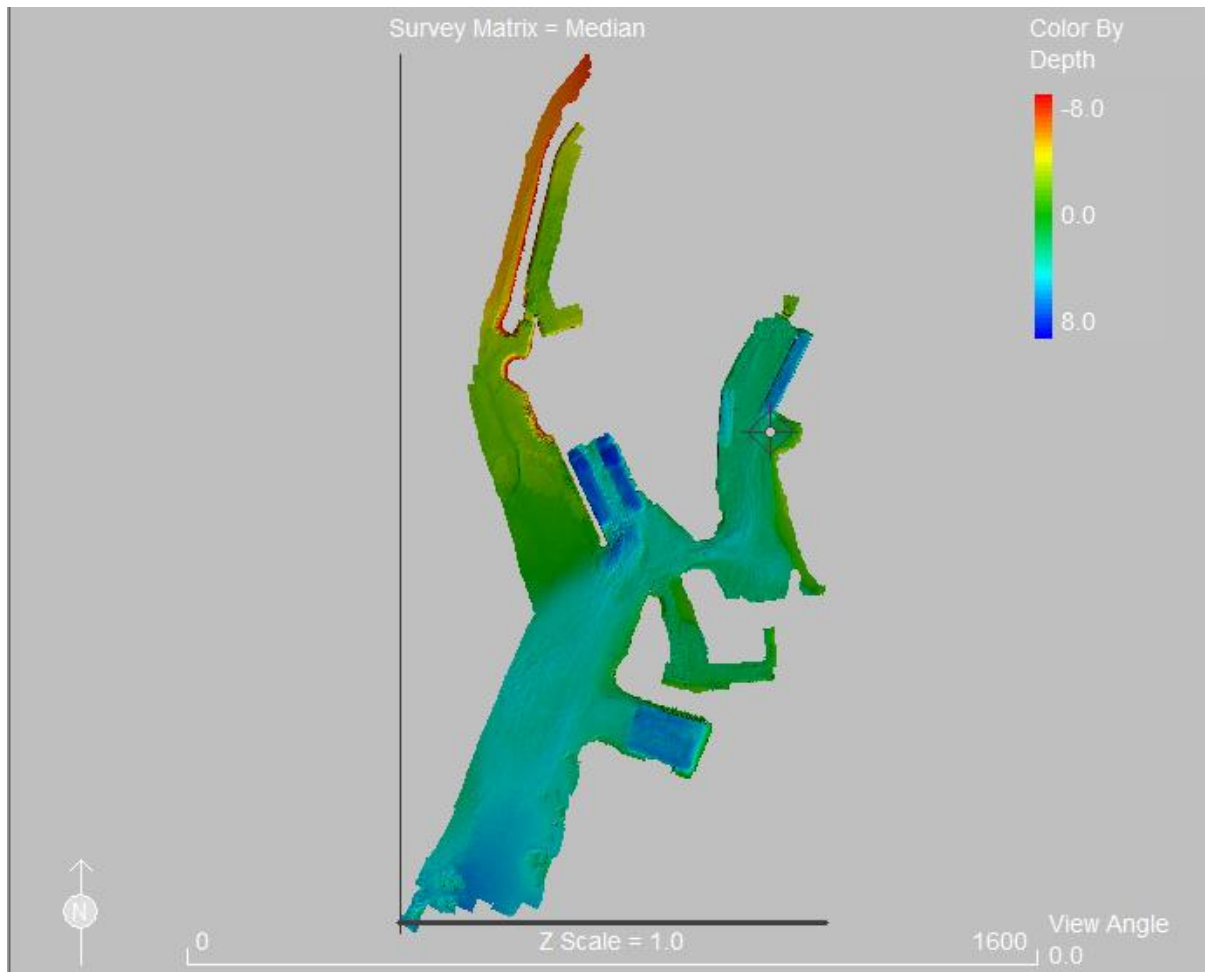


Figure 1: January 2019 harbour survey bathymetric data set.

Results

The Main Harbour

The below images show a more detailed view of the Main Harbour.

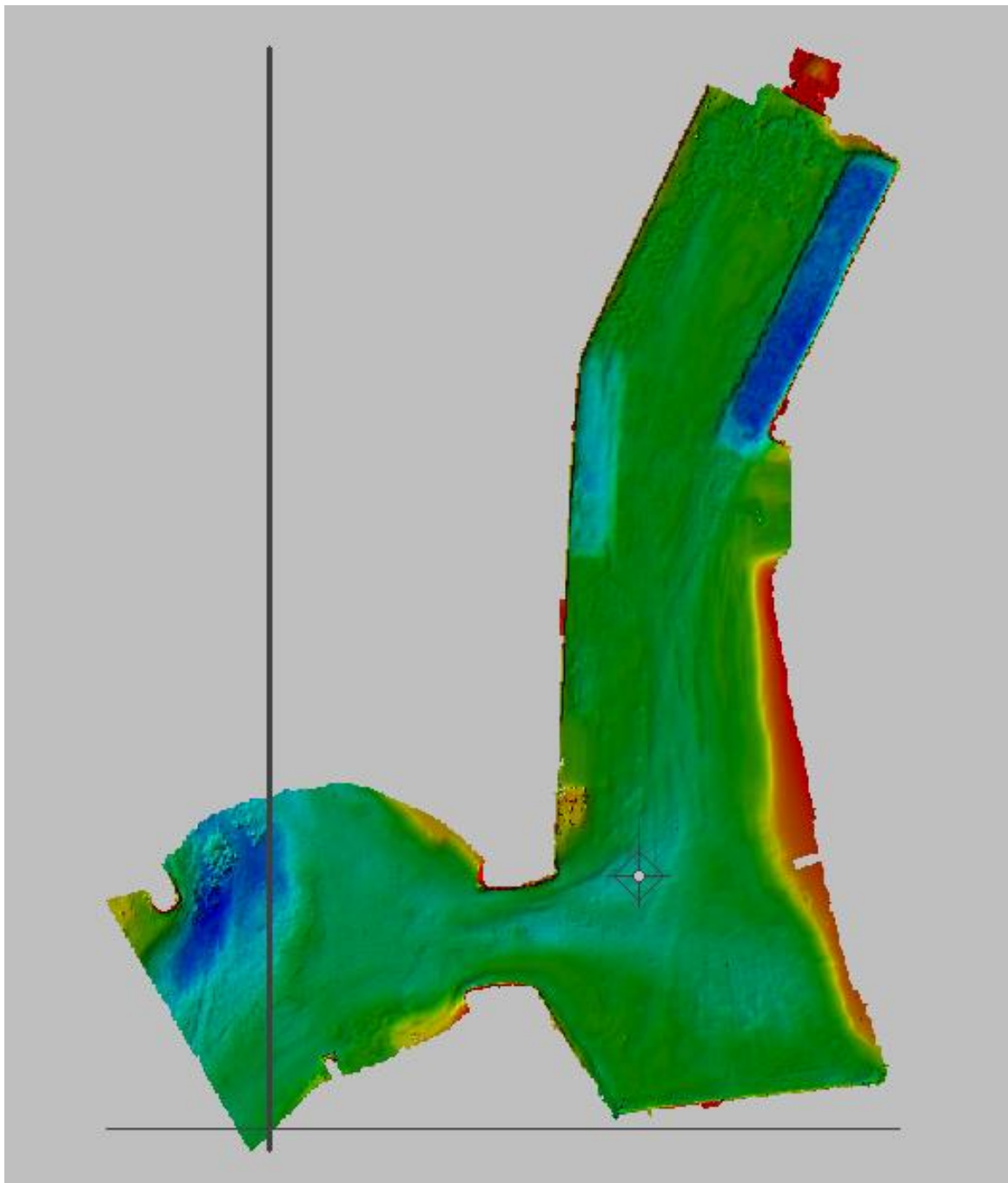


Figure 2: Main Harbour Overview

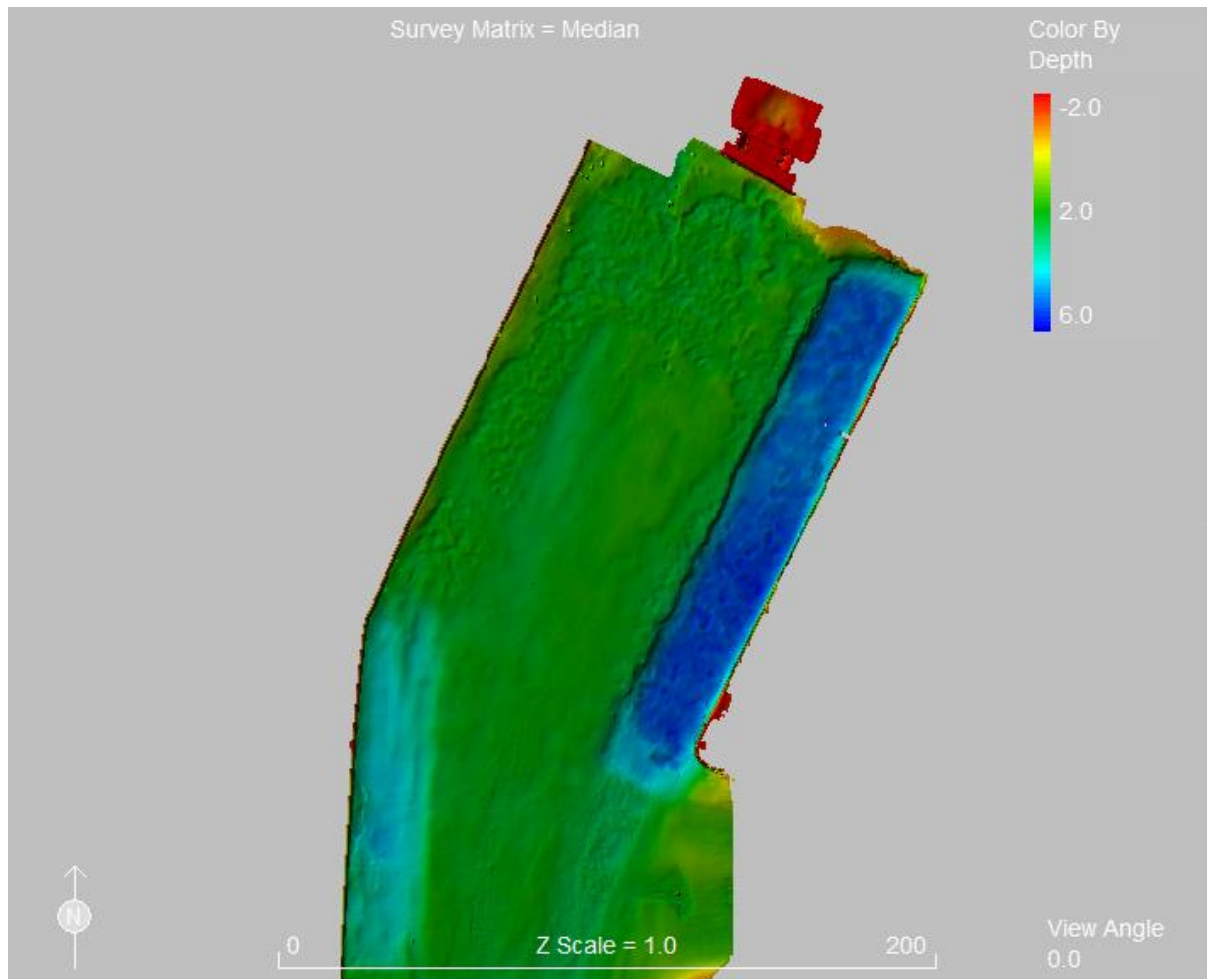


Figure 3: Northern end of the Main Harbour

- Note - St Helier Marina soundings have not been adjusted to reflect pond level.

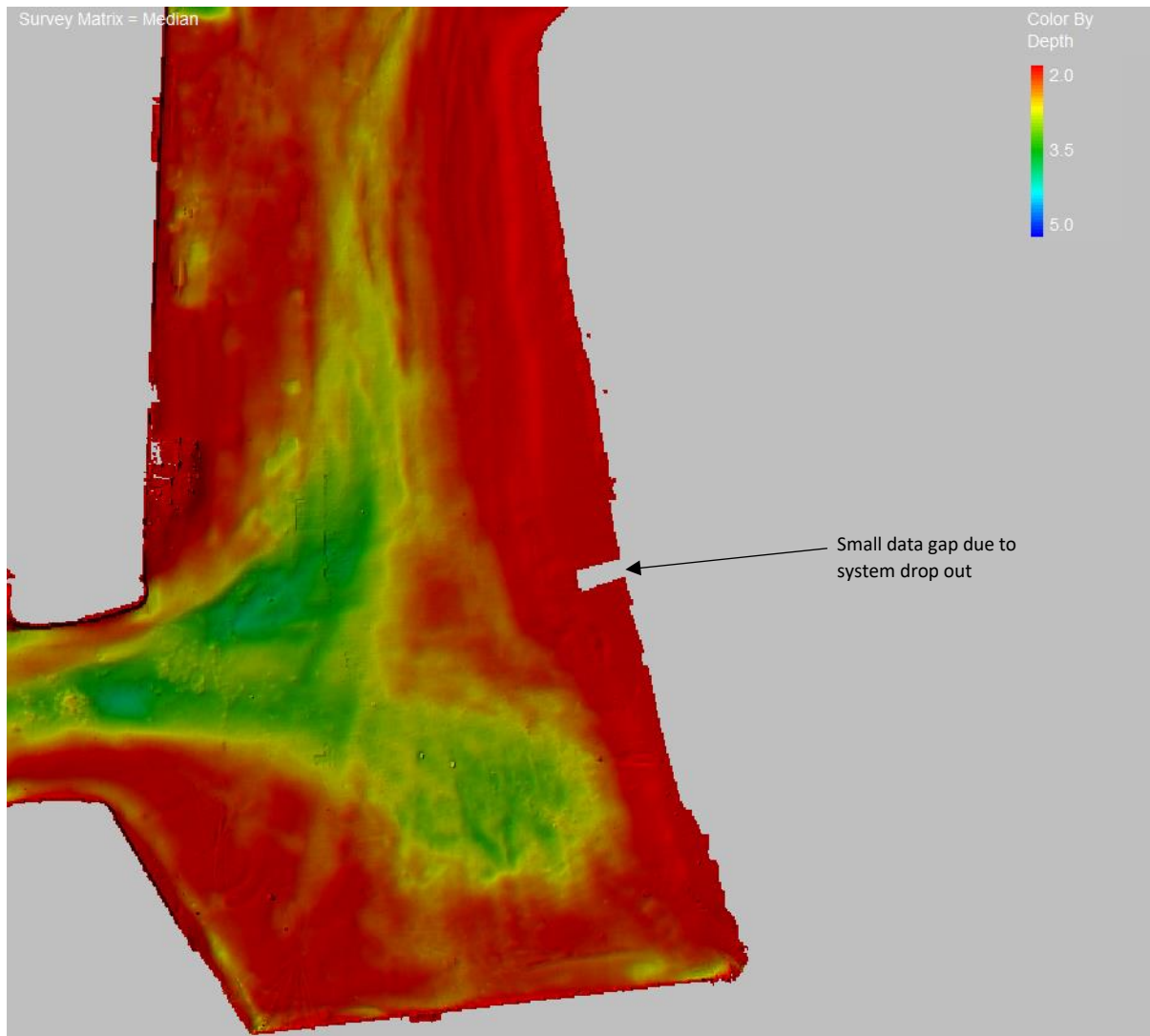


Figure 4 Southern end of the Main Harbour

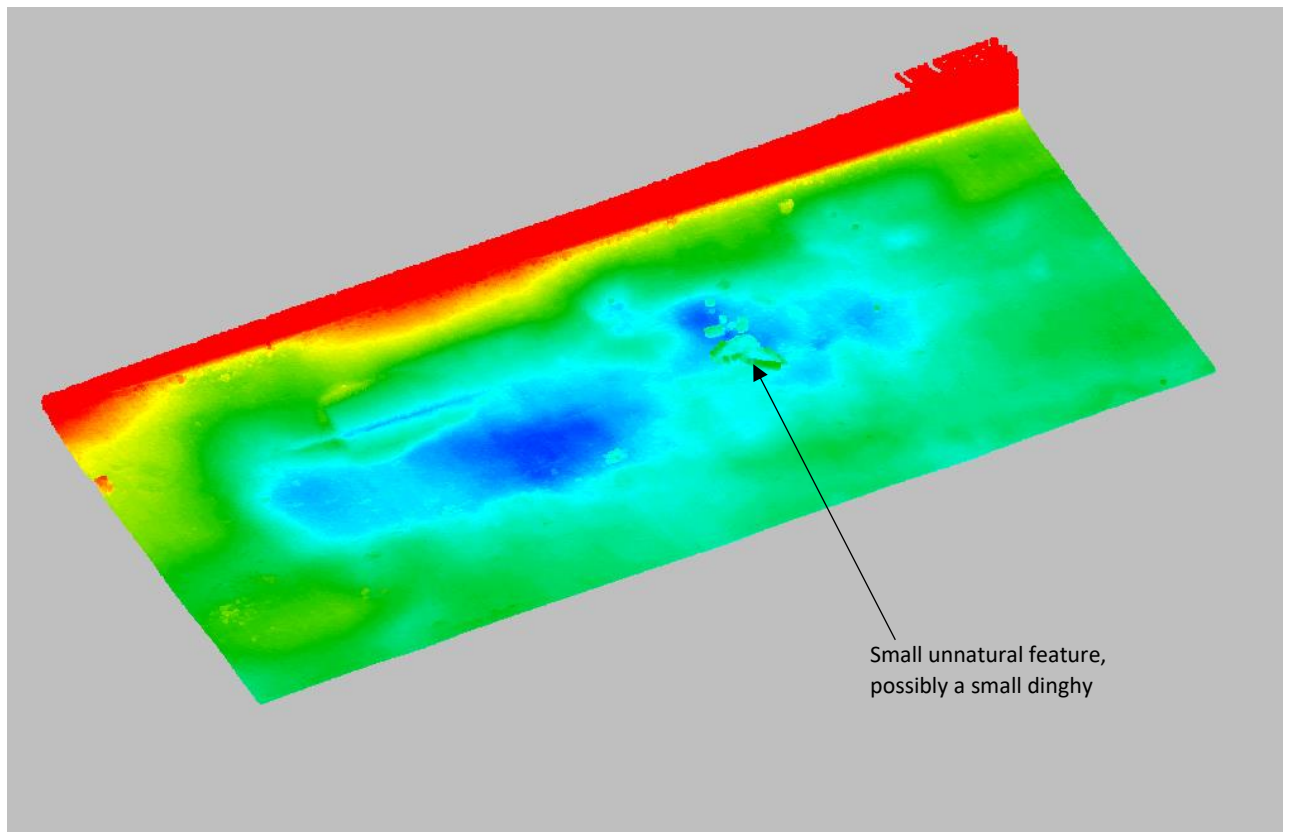


Figure 5 Cloud image of Albert Number 3 Berth pocket

Elizabeth East and West Berths

The Small Road to the south of the Elizabeth East and West Berths are regularly monitored to ensure the chartered depth is maintained. Ploughing operations were completed by the Duke of Normandy in April 2019 to increase the depth of a shoaled area.

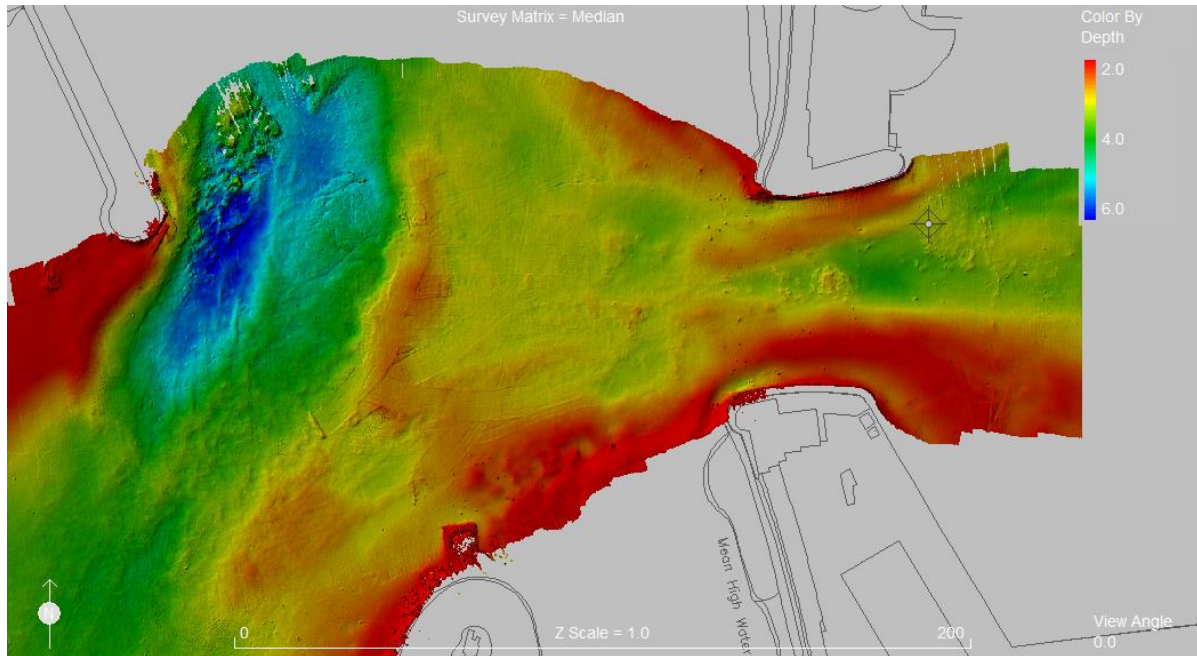


Figure 6 Survey of the Small Roads south of the East and West Berths during ploughing operations.

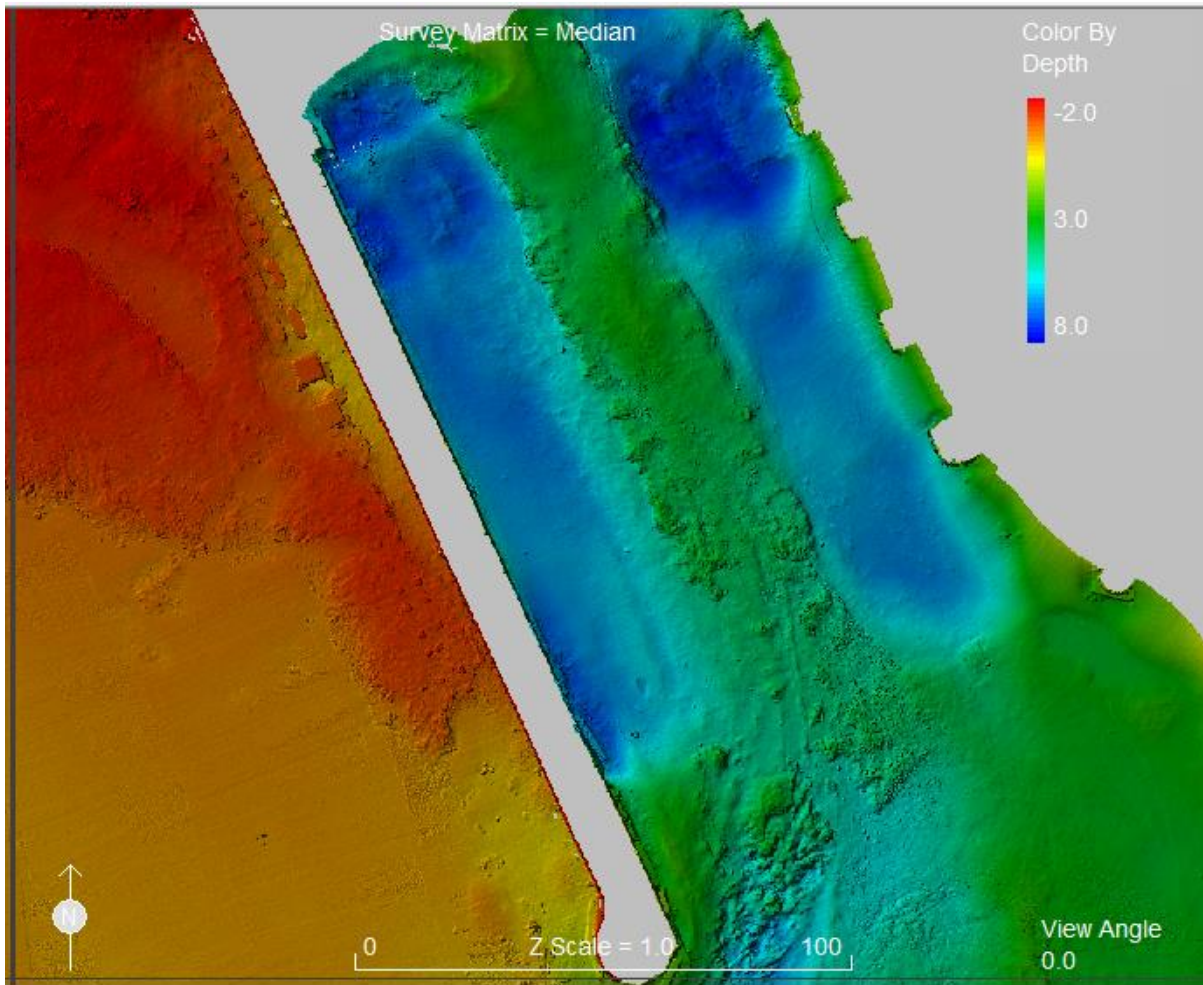


Figure 7 East and West Berth Basins

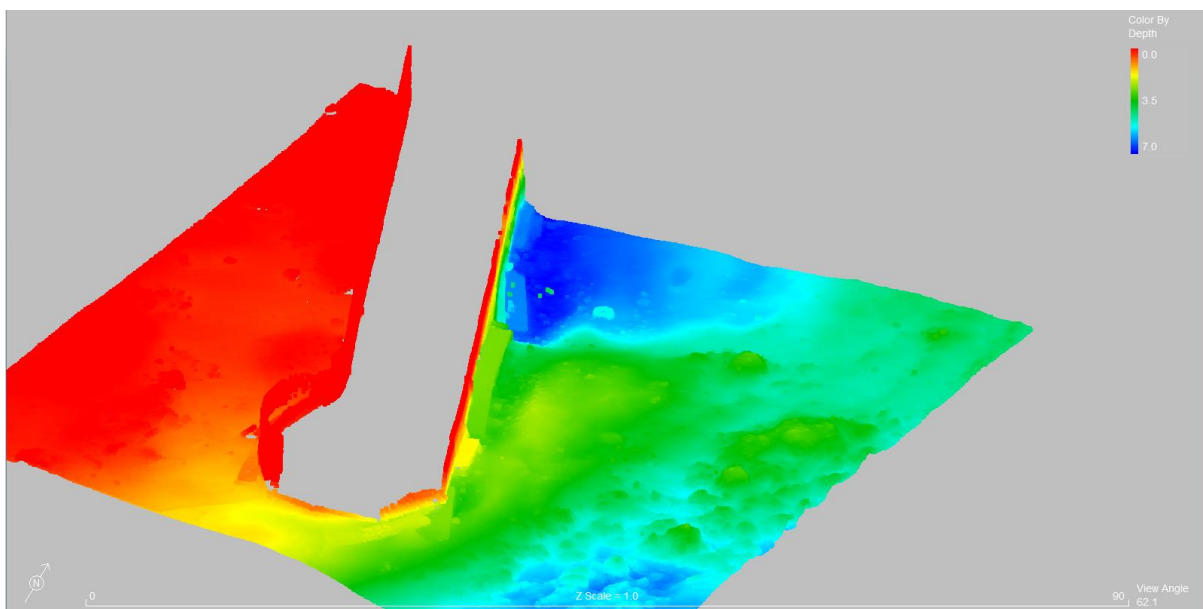


Figure 8 Cloud image of the southern end of the West Berth

Small Road and Southern Harbour Extent

Tanker Berth and La Collette Yacht Basin

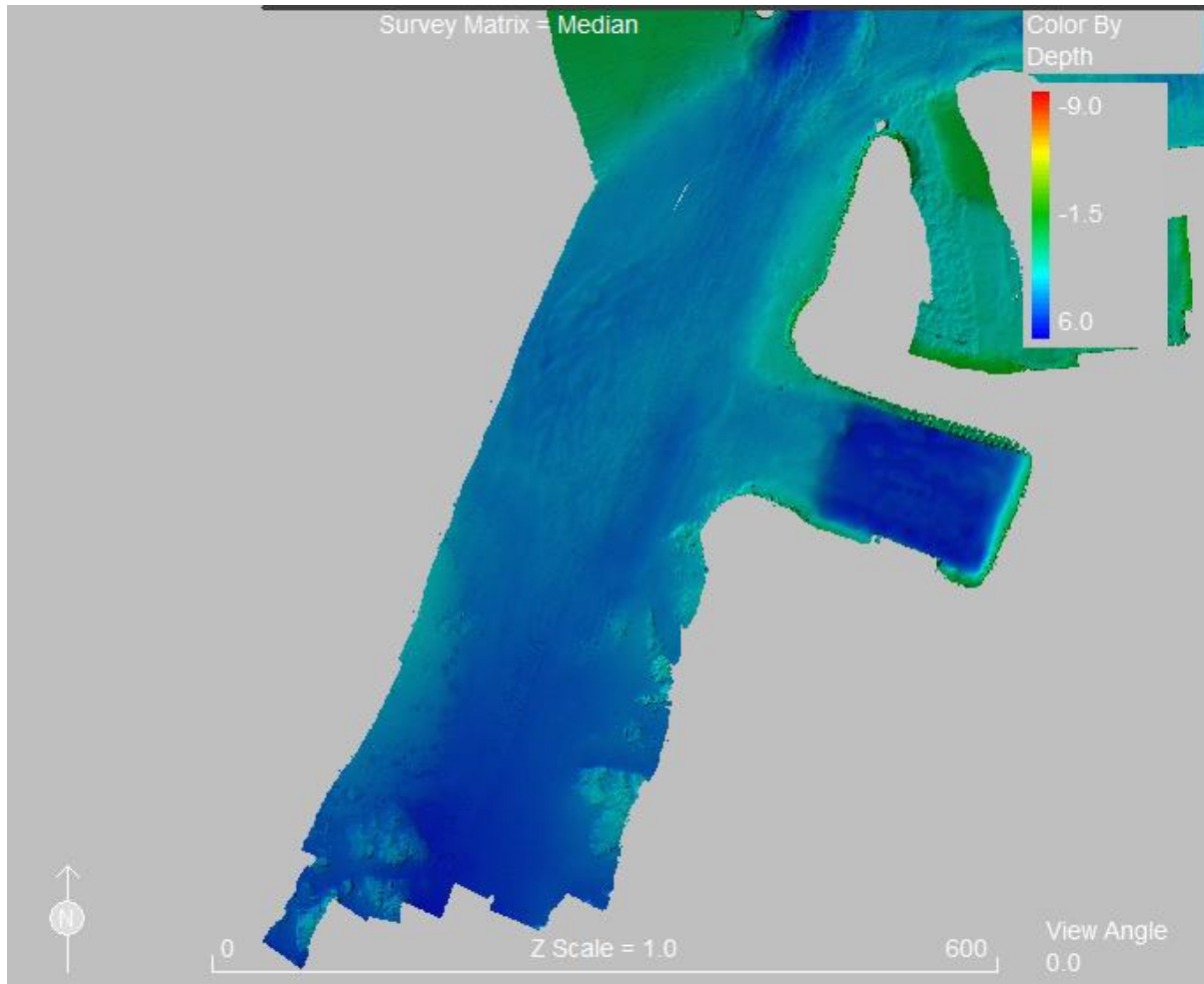


Figure 9 Small Roads approaching the harbour including the Tanker Berth

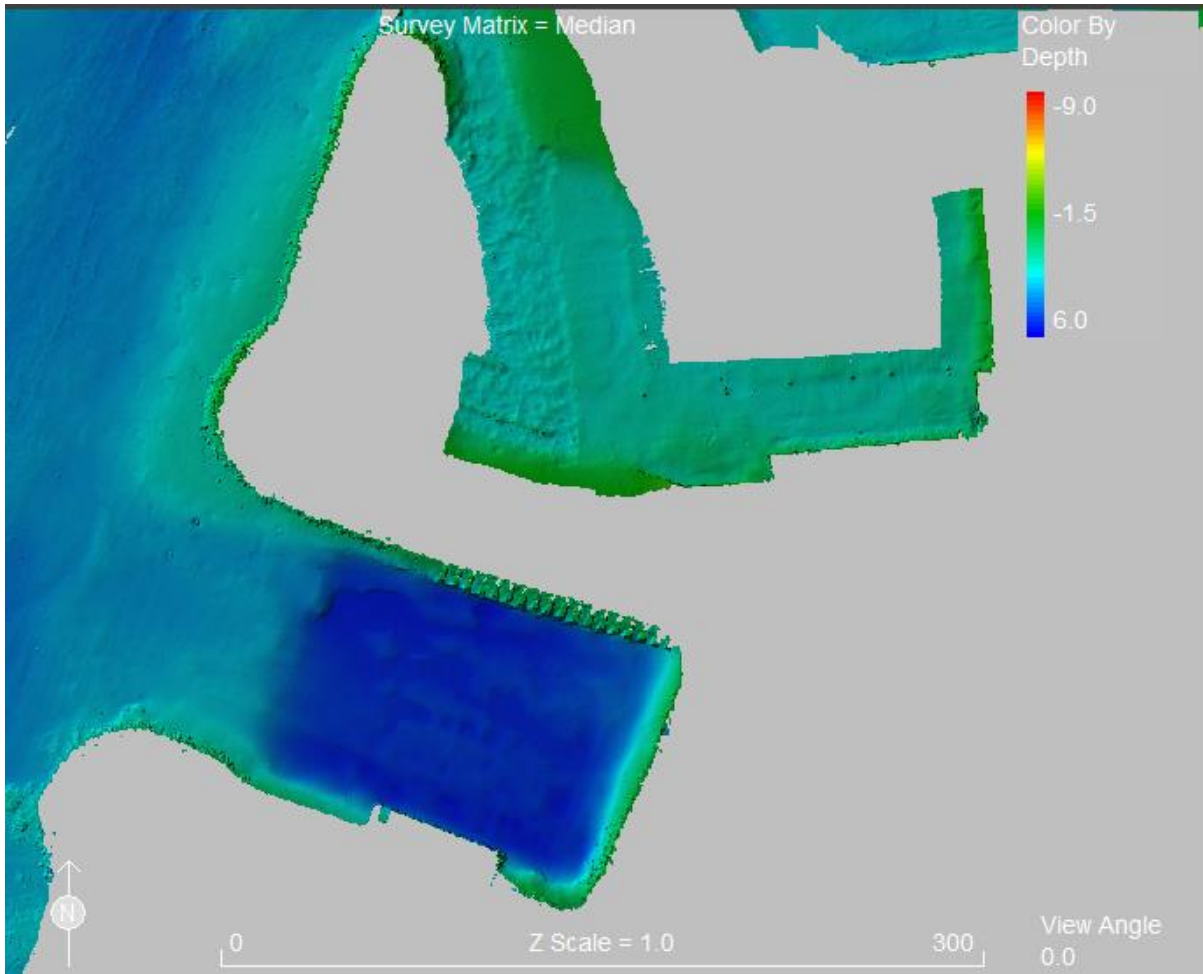


Figure 10 Tanker Berth and La Collette Yacht Basin

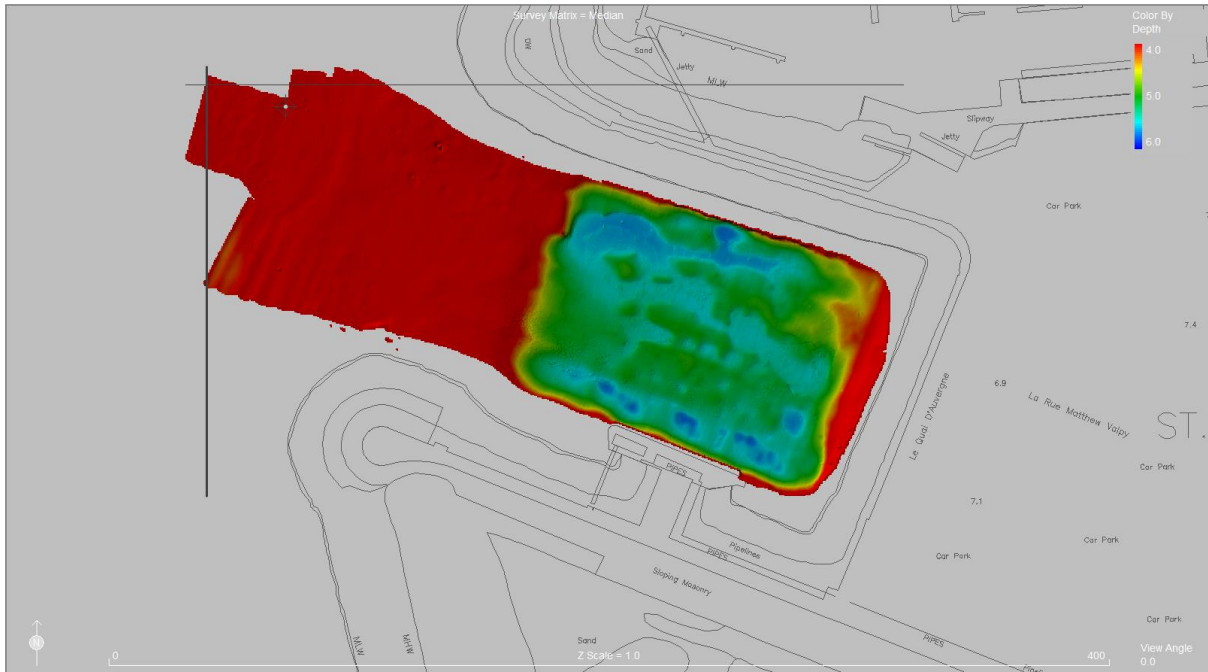


Figure 11 Overview of the Tanker Berth

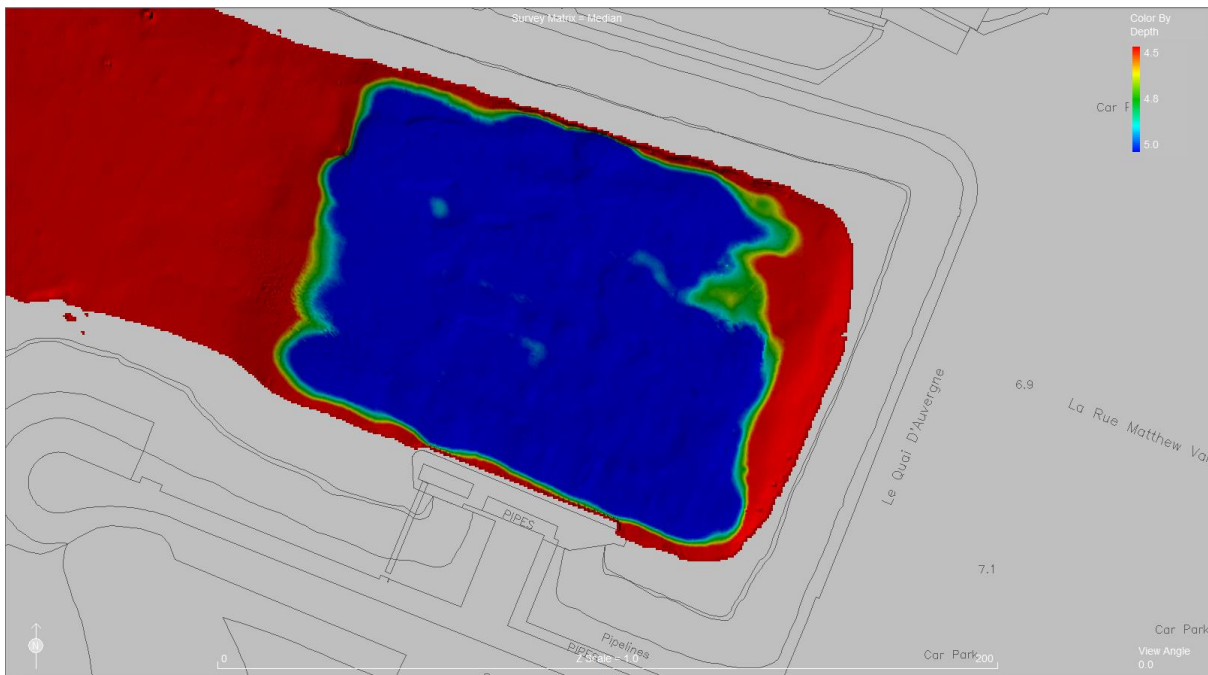


Figure 12 Tanker Berth, compressed colour scale

Elizabeth Marina

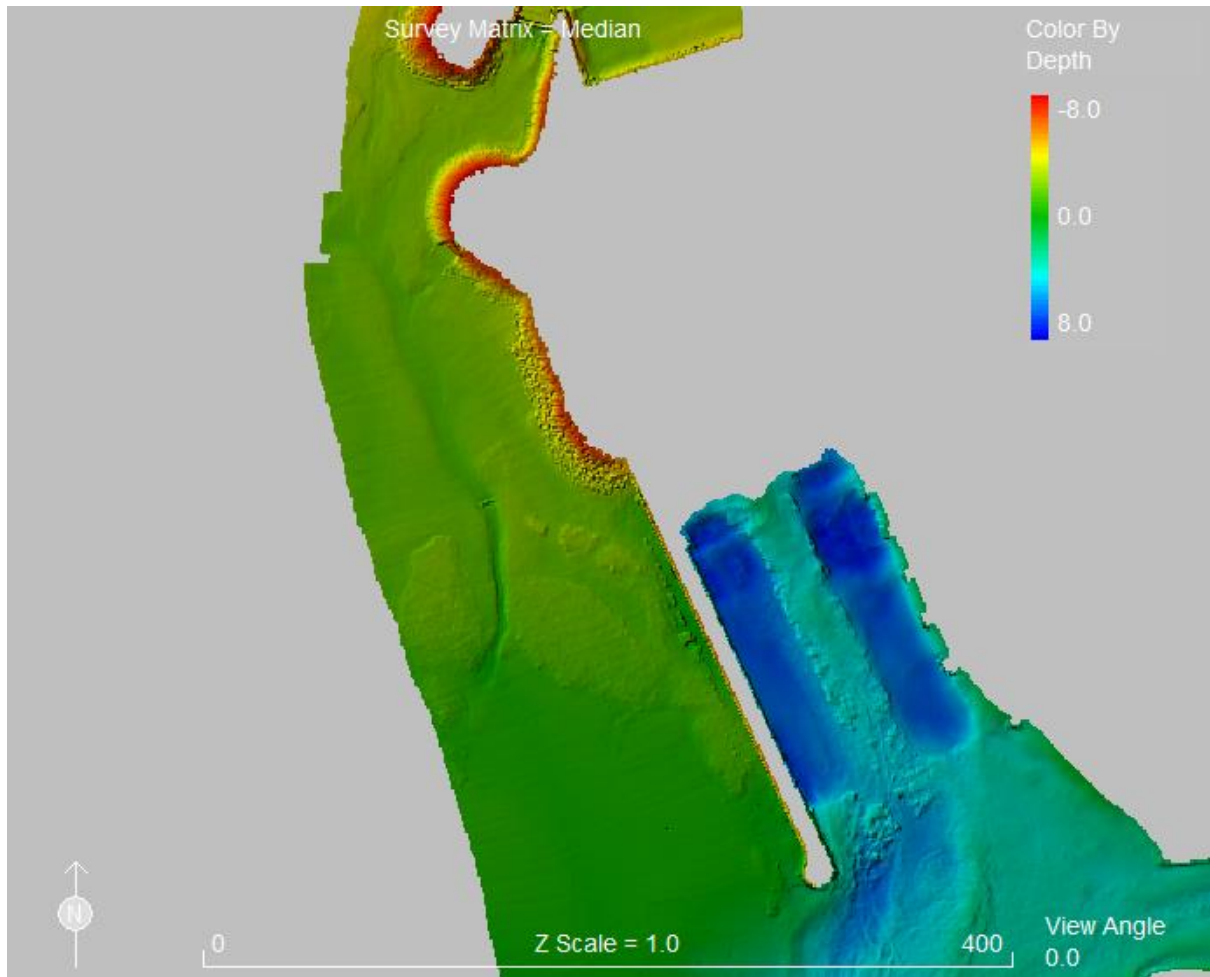


Figure 13 Approaches to the Elizabeth Marina

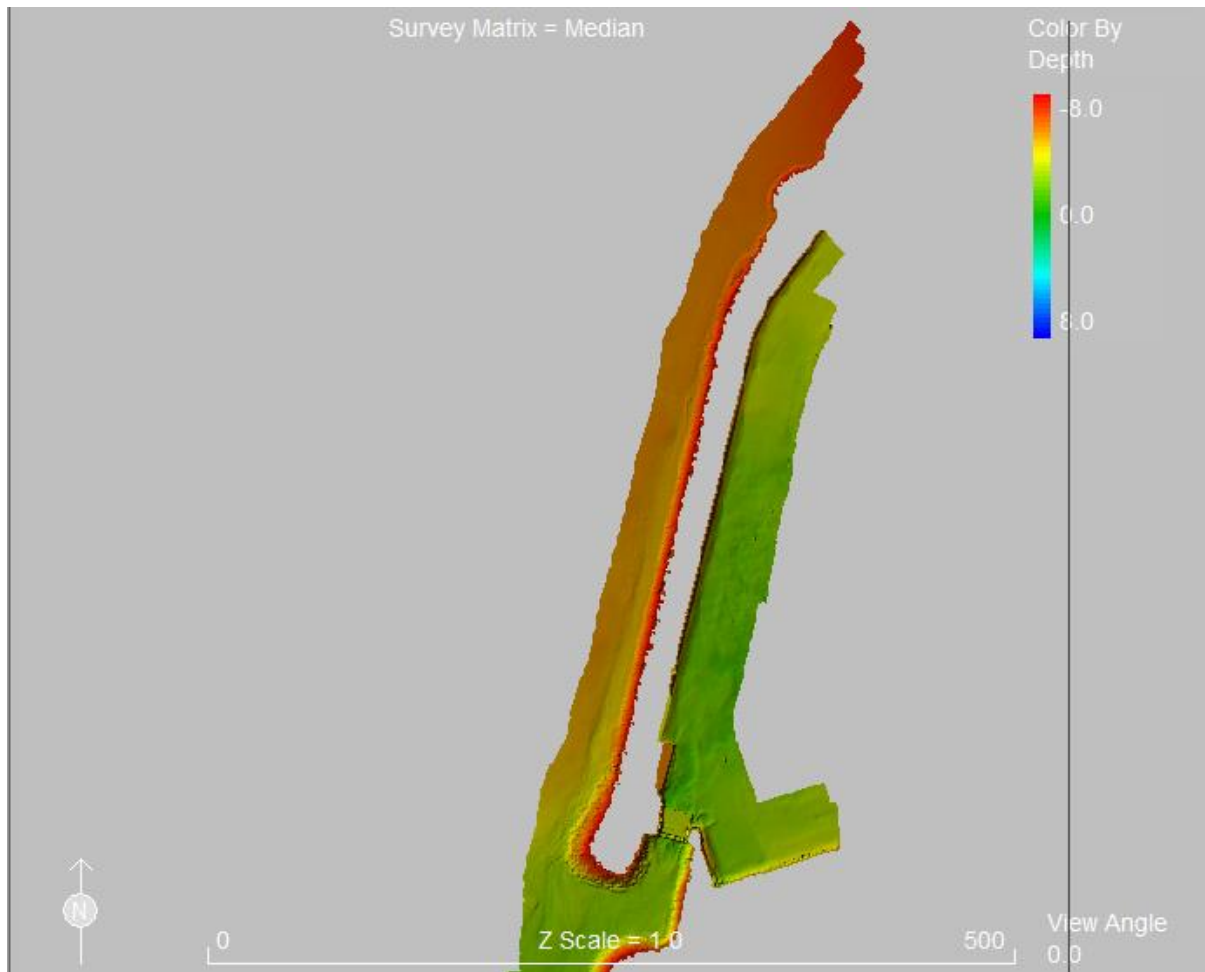


Figure 14 The west wall of Elizabeth Marina

- Note Elizabeth Marina has not been adjusted to reflect pond level.