



St Helier small roads Mooring consultation

Ports of Jersey are proposing to install two moorings at the locations shown below in Figure 1. The moorings will provide additional capacity for layby of commercial vessels and may be used for other purposes as required.

The two buoys will be installed to moor one vessel with two points of anchor, fore and aft. This will ensure the vessels do not swing and impede the Port approaches. An initial navigational risk assessment supports this additional provision. Each buoy will be lit and marked on the Admiralty charts. St Helier VTS will manage the use of the moorings and stipulate several requirements vessels must adhere to when using the mooring, such as transmitting an AIS Position. The mooring locations have been chosen with adequate clearance from existing fish storage boxes.

Comment is sought from those who navigate in the vicinity of the St Helier small roads to assist in final assessment and decision-making. A review of the comments will be undertaken by a Navigation Advisory Panel prior to any changes and a full review of comments made during this consultation will be published on the Ports of Jersey website.

Comments are to be directed to Philip Le Neveu, the Ports of Jersey Marine Quality Manager using e-mail Philip.LeNeveu@ports.je.

This consultation will close on 4th March 2022.

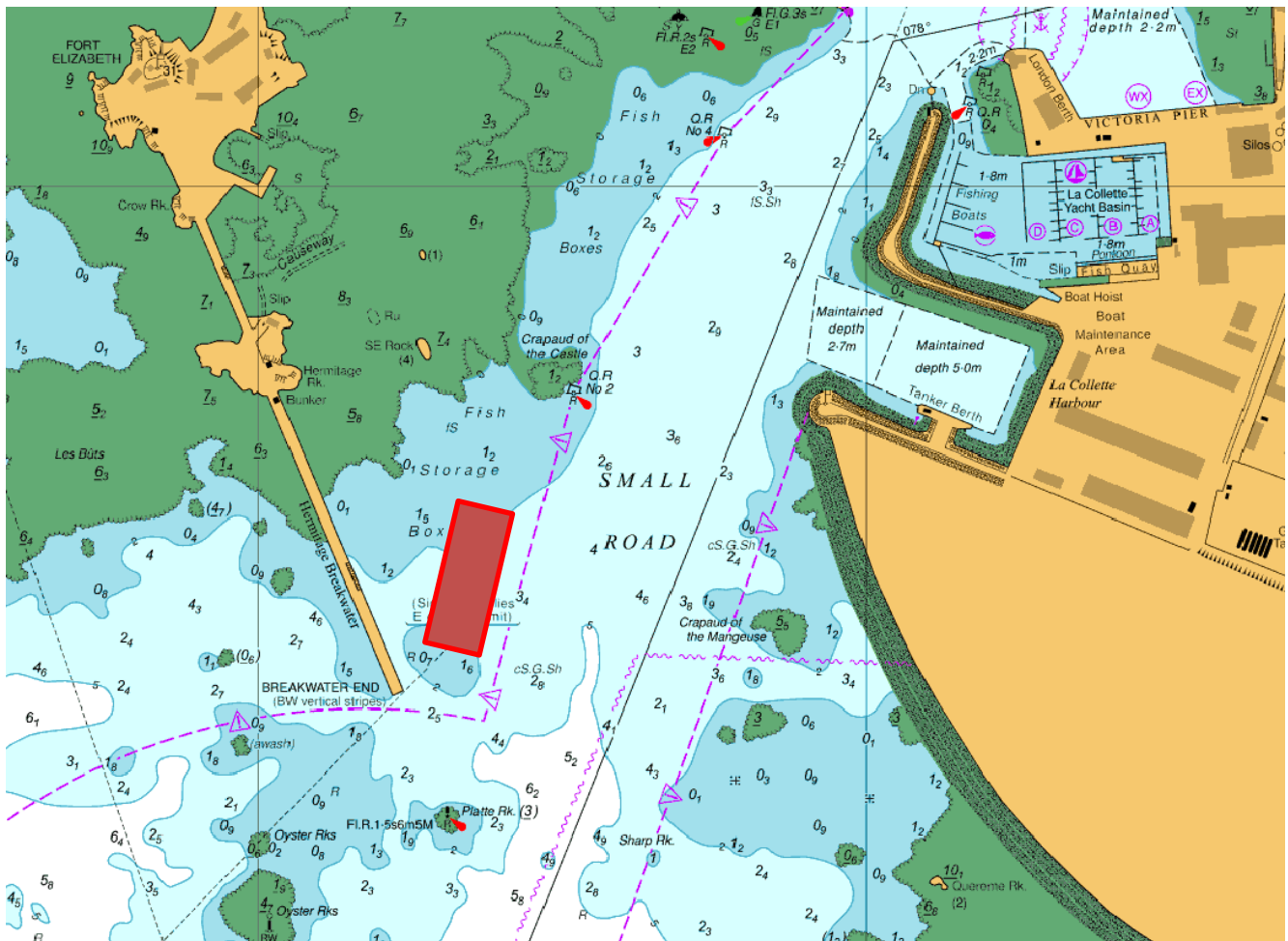


Figure 1 Proposed mooring location shown in red

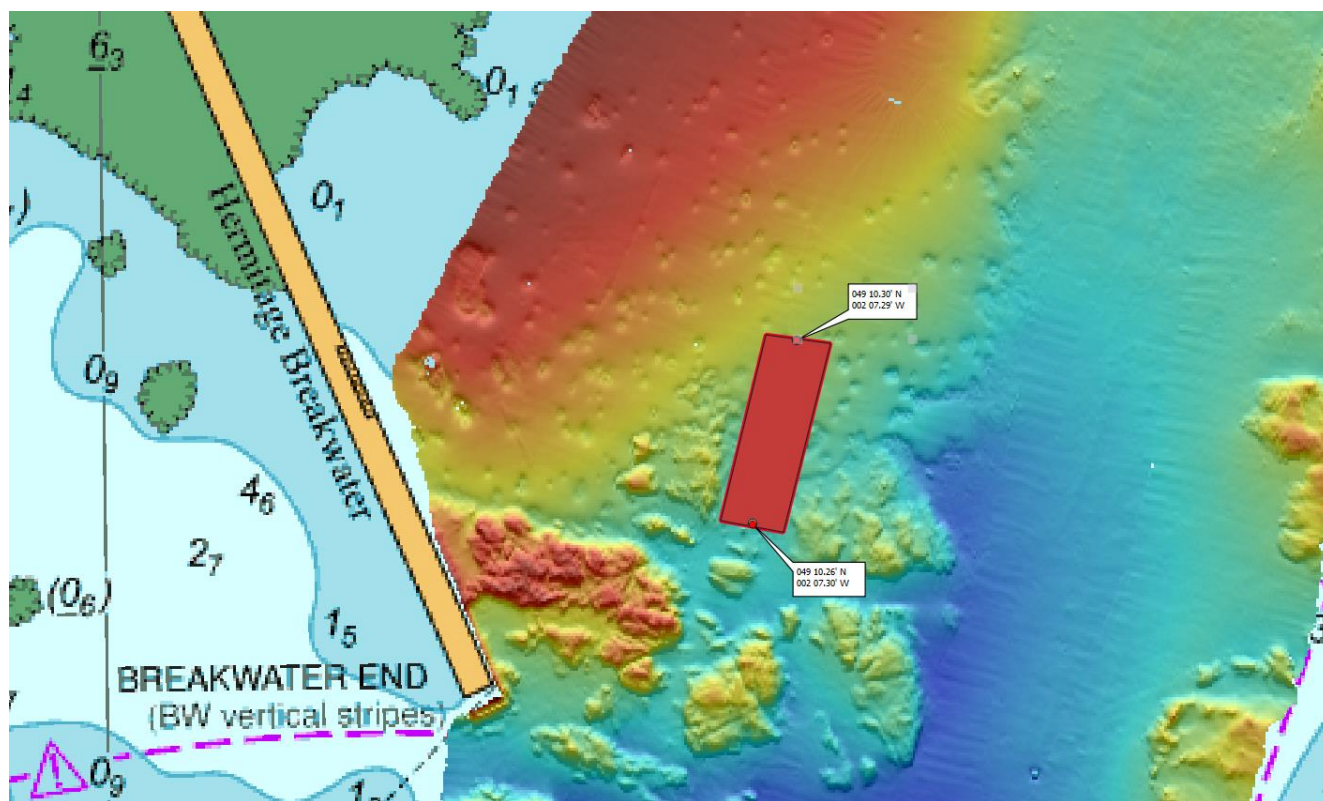


Figure 2 Mooring location with bathymetry data overlay

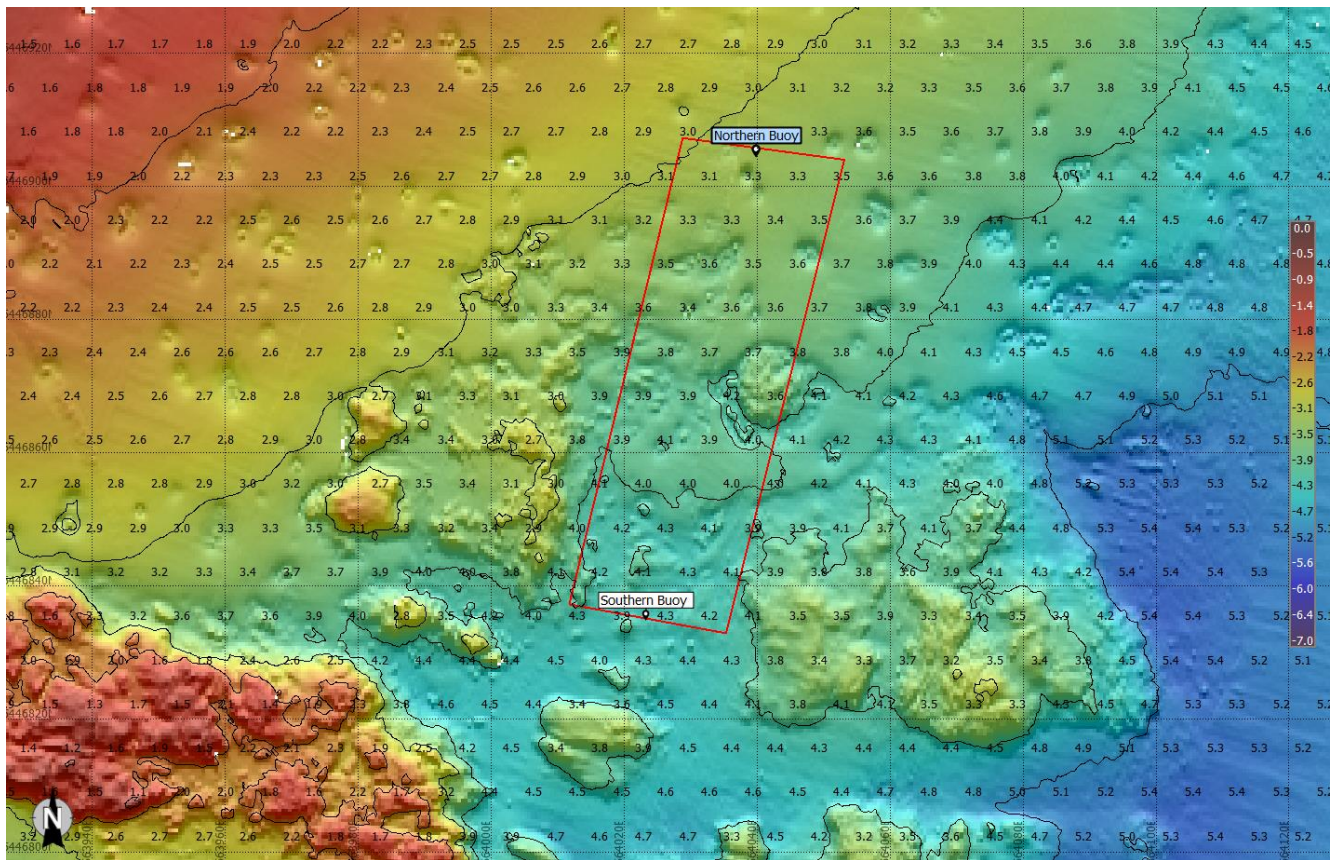


Figure 3 Mooring location Bathymetry and soundings

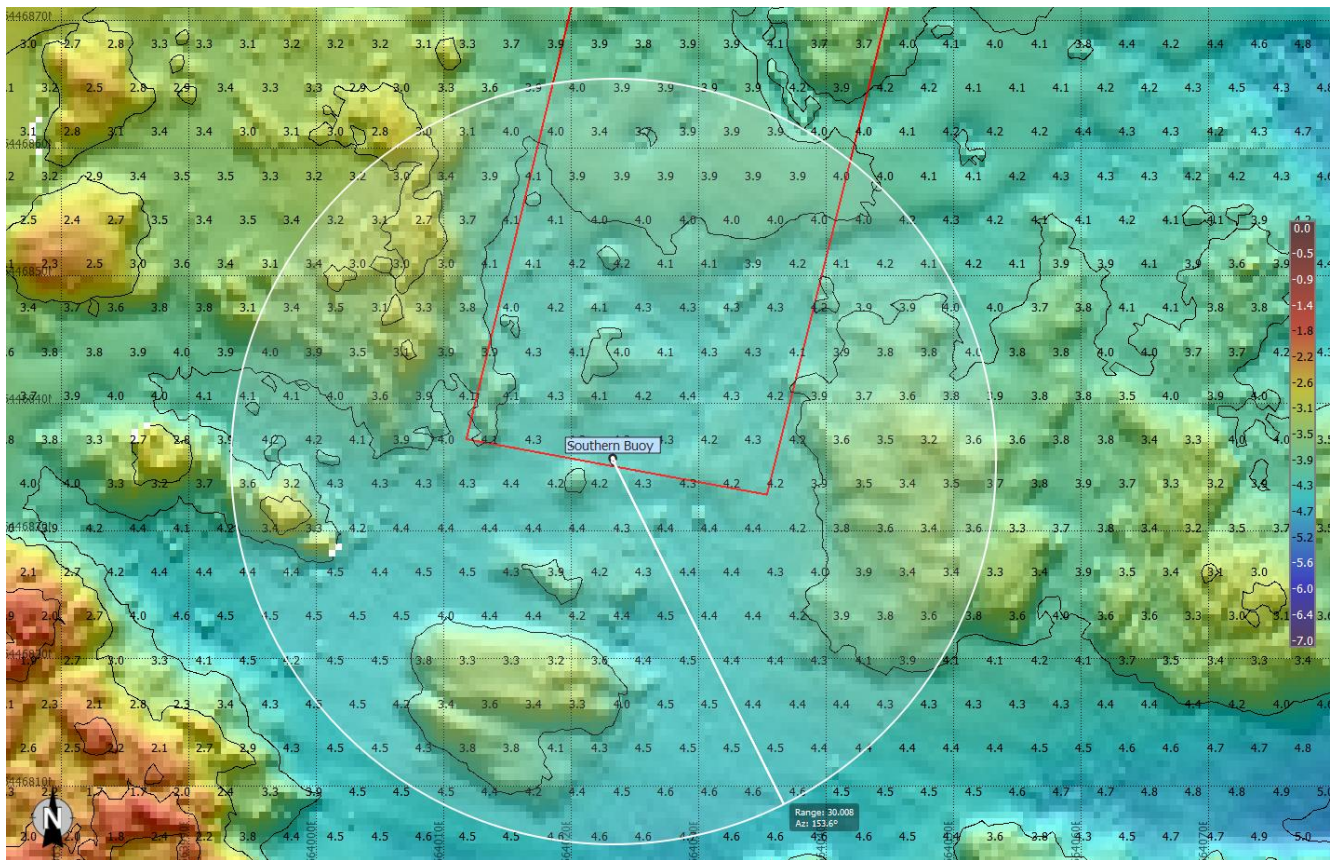


Figure 4 Southern Buoy with 30m radius

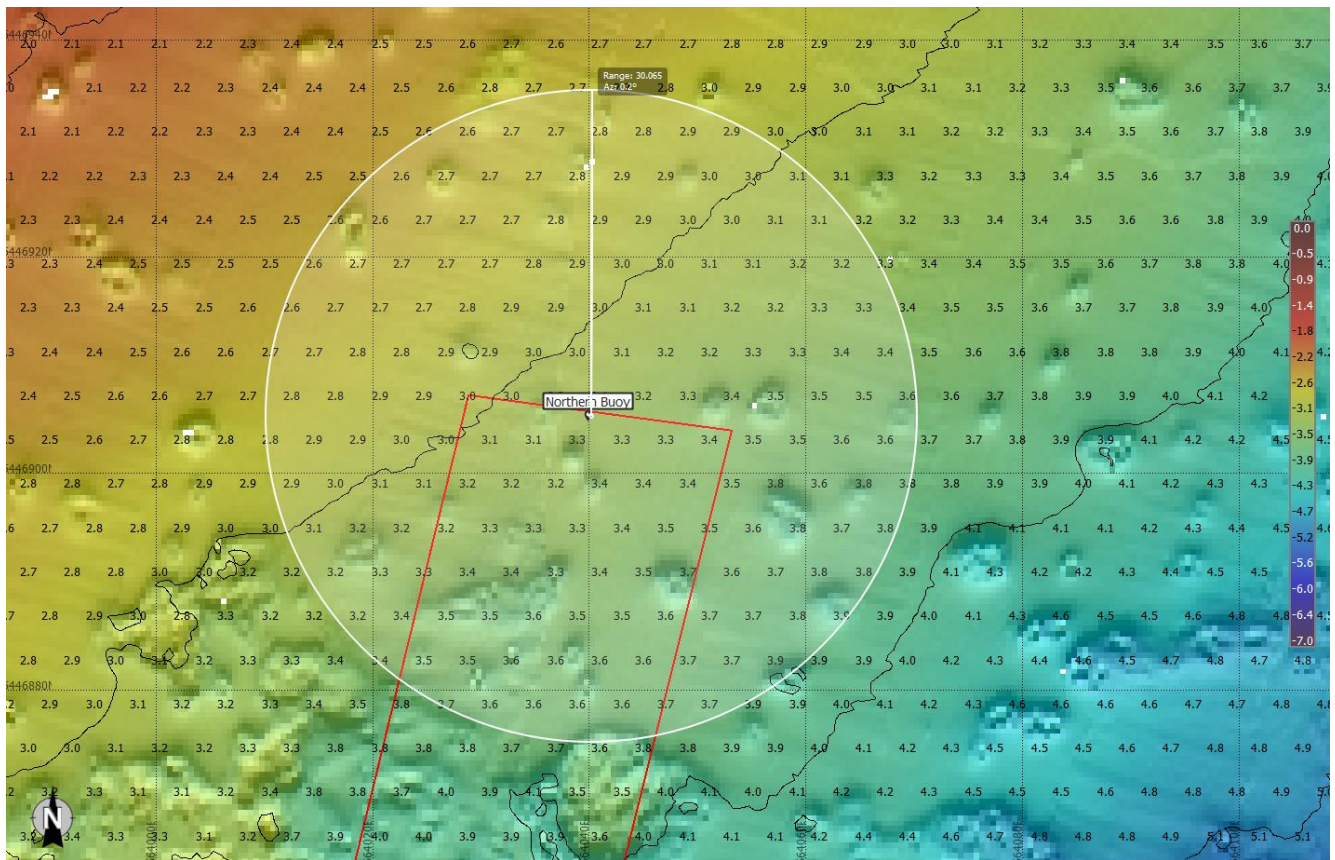


Figure 5 Northern Buoy with 30m radius

Table 1 Planned positions for mooring blocks

	Lat	Lon
Northern Buoy	049° 10.30' N	002° 07.29' W
Southern Buoy	049° 10.26' N	002° 07.30' W

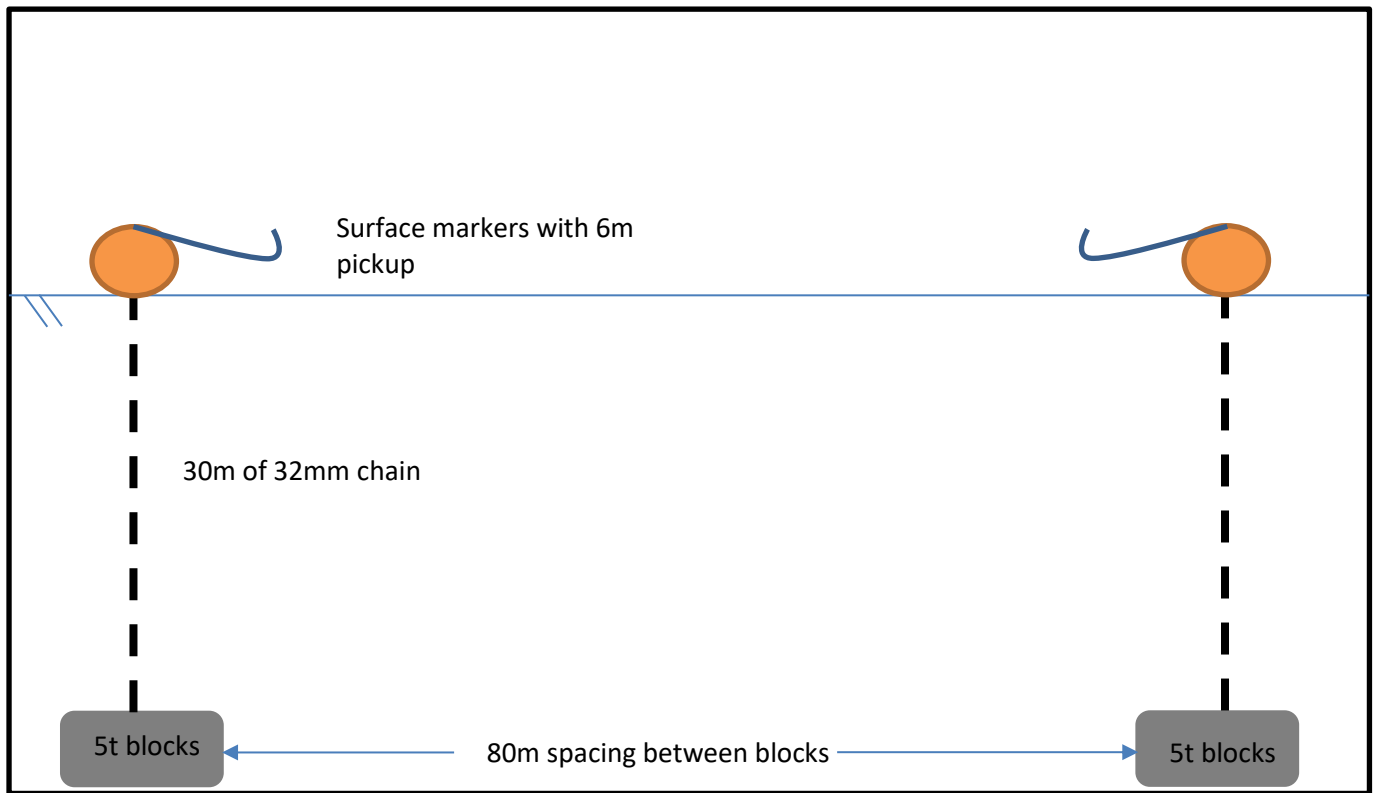


Figure 6 diagram of mooring configuration