



Ports of Jersey Planet and People Plan



Join our journey.

How we will lead and inspire a sustainable future for Jersey, together.



PORTS OF JERSEY
YOUR ISLAND GATEWAY



Connectivity is critical to life in Jersey.

Connectivity is critical to life in Jersey.

As islanders, our quality of life depends on connectivity, whether to visit friends and relatives, to access specialist medical care and education, or to travel on holiday.

Our economy is built on our transport links. Our lifeline freight connections bring the food we eat, the clothes we wear and the materials with which we build, furnish and heat our homes.

But we know that while we need our links, and couldn't live without them, they also have an environmental impact on our island and our planet.

For anyone in the travel industry, a conversation about climate change is never going to be an easy one. Climate change, along with biodiversity loss and social inequality, are the most important battles of our time and every airport and harbour has a hugely important role to play.

Ports of Jersey exists to serve our community and the economy that supports it. We have a responsibility to the environment, to our community, to our customers, to our partners and to our employees. We believe that the best way we can help build the future that the island deserves is by taking a leading role in developing a sustainable future for our island and tackling the challenges this brings head on.

We take our role very seriously. It is not just about what we do, but the difference we can make together. So, when it comes to sustainability, our ambitions go much further than just offsetting the emissions that the links to Jersey create.

We have created a comprehensive strategy of priorities, goals and initiatives that will truly make an impact, to our community, our island and our planet. We want to inspire and lead a sustainable future for Jersey that we can all be proud of. We want our brand to be a symbol of positive change. We want our progress to have a purpose.

Our Planet and People Plan has been created by our people, involving more than 100 employees in an inclusive and inspiring process, and will be owned by our people. It is ambitious and authentic and will define the way in which we at Ports of Jersey interact with the world.



It is our framework for the future for:

- our role in decarbonising island travel and enhancing biodiversity
- the way we undertake construction and champion a sustainable future for our visitor and blue economies
- how we strive to create a sense of belonging, where our teams and partners feel able to be the best versions of themselves
- and the way we push ourselves each day to better serve our community and enhance the lives of islanders

Our sustainability goals are ambitious and rightly so. We understand that the key to our success will be the partnerships we build and the collaboration we can inspire. Together with our community, Government, business, industry, and our partners, we can make the greatest difference.

I could not be more excited by the challenges that lie ahead and the scale of innovation that will be required from us all. So, please get involved, and join us on our journey.

Matt Thomas

Chief Executive Officer
Ports of Jersey

A sustainable future matters to us all.

We need to know that we are caring for our island and our planet, our family, friends and future generations, and for the people and community who make our island the amazing place it is.



The Planet and People Plan sets out what we are going to do, with your help, to secure a bright future for Jersey and make our contribution to the global call for action.

It is important to start taking action now, while also planning for the future, responding to events, new evidence and developing technologies.



Our approach

We want sustainability to be considered in everything we do at Ports of Jersey.

From all that happens on our entire estate, to how we run our business and interact with the businesses we work with. We want to share our priorities, why we think they are important and what we plan to do. Then we will demonstrate our commitment to sustainability through action, measurement, benchmarking and transparency.

We understand we can't achieve our goals alone, so will work with government, our industry partners, our stakeholders, our community and our employees.

It's important we all have a say and join the discussion on what's possible in Jersey. Throughout, we will keep listening to what matters to others and how the views of others can shape our agenda.

Targets and key performance indicators

We will set ambitious but achievable targets and be transparent on our progress.

By using key performance indicators, we will measure our progress, to ensure we are making a real difference and adapt our plans based on evidence if necessary.

Our initiatives are aligned with the United Nations Sustainable Development Goals. There 17 goals are intended as a universal call to action to achieve a better and more sustainable future for all. The framework has been adopted by government bodies around the world. Learn more about United Nations Sustainable Development Goals at www.un.org



It all starts
with a great idea
and teamwork...

Our sustainability journey started as more than 80 ideas of what we could do to make a meaningful difference, after asking our 300 strong team at Ports of Jersey for their suggestions.

From that, a team from across the organisation filtered what would be possible and grouped viable ideas under four key pillars: climate change, biodiversity, waste and circularity, and people.

In workshops involving more than 100 employees, we created overarching, long-term goals for each pillar and looked at what we could do in the short-term and what we would need longer to achieve.

This enabled us to identify initial areas to focus on for 2022 and agree what initiatives we can commit to in 2022 in those areas to start quickly making a positive impact.

OUR FOUR PILLARS

CLIMATE

We will transition to net zero



We will reduce our greenhouse gas emissions
We will partner to grow the renewable energy sector

BIODIVERSITY

We will preserve Jersey's water
and promote thriving biodiversity



We will protect and conserve water
We will deliver biodiversity net gain

WASTE AND CIRCULARITY

We will design out waste



We will eliminate all avoidable waste to incineration
We will ensure infrastructure is sustainable and circular by design

PEOPLE

We will nurture our employees,
support our local community
and encourage sustainable tourism



We will be a trusted brand in Jersey
We will be an employer of choice in Jersey
We will support Jersey to become an eco island



Climate – healthy planet

We know a pivotal part of any sustainability strategy is setting out the steps that we will take to tackle our emissions and how we will work to reduce our carbon footprint. And while we work towards being carbon neutral as a business, we know there are wider industry impacts – and we will also work to reduce those.

With our partners and stakeholders, we want to ensure that we are inspiring and leading in the fight in Jersey against climate change and using our collective strength for shared success.

- We will become net zero, by reducing:
- > our own emissions
 - > our business partners’ emissions
 - > our customers’ emissions
 - > our use of high-emissions energy
 - > while, at the same time, partner to grow the renewable energy sector.



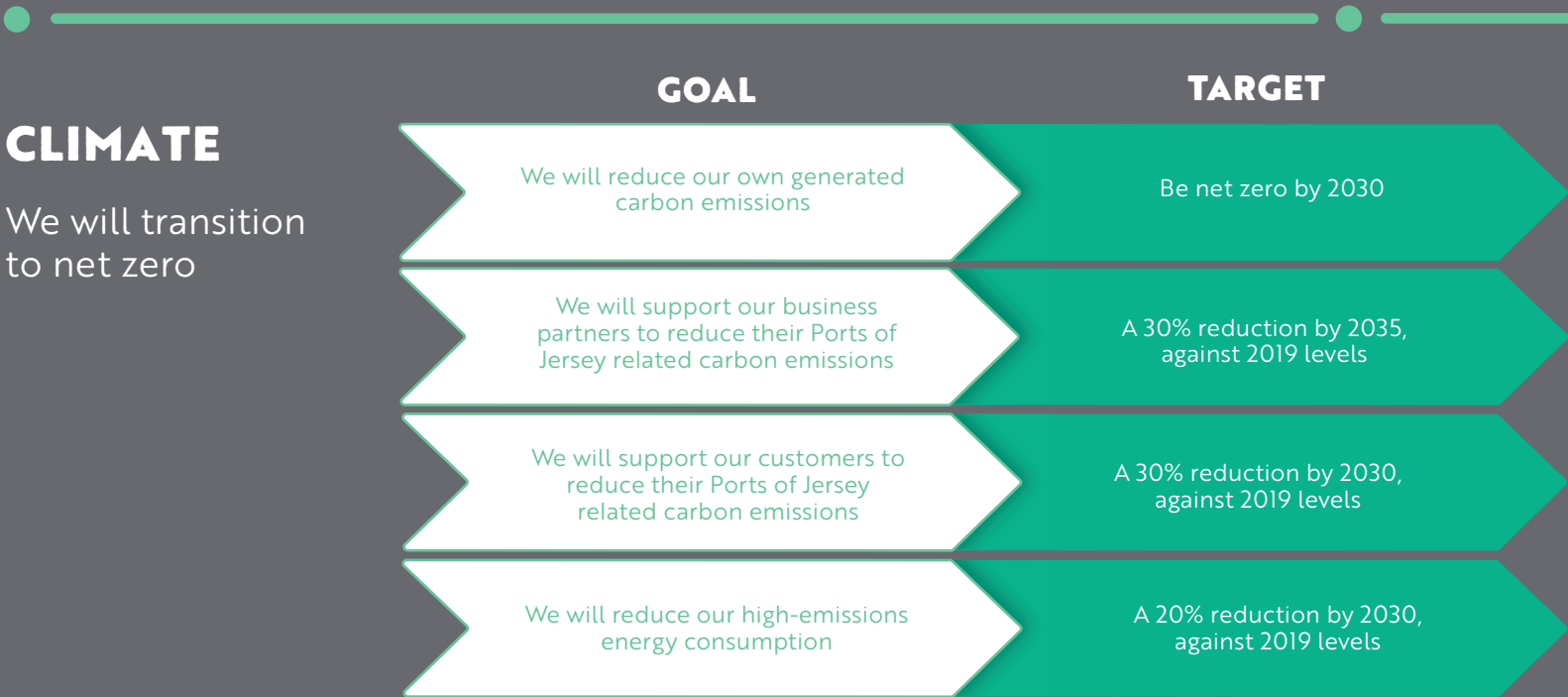
Biodiversity – healthy island

Jersey has an incredible diversity of wild habitats and native species. Its mild climate and geographical position make it a crossroads for wildlife, with plants and animals typical of Continental Europe, coexisting alongside species commonly found in more northerly regions.

At the same time, we share Jersey’s marine and coastal waters with a large variety of marine wildlife. Species

include bottlenose dolphins, grey seals, brent geese, puffins and many more.

But Jersey’s natural environment is under threat. Habitat loss poses arguably the greatest risk to the world’s biodiversity, and we will play our part in protecting and restoring our local natural habitats on which our wildlife depends.





Waste and circularity – waste not, want not

Modern life generates waste. But a load of rubbish is more than a load of rubbish. The more waste we produce, the more we have to dispose, either by recycling and re-using, landfill or incineration.

Sustainable waste management encourages the generation of less waste, reusing more of what we can, and recycling and recovery of waste that is produced.

And at the same time, we want to consider circularity. This simple concept means that a product has an end life often

longer than its initial use. With a circular approach, any product goes back into the supply chain instead of the landfill whenever possible. The motto of the circularity movement, in a nutshell: Waste not, want not.

We need to ensure that we use natural resources at a rate that the Earth can renew them. So that we conserve valuable resources and energy and minimise the impact upon the environment. It's the only way to ensure that we meet the needs of both present and future generations.



People – thriving people and community

Our power, as an organisation and an island, is our people. We want to nurture our employees, support our local community and economy, and do our bit to encourage sustainable tourism.

For our people in the organisation
We are rightly proud of our incredible employees. And we want to do more to support their wellbeing, through understanding their needs and creating programmes and a culture that fosters high levels of physical and mental health. At the same time, we will continue to work to be an inclusive workplace where everyone feels valued and respected, and every employee can be themselves and reach their potential.

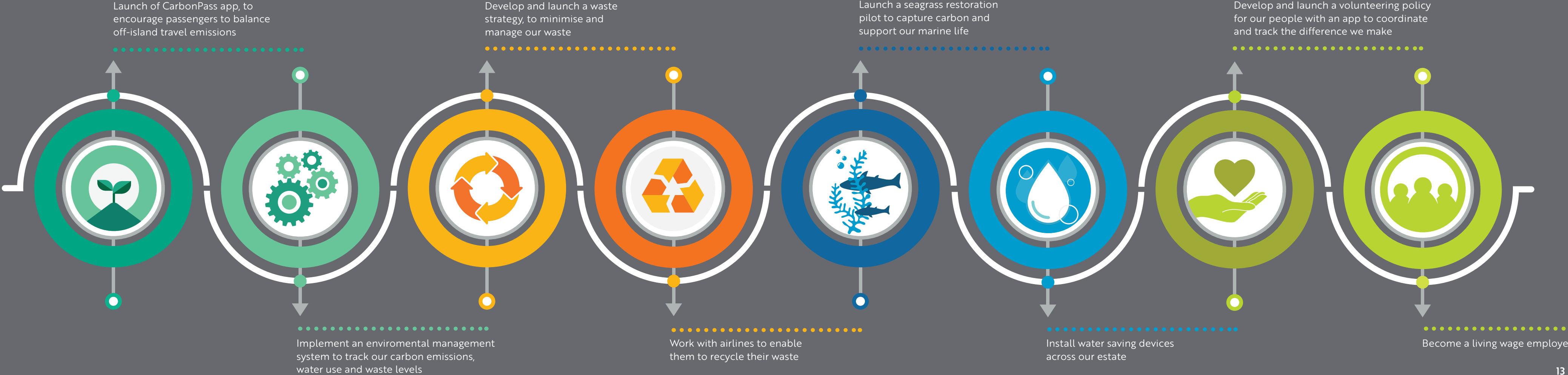
Our island
We have a long history of making a positive social impact. We are at the heart of island life, connecting Jersey to the outside world and enabling islanders to access all they need for a high quality of everyday life through our freight links.

However, we want to do more. We want to be a force for good in the community that we serve. And help Jersey keep innovating in sustainable ways. The sustainability imperative is the greatest entrepreneurial opportunity for a generation.



Highlights of our 2022 deliverables

In 2022, we will commit to initiatives that set us on our journey to achieve our overarching goals. To highlight a few, we will:



Our people and our partners

Why should you get involved?
How can you make a difference as part of a co-ordinated strategy?

Sustainability means different things to different people.
We asked some of our people and partners what motivates
and excites them to be a part of our plan.



Rob Veron
BLUE ISLANDS, CEO

As Jersey's regional airline, we share the same sustainability values as our partners Ports of Jersey and the Government of Jersey. With our heart in the Channel Islands, we're excited to partner with Durrell's Rewild Carbon programme to balance our carbon impacts so that every Blue Islands flight is carbon neutral.



Dr Leslie Dickie
DURRELL, CEO

We are delighted to have partnered with Ports of Jersey so that everyone travelling to and from Jersey can make their journey as sustainable as possible. Via the Ports of Jersey CarbonPass app passengers can balance the carbon emissions of their flight or ferry journey by investing in Rewild Carbon, which plants tree corridors to recover the lush and vibrant Atlantic Rainforest in Brazil.



Helier Smith
JERSEY WATER, CEO

At Jersey Water we are committed to working together with the Government, private sector and third sector stakeholders to deliver positive sustainable change for our Island community and future generations.



Maddy Jouanny
JPRESTAURANTS
HEAD OF CUSTOMER EXPERIENCE
AND MARKETING

At JPRestaurants we love Jersey! Protecting our beautiful Island's environment is extremely important to us, and we think about our planet, sustainability, and ethics in everything we do. We know that there's always more we could be doing, but we think that lots of small steps can make a big difference."



Tom Noel
JT, DIRECTOR OF CORPORATE
AFFAIRS AND SUSTAINABILITY

I believe that sustainability is an area where we must collaborate and work together and it's only by doing this that we will achieve our goals and support the Government in their ambitious targets. I would like to congratulate Ports of Jersey on the release of their strategy and I very much look forward to working with them over the coming years - together, we can make a real difference.



Michelle Ryan,
TRUE.ESG, DIRECTOR

Ports of Jersey touches the lives of every person in Jersey, so it's our pleasure to work with them and other passionate colleagues on their ambitious and comprehensive sustainability strategy. We're so lucky to benefit from substantial natural capital on our beautiful island and we're determined to help preserve that for our children and future generations.



Peter Cadiou
JEC, DIRECTOR OF COMMERCIAL
SERVICES

We have worked with Ports of Jersey on several such projects in recent years and applaud their decision on committing to such a long-term, wide-ranging sustainability and emissions-reduction programme, and we look forward to working in partnership on many of its initiatives, including delivering more on-Island solar PV renewable power.



Zach Denholm
FUSION, CARBONPASS
DEVELOPER

CarbonPass combines two things that we're really passionate about; sustainability and technology! By developing it, we've created a tool that supports both Ports of Jersey and Durrell's objectives, while allowing the people of Jersey to easily get involved.



Andy Farmer
AIR TRAFFIC ENGINEER (ATSEP)
CARBON FOOTPRINTING

While we wait for the future flight technology to become available, there are small changes we all need to make now. We have a very small carbon budget left before we tip the scales to a point of no return. We need to use that budget wisely.



Barry De Caux
MAINTENANCE ENGINEER
CARGO CENTRE
RECYCLING OF MATERIALS

I've been recycling and re-purposing equipment for more than 30 years, so it's great to see Ports adopting new practices to recycle more too. While it used to be done to save money back in the day, now the sustainability benefits are clear to see.



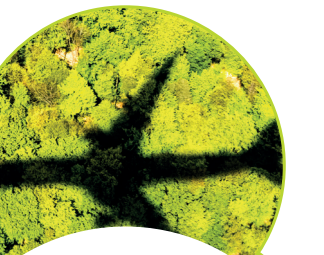
Karen Skelhorn
ESTATE MANAGEMENT OFFICER
SOLAR PROJECT

I'm delighted we're looking into using solar energy. It enables the use of today's free resources to make a brighter future.



Louise Stafford
HARBOURS MANAGER
SEAGRASS PROJECT & ECO PORTS

To quote Gerald Durrell: 'The world is as delicate as a spider's web. If you touch one thread you send shudders running through all the threads.' We have a responsibility to maintain and protect a diverse natural world through being sustainable, respectful and responsible.



Michael Stephens
AIR TRAFFIC CONTROL WATCH
MANAGER
CARBON REDUCTION MEASURES

Sustainable aviation is the future of our industry, and post pandemic is the best opportunity for the industry to build back greener. Ports of Jersey has an important role in sustainable aviation, which will require us to work closely with all of our customers, stakeholders and the community.



Jenny Marek-Murray
DIRECTOR OF CORPORATE
SERVICES AND SUSTAINABILITY

We are so proud of our employees and their passion for sustainability. With the role that we play in Jersey, we truly believe it is our responsibility to take steps now to ensure a greener future for our Island and our planet. Small steps today will add up to make all the difference tomorrow.



For more information, and how you can get involved, visit ports.je/sustainability

Follow us on



Or contact us at sustainability@ports.je