



"DUCHESS" | Shallow Draft Anchor Handling Tug / Utility Vessel

Classification / Flag:

| | |
|--------------------------|--|
| Flag / homeport | UK, Jersey |
| Year of built | 2021 |
| Classification | Bureau Veritas & MCA CAT-0 I X Hull • Mach, Offshore support vessel (Anchor handling), Tug, Unrestr. Nav. • AUT-UMS |
| Class valid up to | 2026 |
| Call sign | MITY4 |
| IMO number / MMSI number | 9928944 / 232034026 |

Dimensions:

| | |
|-------------------------|----------------------------|
| Length O.A. | 27,05 meters |
| Beam / width | 10,50 meters |
| Depth at sides | 4,25 meters |
| Draft (min. – max.) | 2,80 – 3,00 meters |
| Air draft (min. – max.) | 11,30 – 16,60 meters |
| Gross & Net tonnage | 193,07 GT/ NT |
| Clear deck area | 75 m ² |
| Cargo cap. | 2x 1 TEU |
| Cargo deck load | 15 tons per m ² |

Tank capacities / Transfer:

| | |
|-------------------------|-----------------------|
| Fuel oil / gasoil | 140.000 liters |
| Fresh water | 30.000 liters |
| Transfer of gasoil | 30 m ³ /hr |
| Transfer of fresh water | 30 m ³ /hr |

Accommodation:

| | |
|------------|------------------------------------|
| Facilities | Airconditioned 7 bunks (5 crew) |
|------------|------------------------------------|

Navigation & Radio:

Radar, Echo sounder, ECDIS, GSM, AIS, Navtex, Autopilot, SSB/DSC, 2x Compass, SART, Speed log, 4x VHF, 2x Inmarsat-C + GMDSS area A3, GPS, Inmarsat-C, 2x Searchlight 2000W

Machinery / Performances:

| | |
|--------------------------|--|
| Bollard pull | 42,8 tons |
| Max speed | 12,0 knots |
| Main engines | 2x Caterpillar 3512C HD DITA |
| Total output | 2.610 kW = 3.500 BHP |
| Propulsion | Twin fixed propellers in nozzles |
| Diameter propellers | 2,25 meters |
| Bow thruster | 200 BHP, Veth, electrical driven |
| Generator sets | 2x Caterpillar C-4.4 TA, 50Hz |
| Generator power | 2x 107kVA, 86ekW, 230/400V |
| Generator deck equipment | 1x Caterpillar C9.3, 60Hz |
| Generator power | 375kVA, 300ekW, 440V, for Bowthruster & E-hydraulic syst. |

Deck Equipment (running on biodegradable lubricant oil):

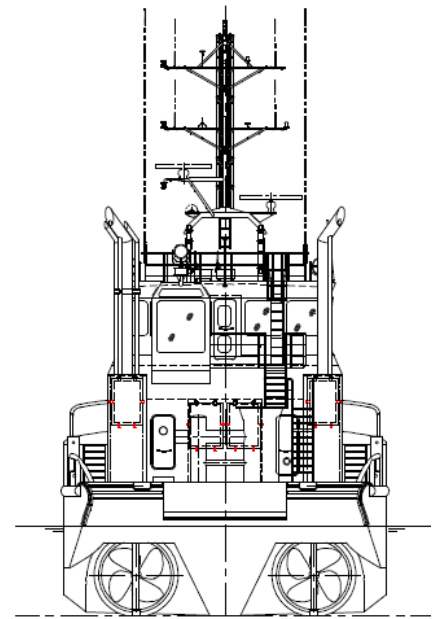
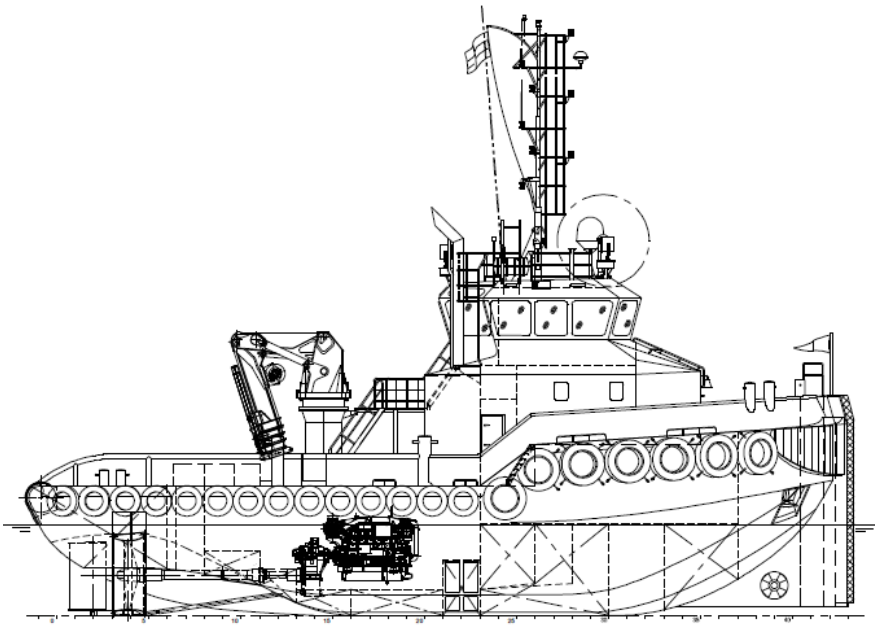
| | |
|----------------------------|---|
| Winch | Kraaijeveld Waterfall Winch |
| Towing drum | Pull Force 60T, Holding F. 135T 650 meters x 44 millimeters |
| Anchor handling drum | Pull Force 100T, Holding F. 135T 300 meters x 44 millimeters |
| Tuggerwinch | Dromec HPV12000, 12 tons(m) |
| Towing pins | DMC, Double pin, SWL 50 ton |
| Chain stopper | DMC, SWL 75 ton |
| Push bow | Double rubber fender suitable for bow landing operations |
| Hydraulic coupling winches | 2x 60 tons for pushing mode |
| Stern roller | 4 mtr x 0,98 mtr, SWL 135t |
| Moonpool | Integrated in push bow |
| Main marine deck crane | HEILA HLRM 140-6S |
| Maximum lift capacity | 5,65 tons(m) at 19,03 meters |
| Crane winch | SWL 5,0 tons with 50 mtr wire |

| | | | | | | | | |
|--|----|-------|-------|-------|-------|-------|-------|-------|
| | KG | 19700 | 14450 | 11350 | 9350 | 7800 | 6550 | 5650 |
| | M | 6,28 | 8,35 | 10,42 | 12,48 | 14,60 | 16,82 | 19,03 |

Optional:

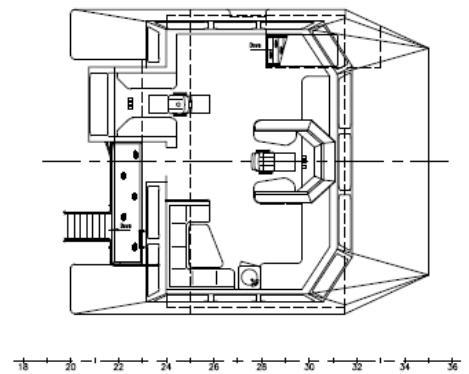
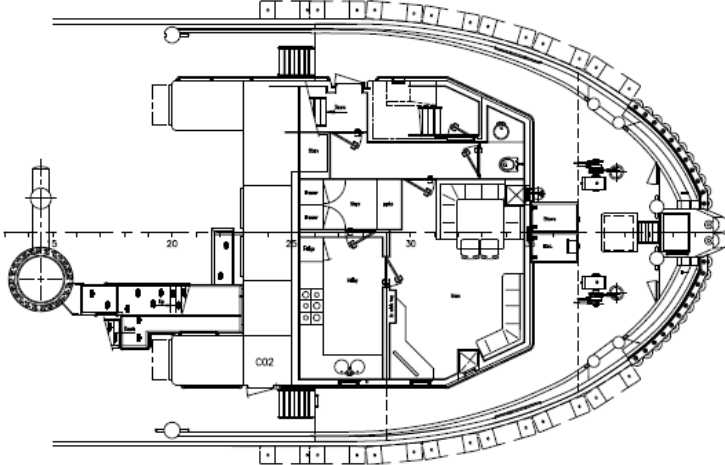
A-Frame, 30 tons SWL

"DUCHESS" | General Arrangement

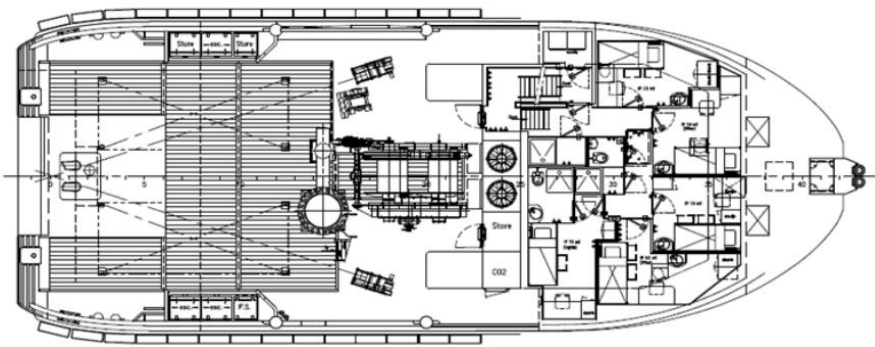


FORECASTLE DECK

BRIDGE DECK



MAIN DECK/TANKTOP



ENGINE ROOM

